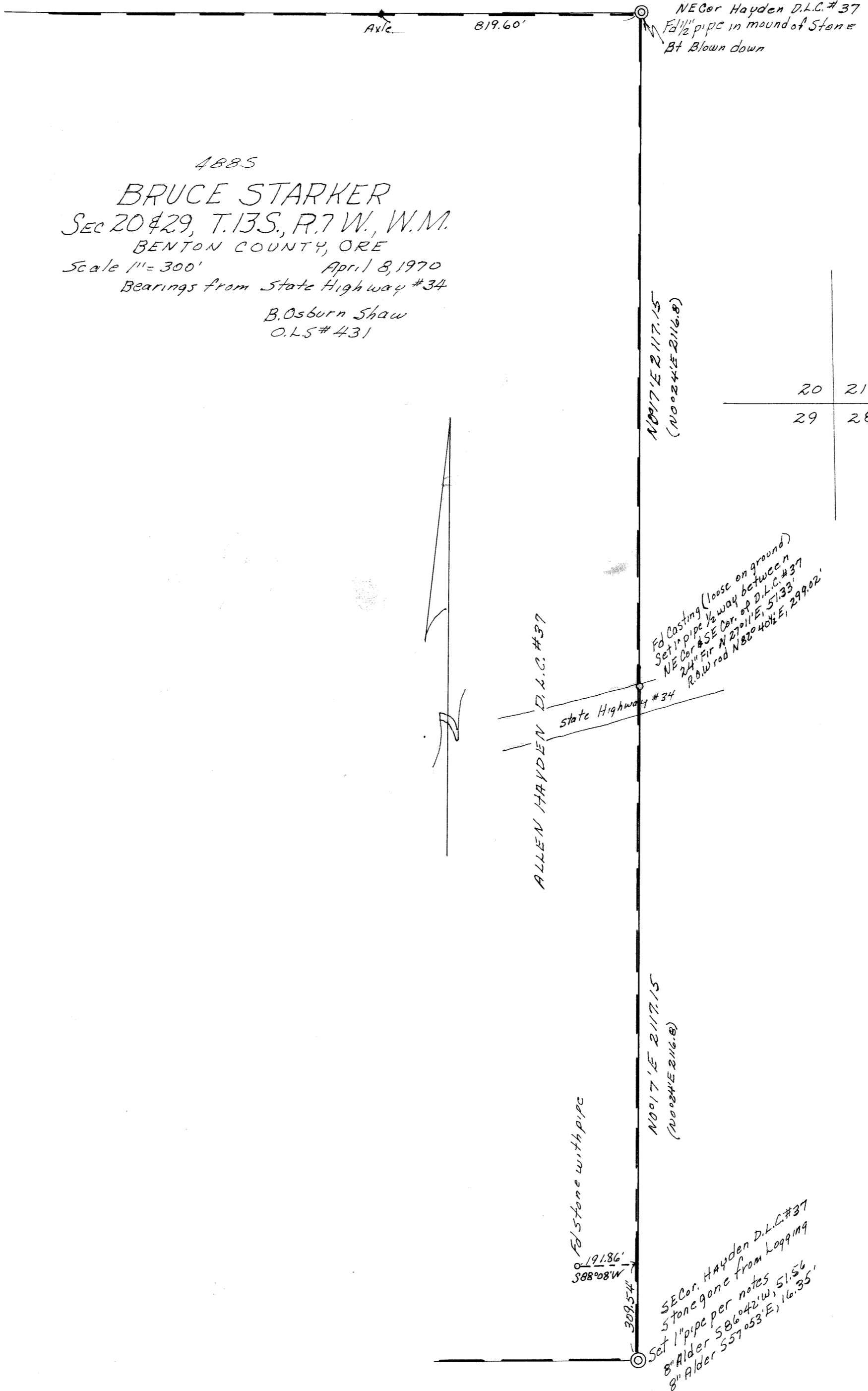


4885

4885

4885  
 BRUCE STARKER  
 SEC 20 & 29, T.13S., R.7W., W.M.  
 BENTON COUNTY, ORE  
 Scale 1" = 300' April 8, 1970  
 Bearings from State Highway #34  
 B. Osburn Shaw  
 O.L.S # 431



NE Cor Hayden D.L.C. # 37  
 Fd 1/2" pipe in mound of Stone  
 Bt Blown down

N 0° 17' E 2117.15'  
 (N 0° 24' E 2116.8)

20	21
29	28

Fd Casting (loose on ground)  
 Set 1" pipe 1/2 way between  
 NE Cor & SE Cor. of D.L.C. # 37  
 2 1/4" Fir N 27° 11' E, 51.33'  
 R.O.W. rod N 82° 40 1/2' E, 299.02'

ALLEN HAYDEN D.L.C. # 37

State Highway # 34

N 0° 17' E 2117.15'  
 (N 0° 24' E 2116.8)

Fd Stone with pipe

191.86'  
 S 88° 08' W

SE Cor. Hayden D.L.C. # 37  
 Stone gone from Log 179  
 Set 1" pipe per notes  
 8" Alder S 86° 42' W, 51.56'  
 8" Alder S 57° 05' E, 16.35'

4885