

SURVEY OF - S1/2 LOT 9, LOTS 10, 11, 12

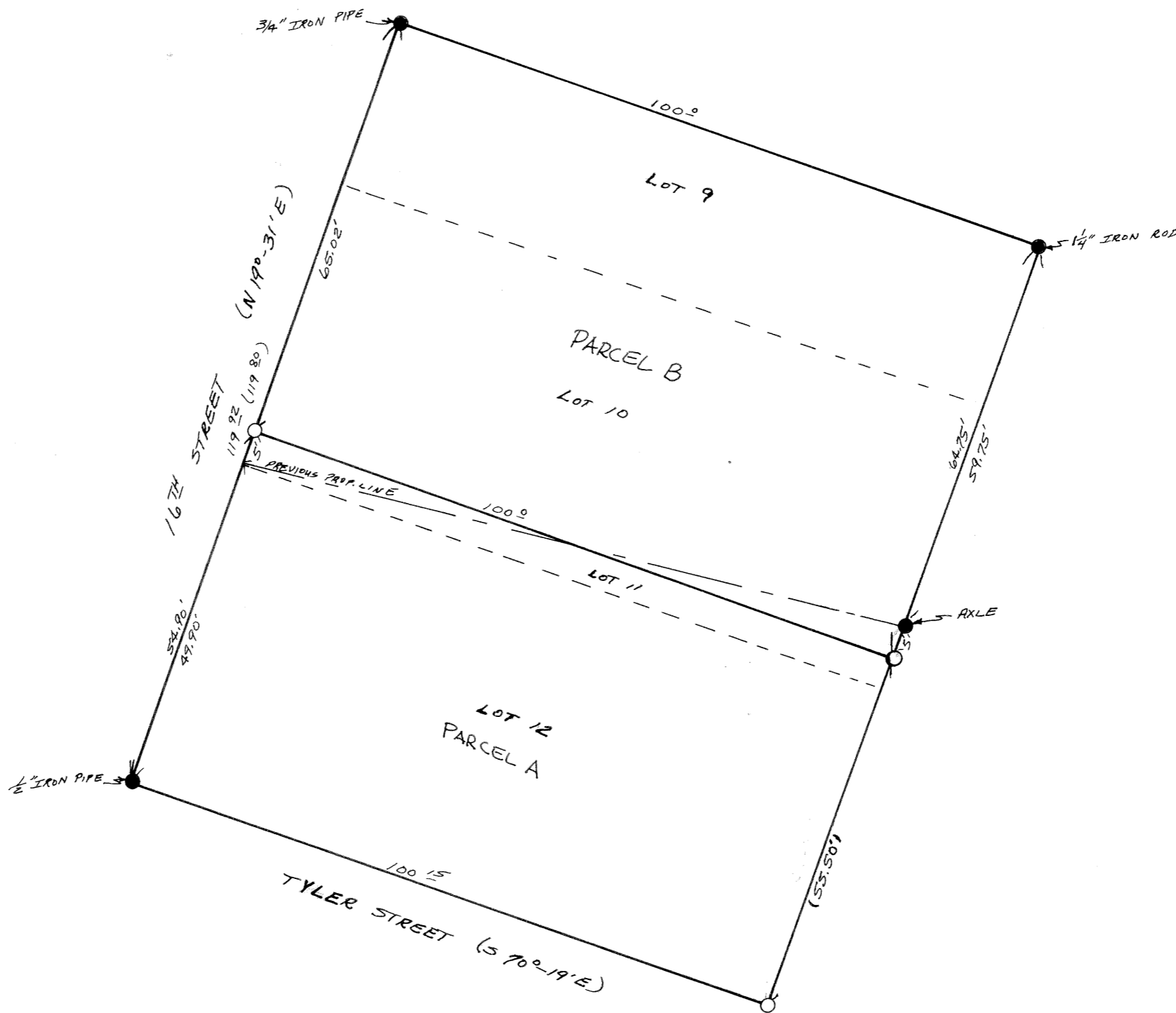
BLOCK 21, WILKINS & JOBS ADDITIONS

SW 1/4 NW 1/4 SECTION 35, T11S, R5W, W.M.

CORVALLIS, BENTON COUNTY, OREGON

SCALE - 1" = 20'

AUGUST 28, 1970



LEGEND

- - CORNERS FOUND
 - - CORNERS SET - 5/8" IRON ROD
- RECORDED INFORMATION IS IN PARENTHESES

REGISTERED
OREGON
LAND SURVEYOR

William R. Rust

JULY 17, 1970
WILLIAM R. RUST
936

McCULLOUGH, BRYANT, & ASSOCIATES
CORVALLIS