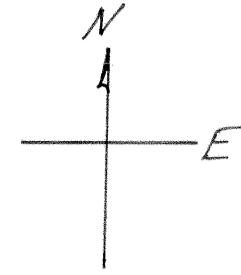


C.S. 4952

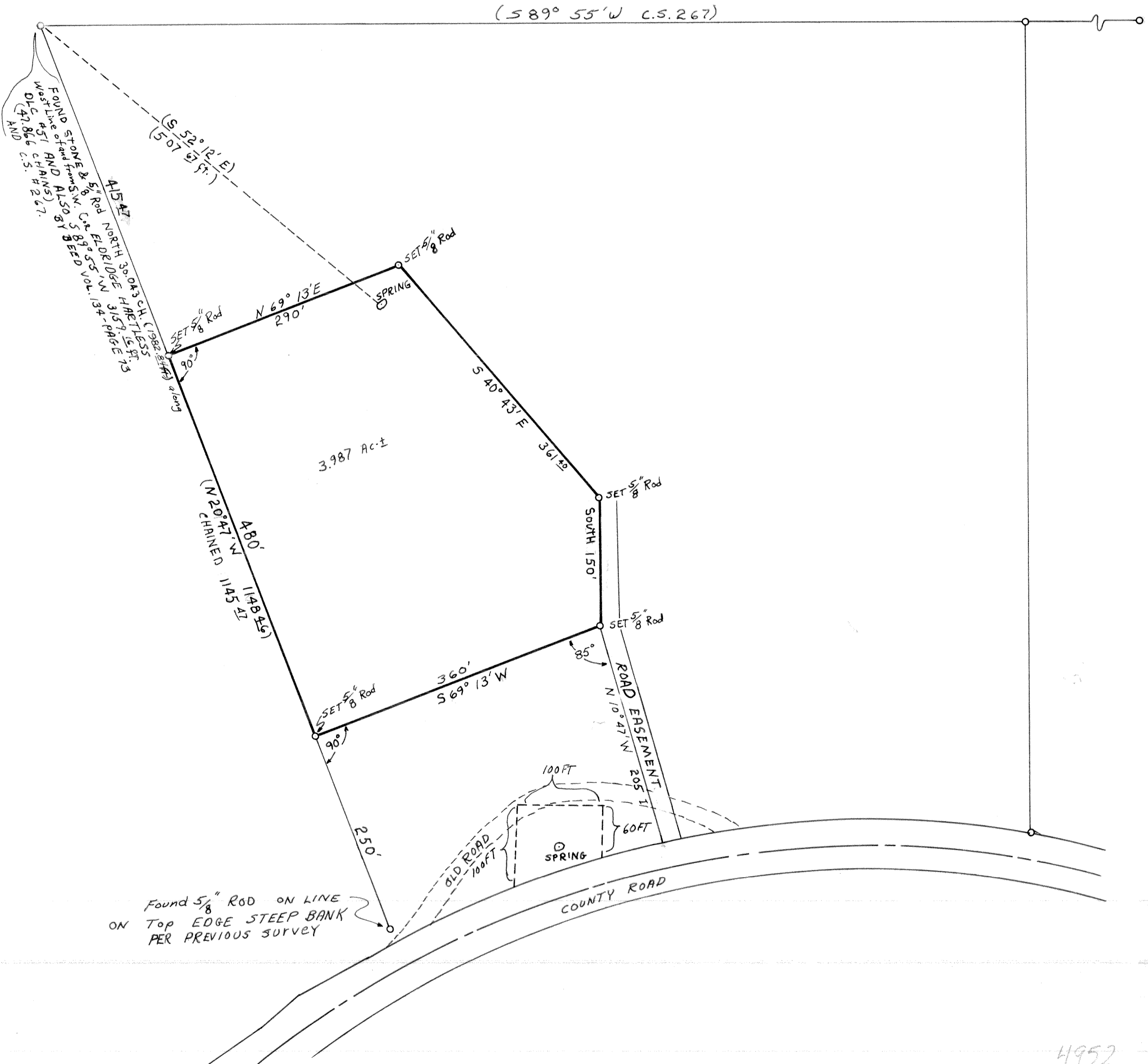
NORTHSIDE LBR. CO.
SEC. 14, T125, R6W, W.M.
BENTON COUNTY, ORE.



SCALE 1" = 100 FT.
BRGS FROM C.S. MADE IN 1964
SEP. 3, 1970

BERT W. UDELL
BY RALPH D. WILKINSON
REG. ENGRS.

Bert W. Udell



4952

4952

4952