

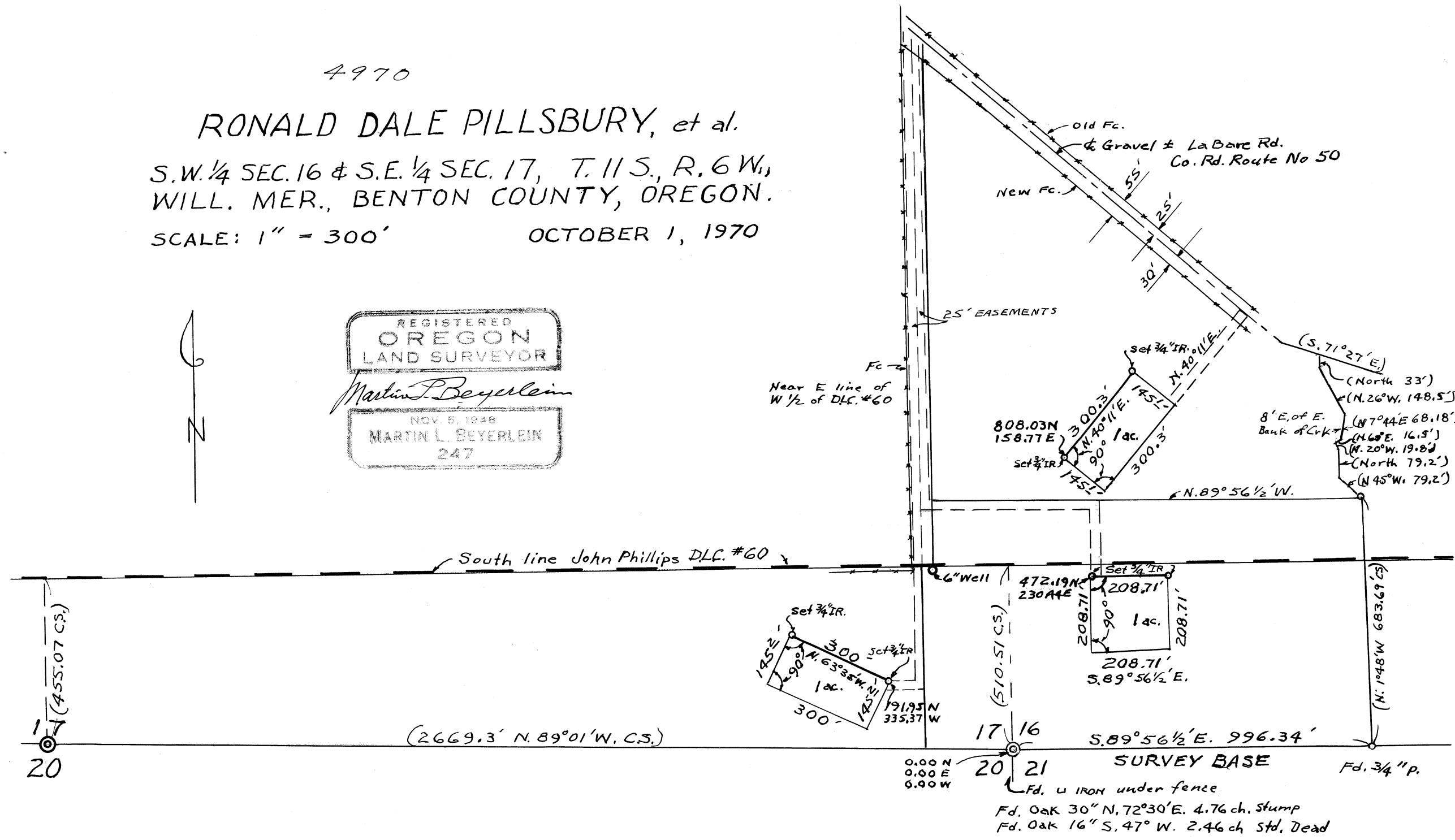
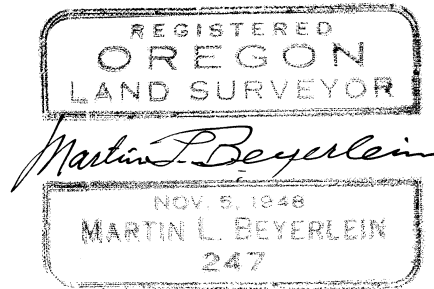
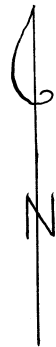
4970

RONALD DALE PILLSBURY, et al.

S.W. 1/4 SEC. 16 & S.E. 1/4 SEC. 17, T. 11 S., R. 6 W.,  
WILL. MER., BENTON COUNTY, OREGON.

SCALE: 1" = 300'

OCTOBER 1, 1970



20

17 16  
20 21

Fd. 3/4" p.  
Fd. U IRON under fence  
Fd. Oak 30" N, 72°30'E. 4.76 ch. Stump  
Fd. Oak 16" S, 47° W. 2.46 ch Std. Dead