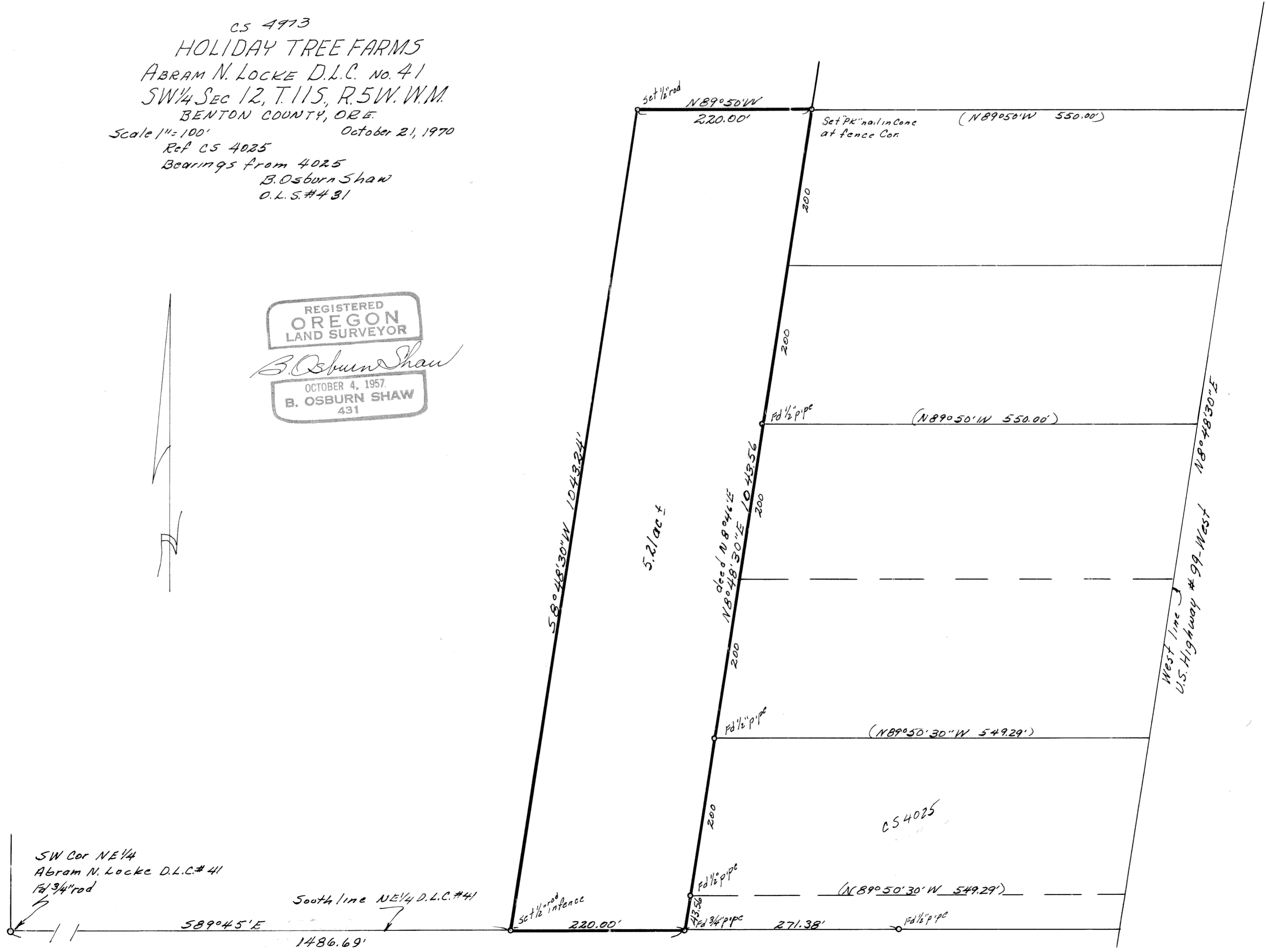


CS 4973
 HOLIDAY TREE FARMS
 ABRAM N. LOCKE D.L.C. No. 41
 SW 1/4 SEC 12, T. 11S, R. 5W. W.M.
 BENTON COUNTY, ORE.
 Scale 1" = 100' October 21, 1970
 Ref CS 4025
 Bearings from 4025
 B. Osburn Shaw
 O.L.S. #431

REGISTERED
 OREGON
 LAND SURVEYOR
B. Osburn Shaw
 OCTOBER 4, 1957
 B. OSBURN SHAW
 431



SW Cor NE 1/4
 Abram N. Locke D.L.C. #41
 1/4 3/4" rod

South line NE 1/4 D.L.C. #41

58°45'E
 1486.69'

Set 1/2" rod in fence
 220.00'

413.56
 1/4 3/4" pipe
 271.38'

(N89°50'30"W 549.29')

CS 4025

West line
 U.S. Highway #99-West
 N8°48'30"E