

C.S. 5025

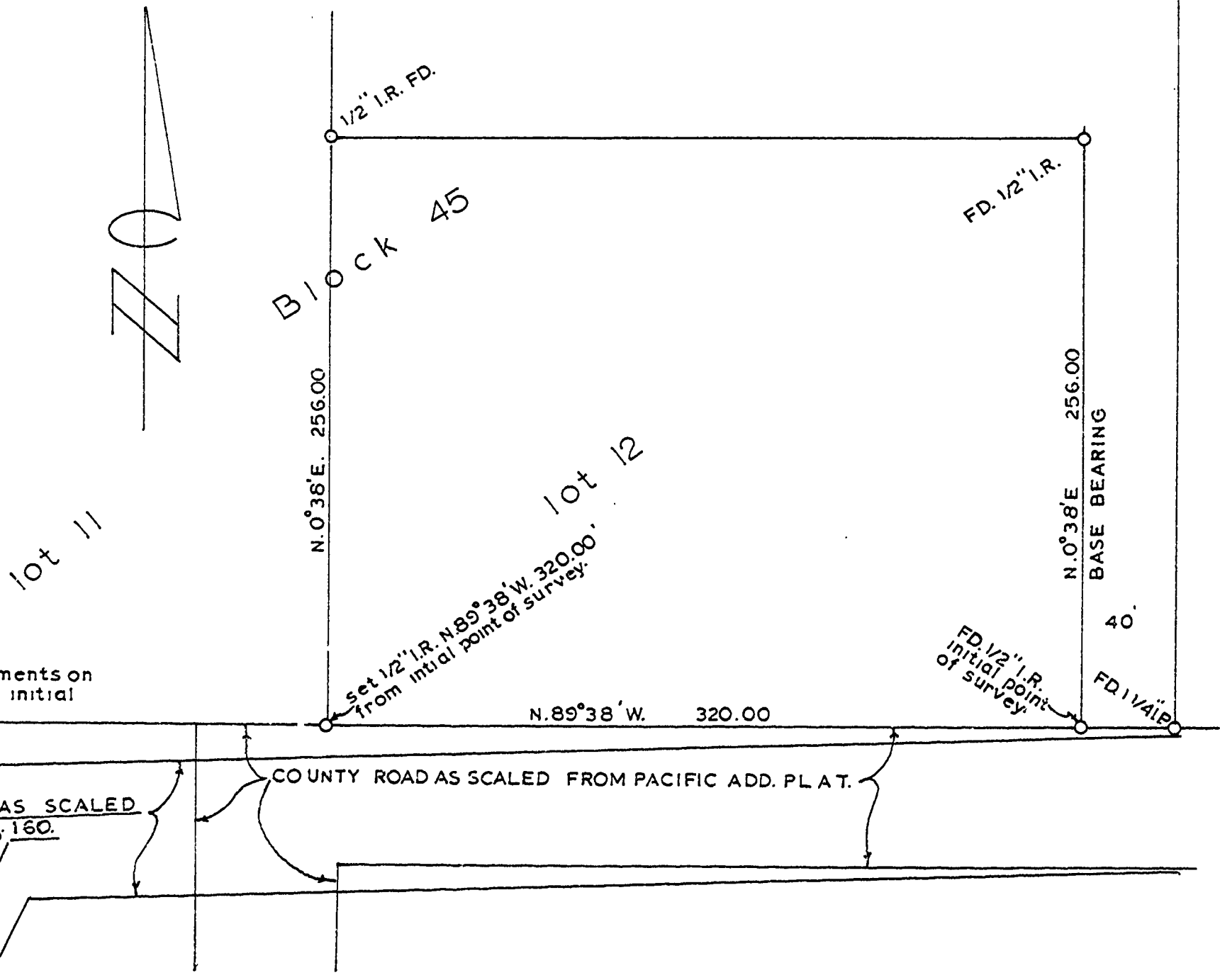
survey for

D. P. BREEDEN

in

PACIFIC ADDITION TO MONROE  
SECTION 33 T.14S., R.5 W.W.M.  
BENTON COUNTY, OREGON

SCALE 1 1/2" = 60' DEC. 8, 1970



No attempt was made to locate any monuments on the south line of Pacific Add. West of the initial point of this survey.