

RECORD OF SURVEY 5078

FOR: WEDGWOOD HOMES OF CORVALLIS INC.

IN: THE S.M. STOUT D.L.C. No. 48

Township 11 South, Range 5 West, W. B. & M.

Benton County, Oregon May, 1971

Scale: 1" = 100'

REGISTERED OREGON LAND SURVEYOR

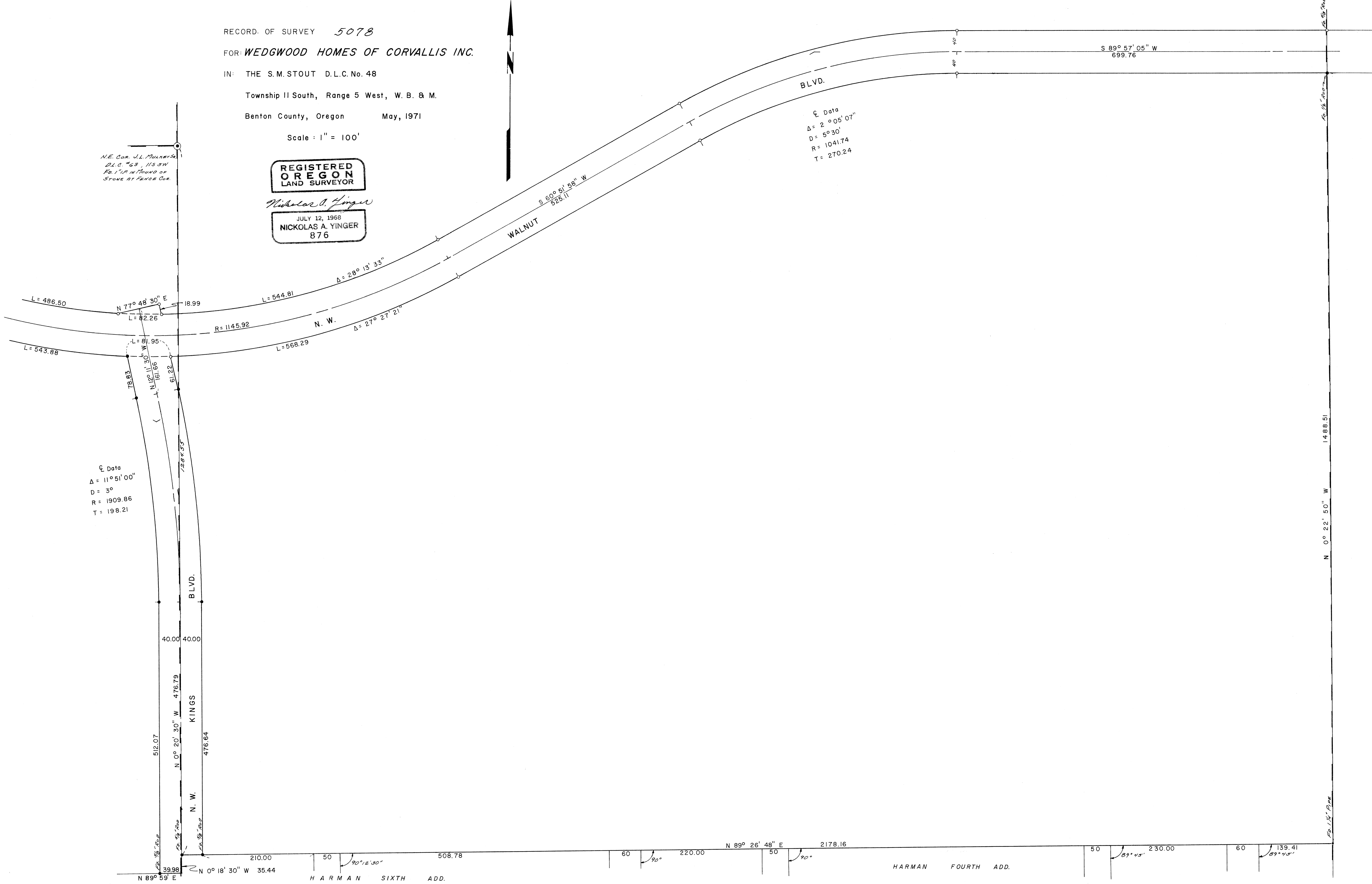
Nickolas A. Yinger

JULY 12, 1968
NICKOLAS A. YINGER
876

N.E. Cor. J.L. Muller's
D.L.C. #63, 115.3' W
F.P. 1" R in Found on
Stone at Favor Cor.

Curve Data
Δ = 2° 05' 07"
D = 5° 30'
R = 1041.74
T = 270.24

Curve Data
Δ = 11° 51' 00"
D = 3°
R = 1909.86
T = 198.21



5078

5078