

C.S. 5087

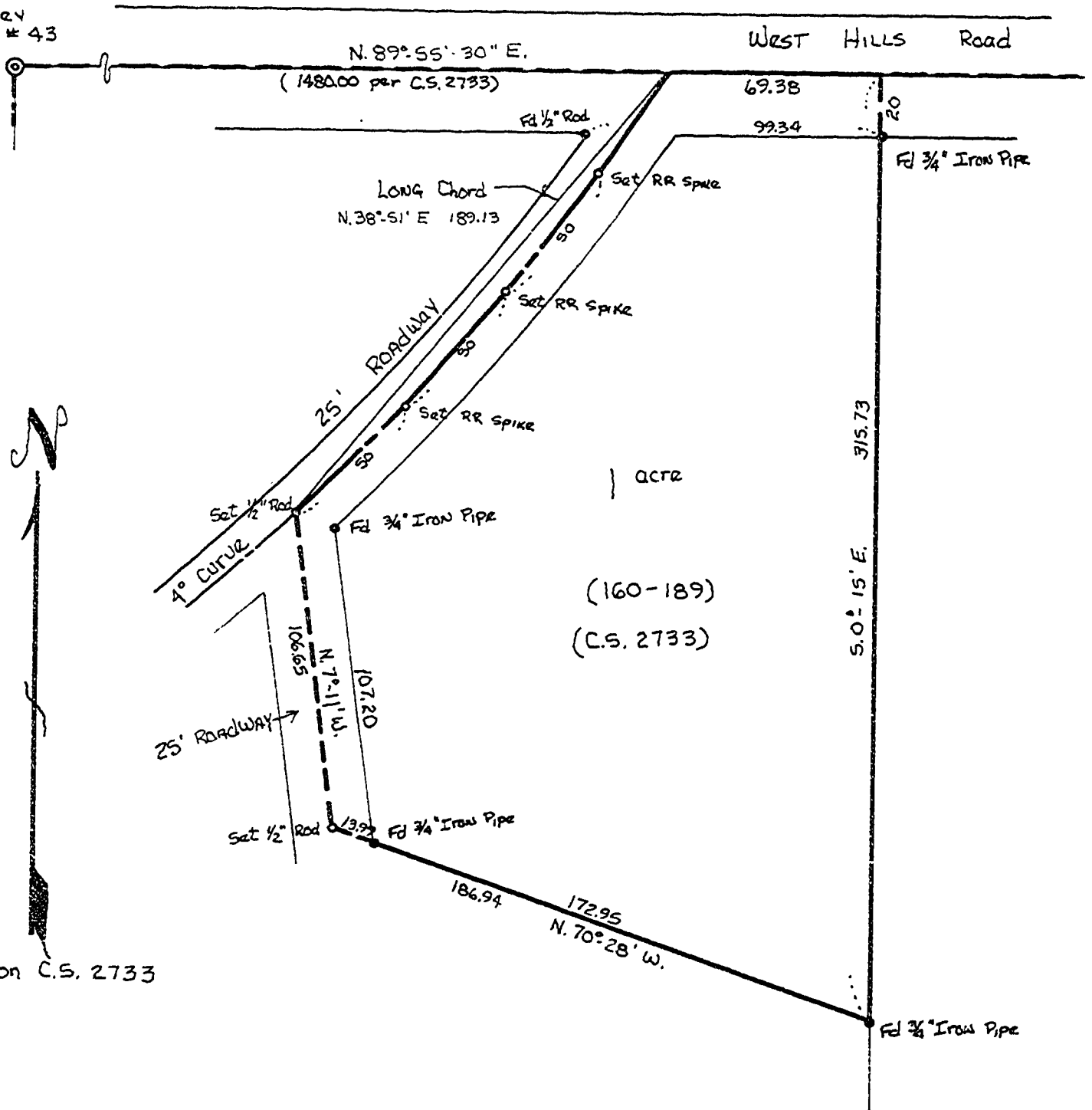
HARRY L. AMMERMAN

NW 1/4 SE 1/4 SECTION 5, T.12 S., R.5 W., W.M.
IN
BENTON COUNTY, OREGON

SCALE: 1" = 50'

8 JUNE 1971

Northwest Corner
A.G. Hovey
D.L.C. # 43



Based on C.S. 2733

REGISTERED
OREGON
LAND SURVEYOR

Kenneth M. Wightman

JULY 17, 1970
KENNETH M. WIGHTMAN II
942