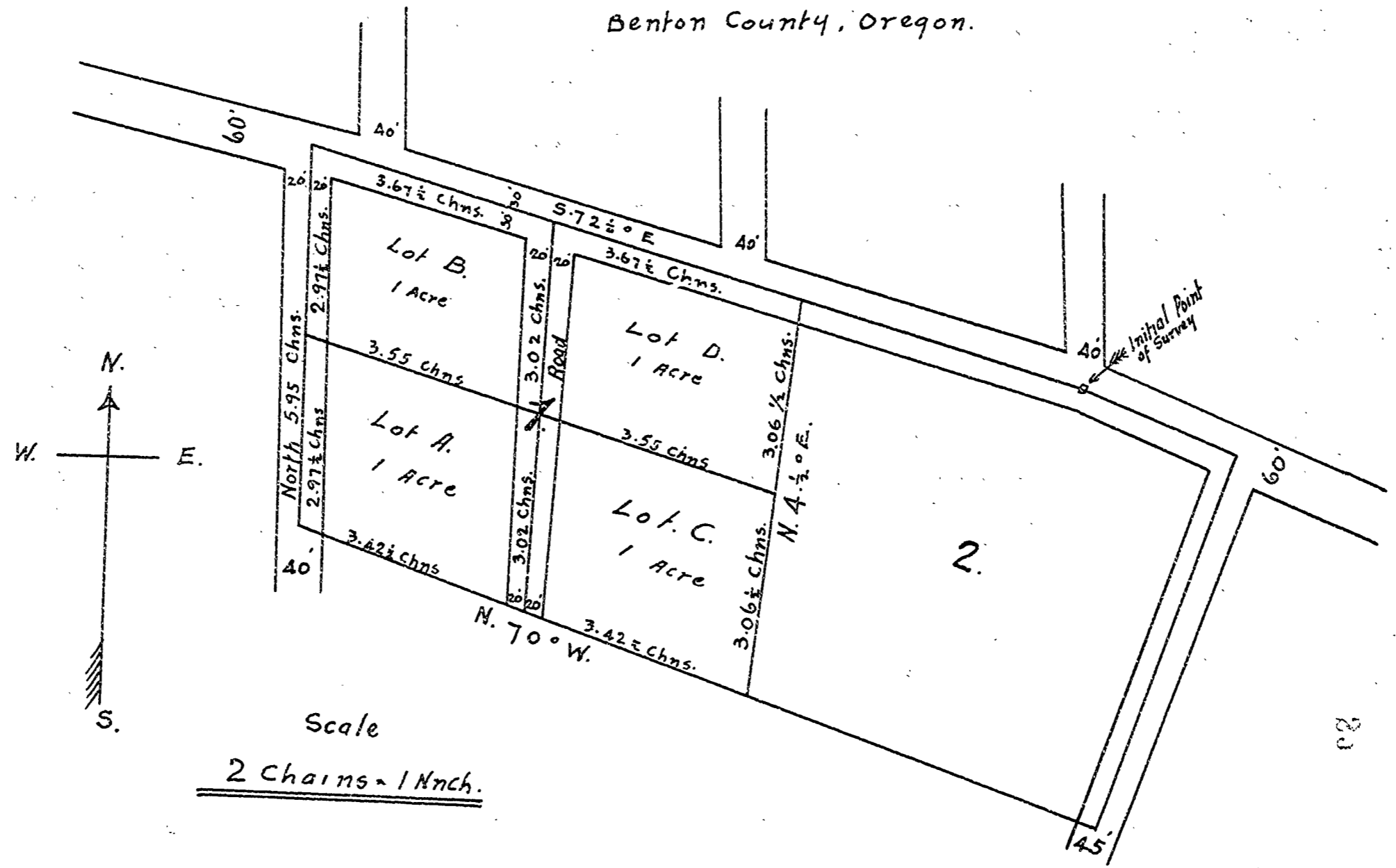
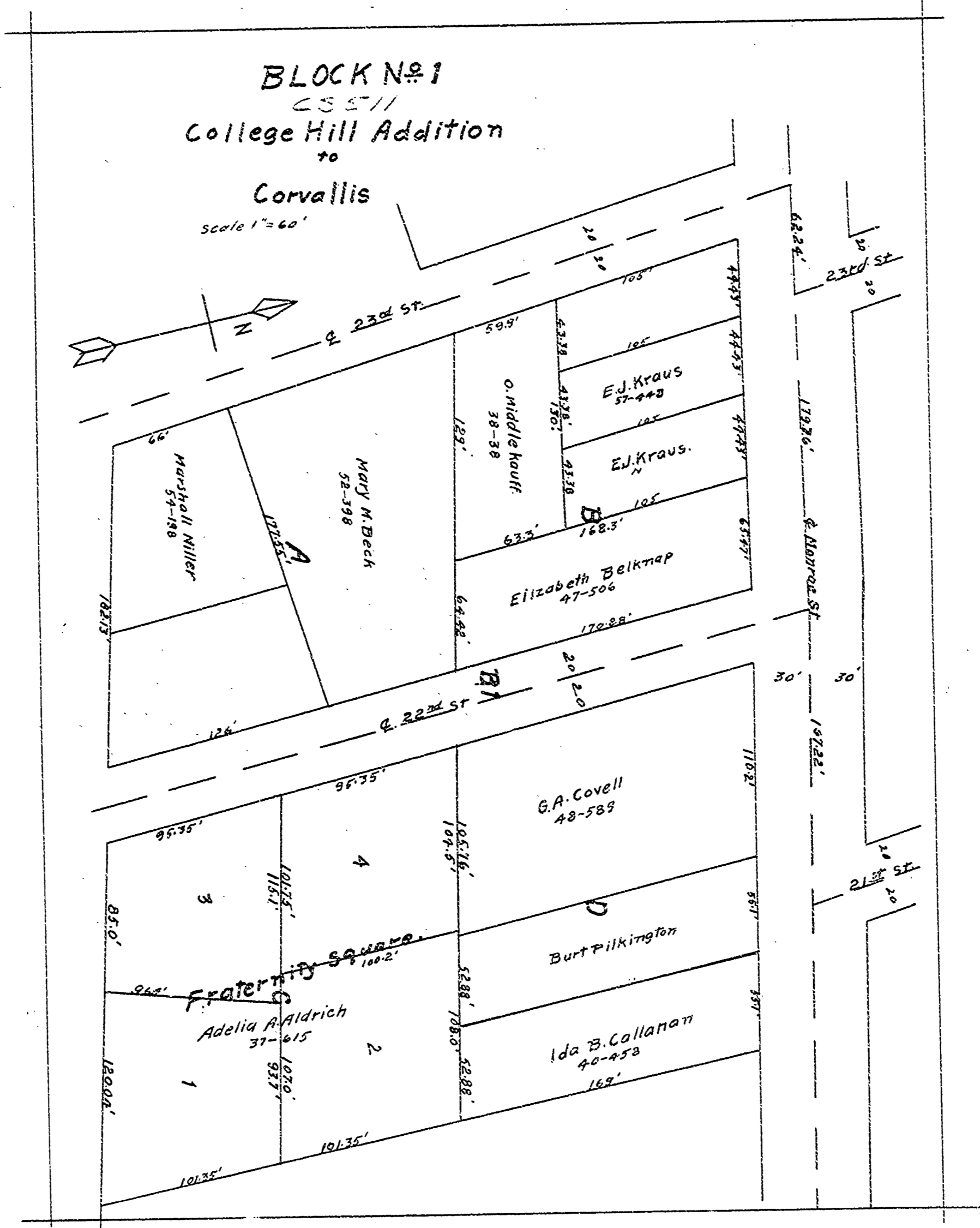


25571  
 Supplemental plat to the  
 College Hill Addition  
 to the City of Corvallis -  
 Benton County, Oregon.

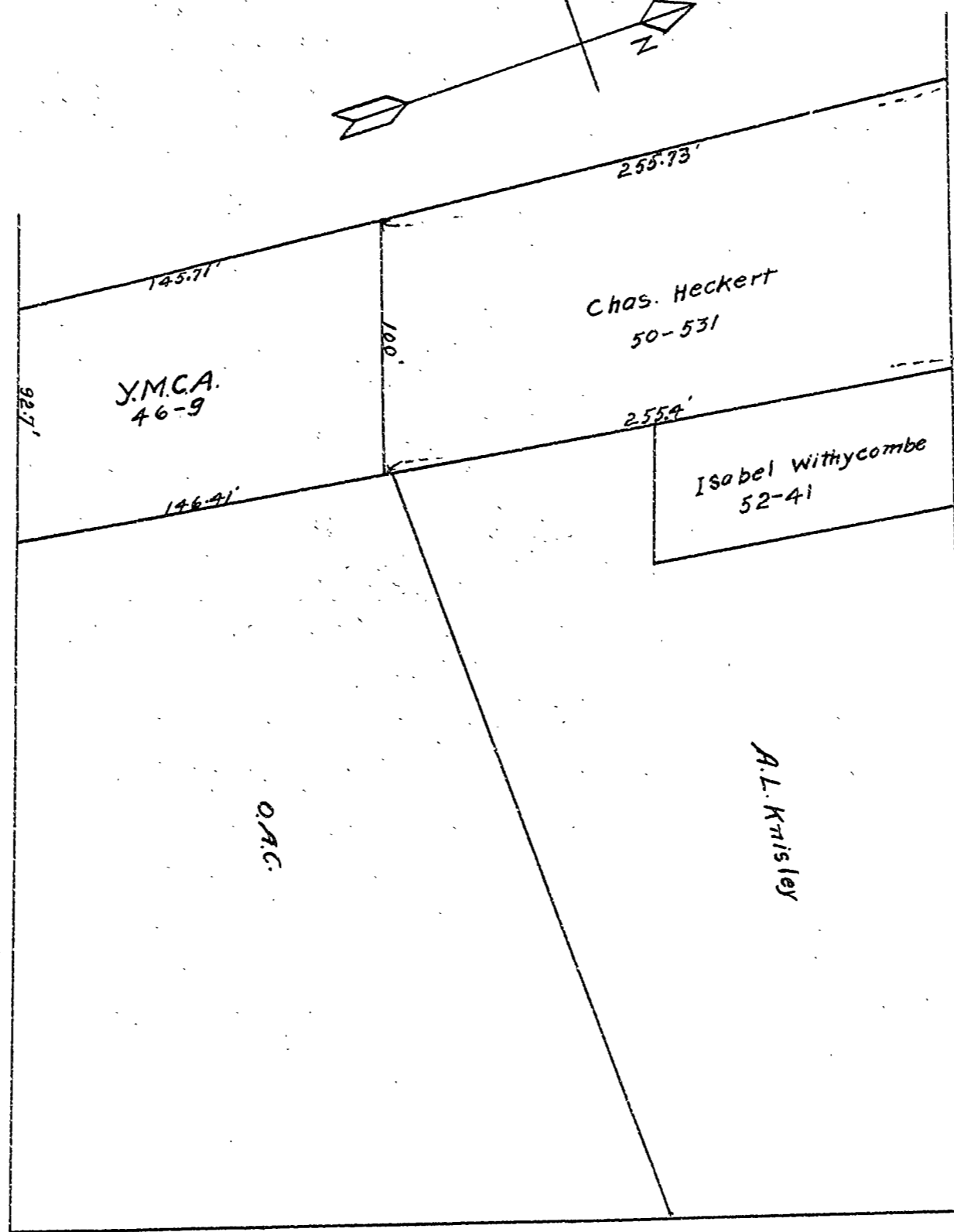
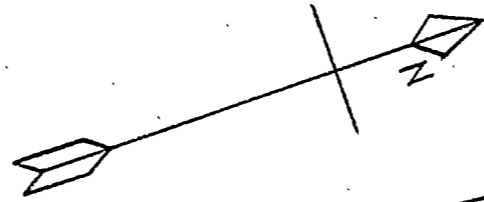


BLOCK No 1  
College Hill Addition

Corvallis  
Scale 1" = 60'



BLOCK № 2.  
25571  
College Hill Addition  
to  
Corvallis.  
Scale - 1" = 60'



21<sup>st</sup> St.  
1170.6'  
E. Adams St.  
Kings Road

E. 16<sup>th</sup> St.

