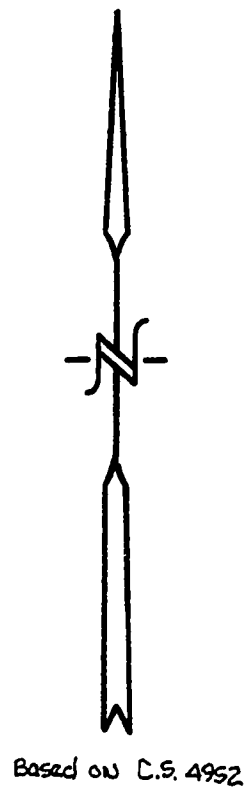
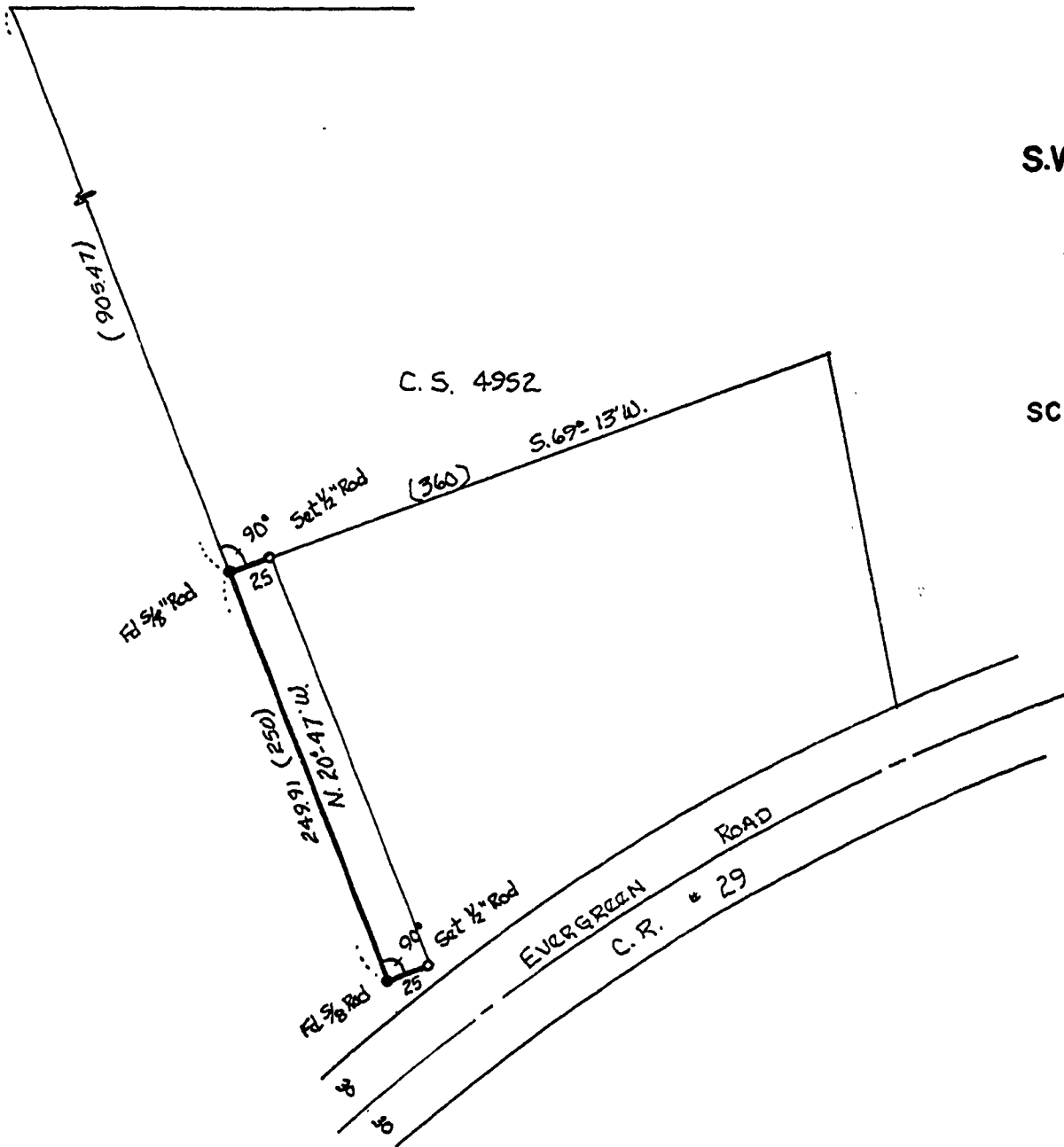


S110 POINT IS NORTH 20.000 ch.
 ALONG THE WEST LINE of and
 S. 89° 55' W. 3159.16 ft FROM
 THE S.W. CORNER of the Eldridge
 HARTLESS D.L.C. # 51.
 Per C.S. 267.



Based on C.S. 4952

514B

DAVE VINCENT

S.W. 1/4 SECTION 14, T.12 S., R. 6 W., W.M.

BENTON COUNTY, OREGON

SCALE: 1" = 100'

NOVEMBER 2, 1971

REGISTERED
OREGON
LAND SURVEYOR

Kenneth M. Wightman

JULY 17, 1970
KENNETH M. WIGHTMAN II
942