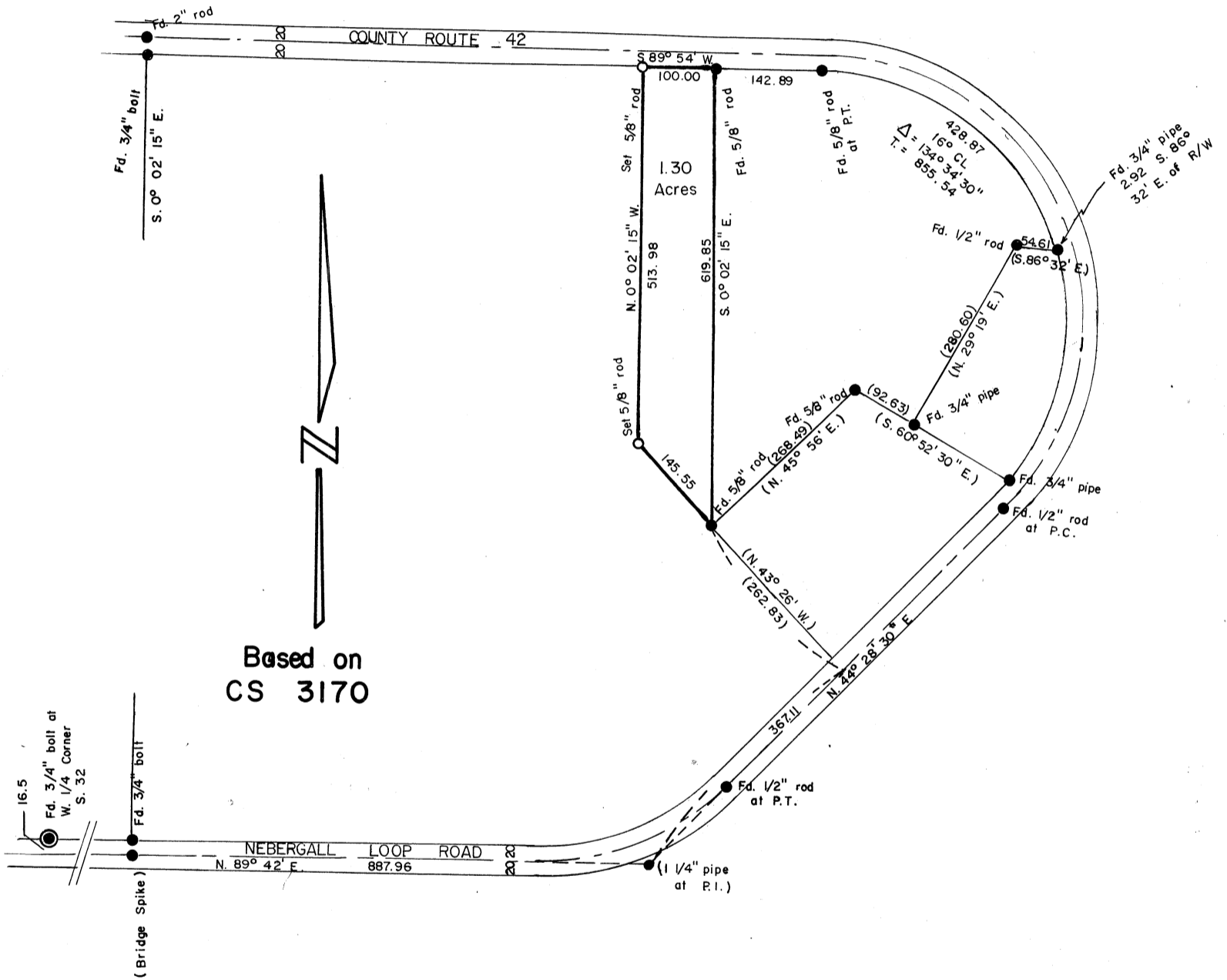


FELIX HAMMACK

N.W. 1/4 SECTION 32, T.10S., R.3W., W.M.
Benton County, Oregon

Scale: 1" = 200'

September 14, 1972



REGISTERED
PROFESSIONAL
LAND SURVEYOR

Kenneth M. Wightman

OREGON
JULY 17, 1970
KENNETH M. WIGHTMAN II
942