

49614

5390

SURVEY FOR
CITY OF CORVALLIS
IN

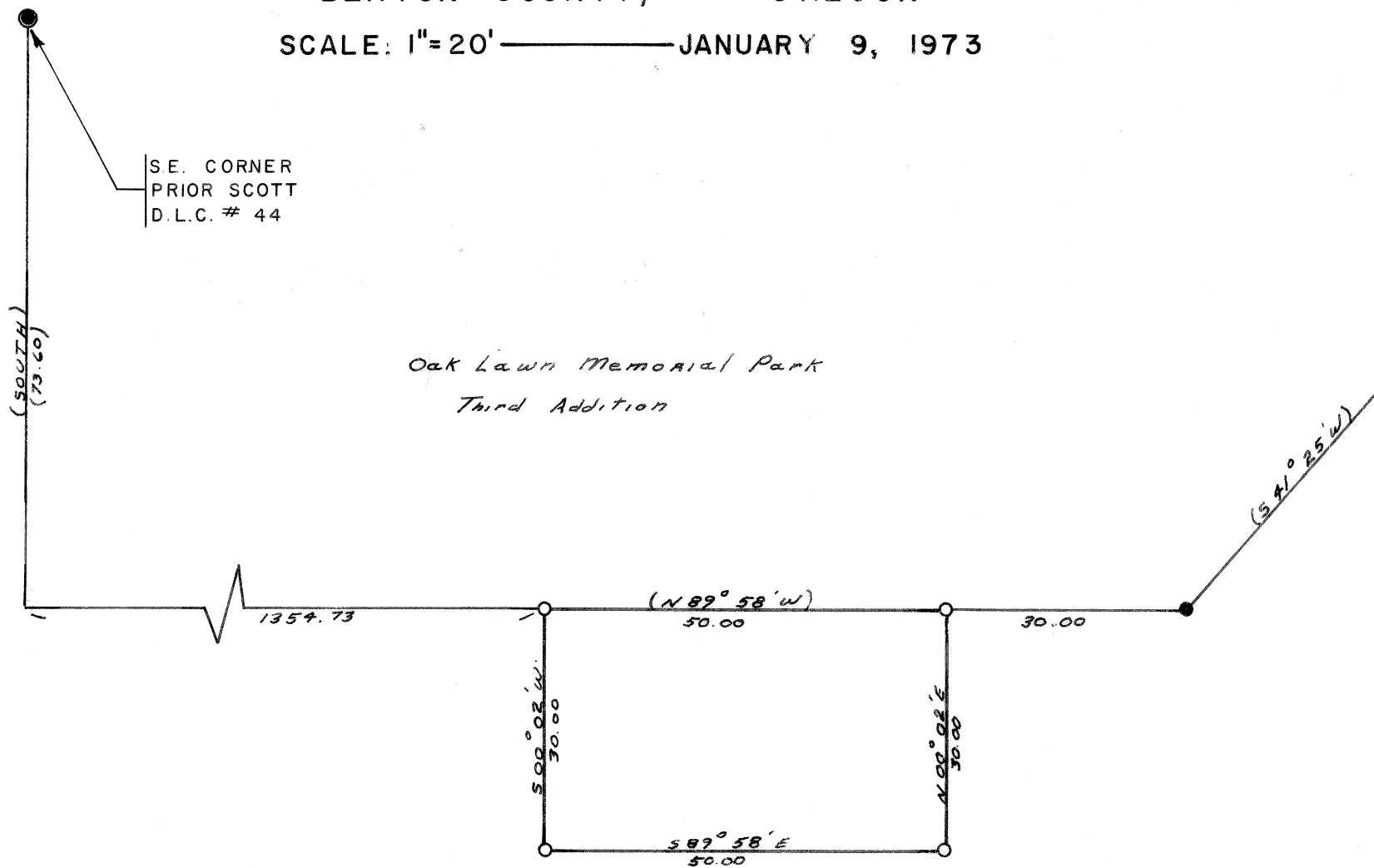
SEC. 10, T. 12 S., R. 5 W., W.B.M.
BENTON COUNTY, OREGON

SCALE: 1"=20' ————— JANUARY 9, 1973



SE. CORNER
PRIOR SCOTT
D.L.C. # 44

Oak Lawn Memorial Park
Third Addition



() INDICATES
DATA TAKEN FROM SUB-
DIVISION PLAT OF OAK LAWN
MEMORIAL PARK 3rd Add.

