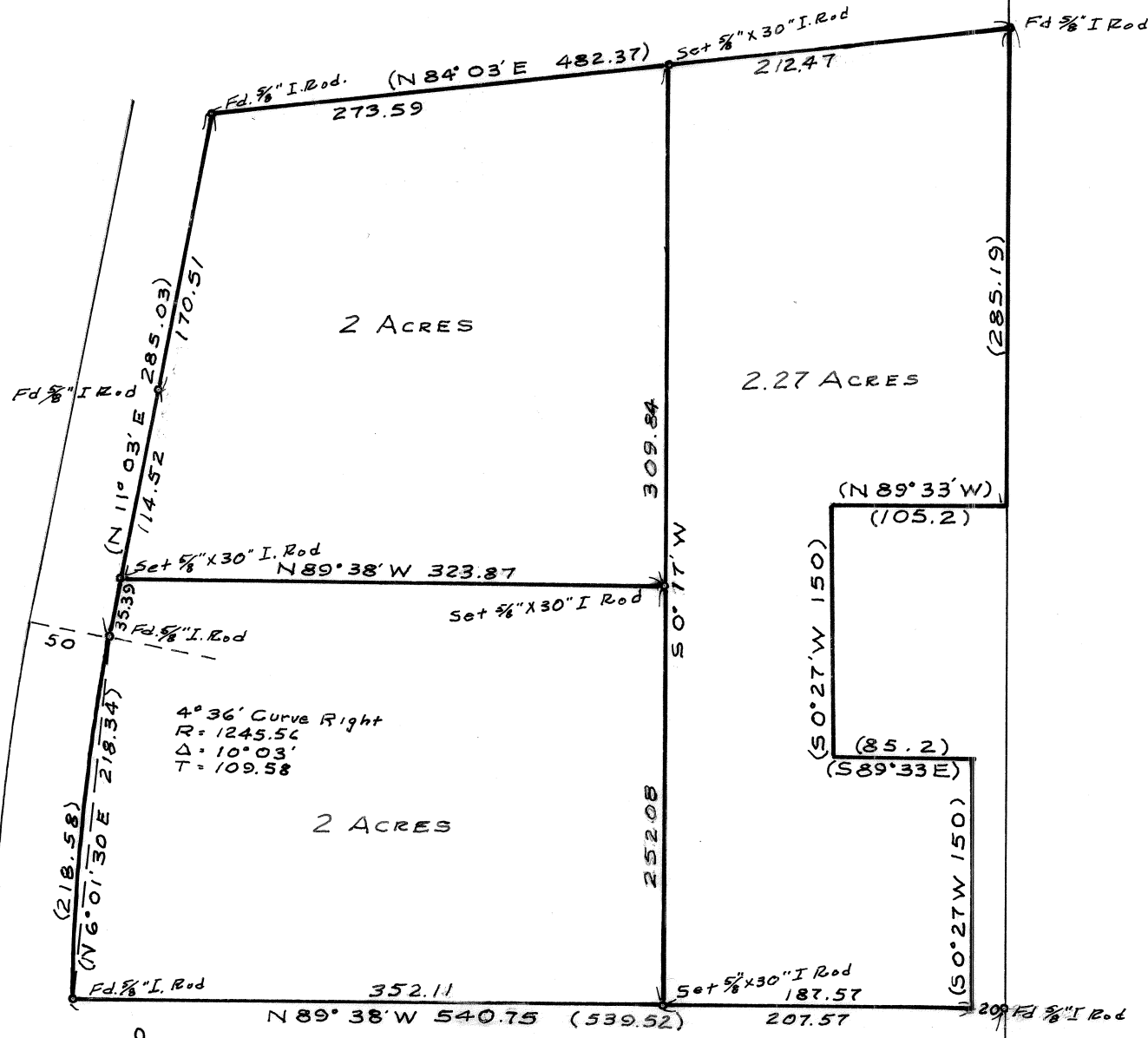


Record of Survey
for
GRAY BUCKNER
in the
N.E. 1/4 of Sec. 3, T.11S., R.4W., W.B. & M.
Benton County, Oregon
Scale: 1" = 100' September 13, 1972

Parentheses indicate information
from County Survey records or deeds.

Bearings from C.S. 4455



REGISTERED
PROFESSIONAL
LAND SURVEYOR

Verle C. Moore

OREGON
MAY 13, 1960
VERLE C. MOORE
501

S.E. Corner of the
N.E. 1/4 of Sec. 3

3 2

5395

5395