



NW CORNER CHARLES JOHNSON DLC N^o 52
 End 1/2" pipe

CS 5438

SURVEY FOR U.S. DEPARTMENT OF AGRICULTURE
 PESTICIDES REGULATION DIVISION OF E. P. A.

AT OREGON STATE UNIVERSITY

SECTION 34 T11S, R5W, W.M.

EIMSTAD & ASSOCIATES

1717 WASHINGTON ST. EUGENE, ORE

OCTOBER, 1971

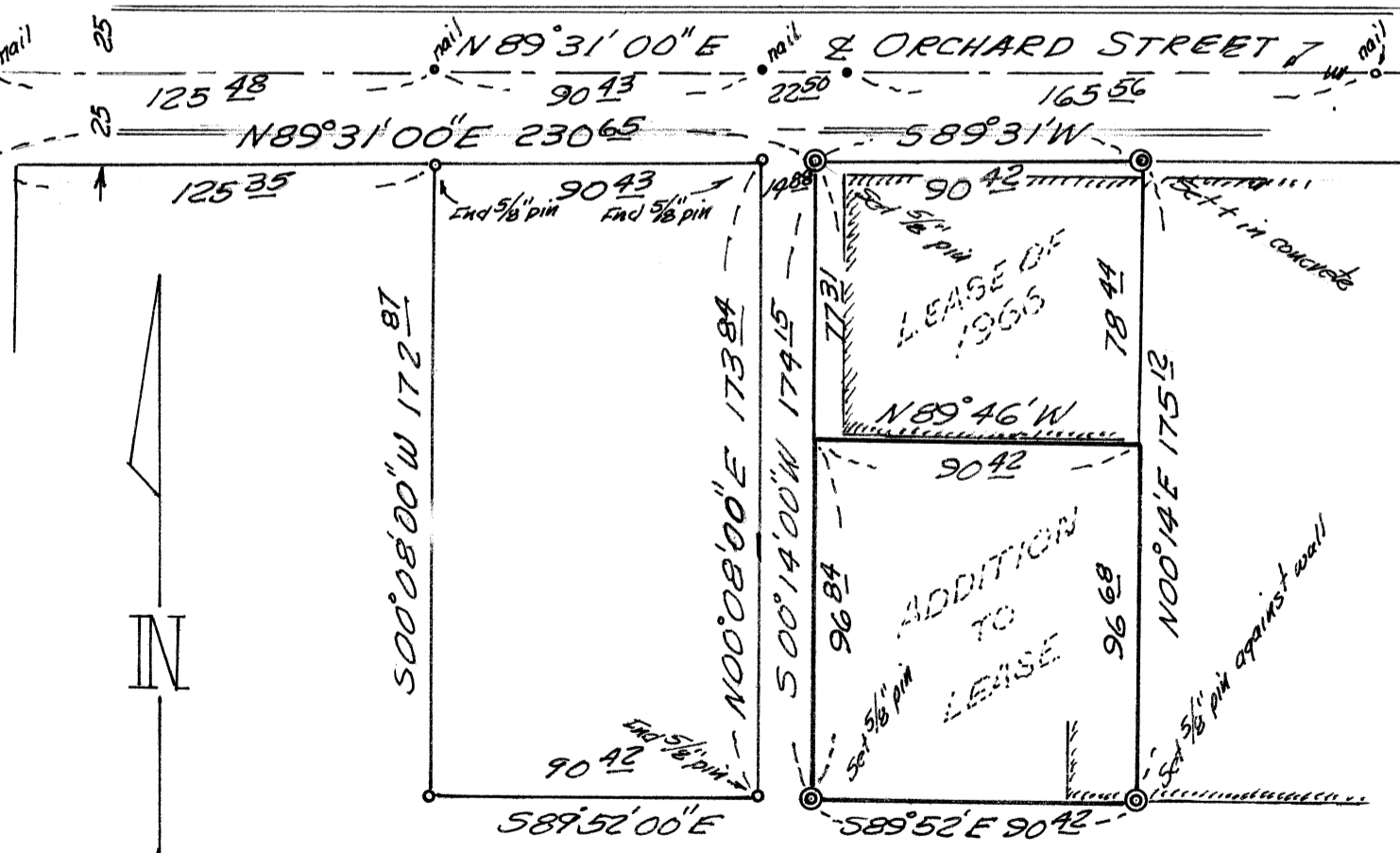
SCALE

1 INCH = 50 FEET

500°09'40"E 1459.49

1934.49

WEST LINE JOHNSON CLAIM



REGISTERED
 OREGON
 LAND SURVEYOR

William A. Eimstad

MAY 4, 1956
 WILLIAM A. EIMSTAD
 377

End 1" pipe in concrete