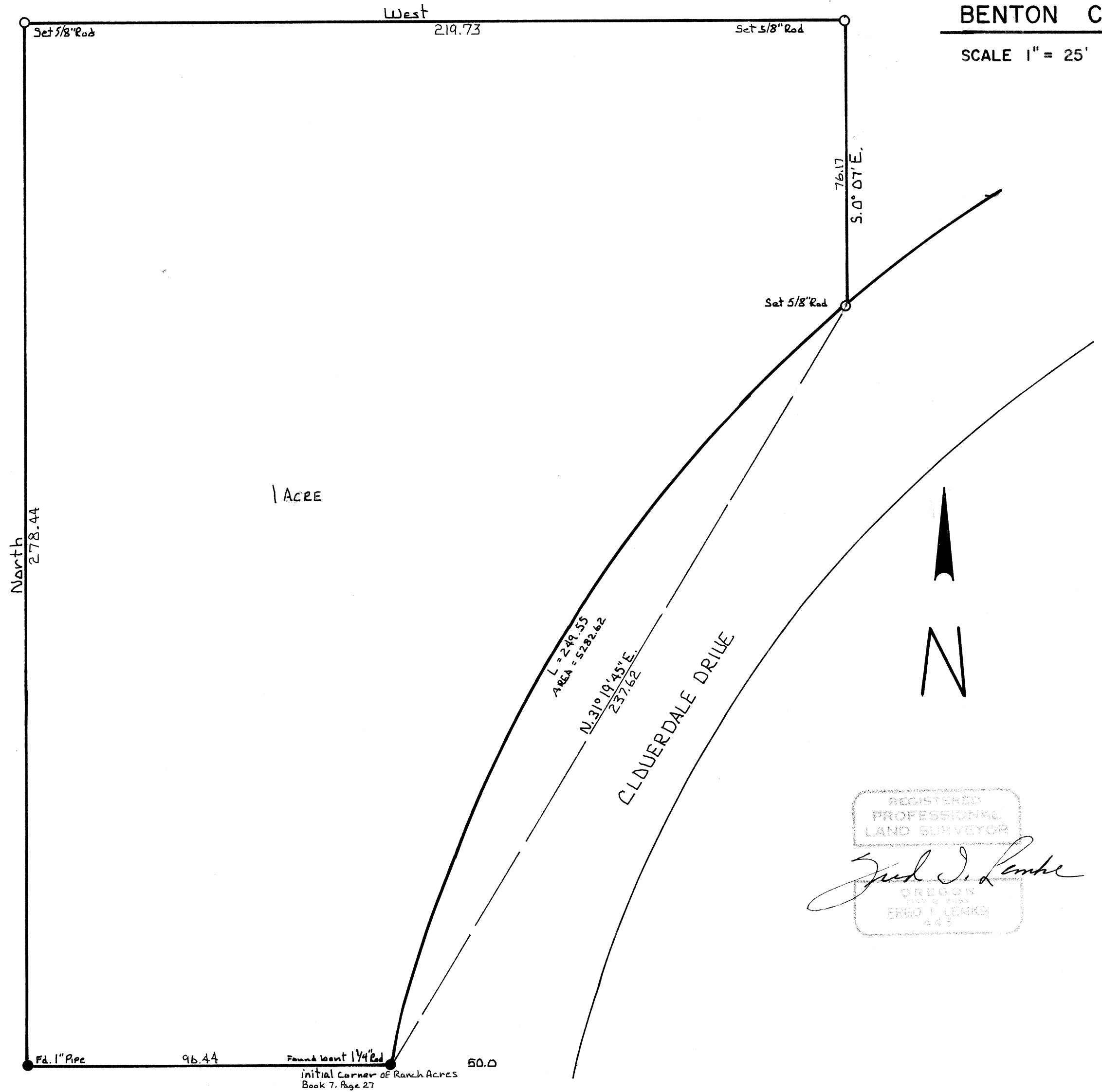


CS ~~5477~~ 5477
 SURVEY FOR: JOHN CUDE
 In Section 31, T.10S., R.3W., W.M.
 BENTON COUNTY, OREGON

SCALE 1" = 25' APRIL 4, 1973

Legend

- Corners found
- 5/8" Rod Set



REGISTERED
 PROFESSIONAL
 LAND SURVEYOR
Fred J. Lemke
 OREGON
 FRED J. LEMKE
 443