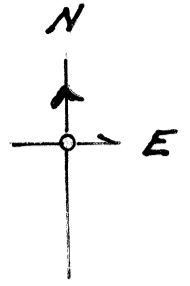


CS 5480

GORDON E. TJERNLUND

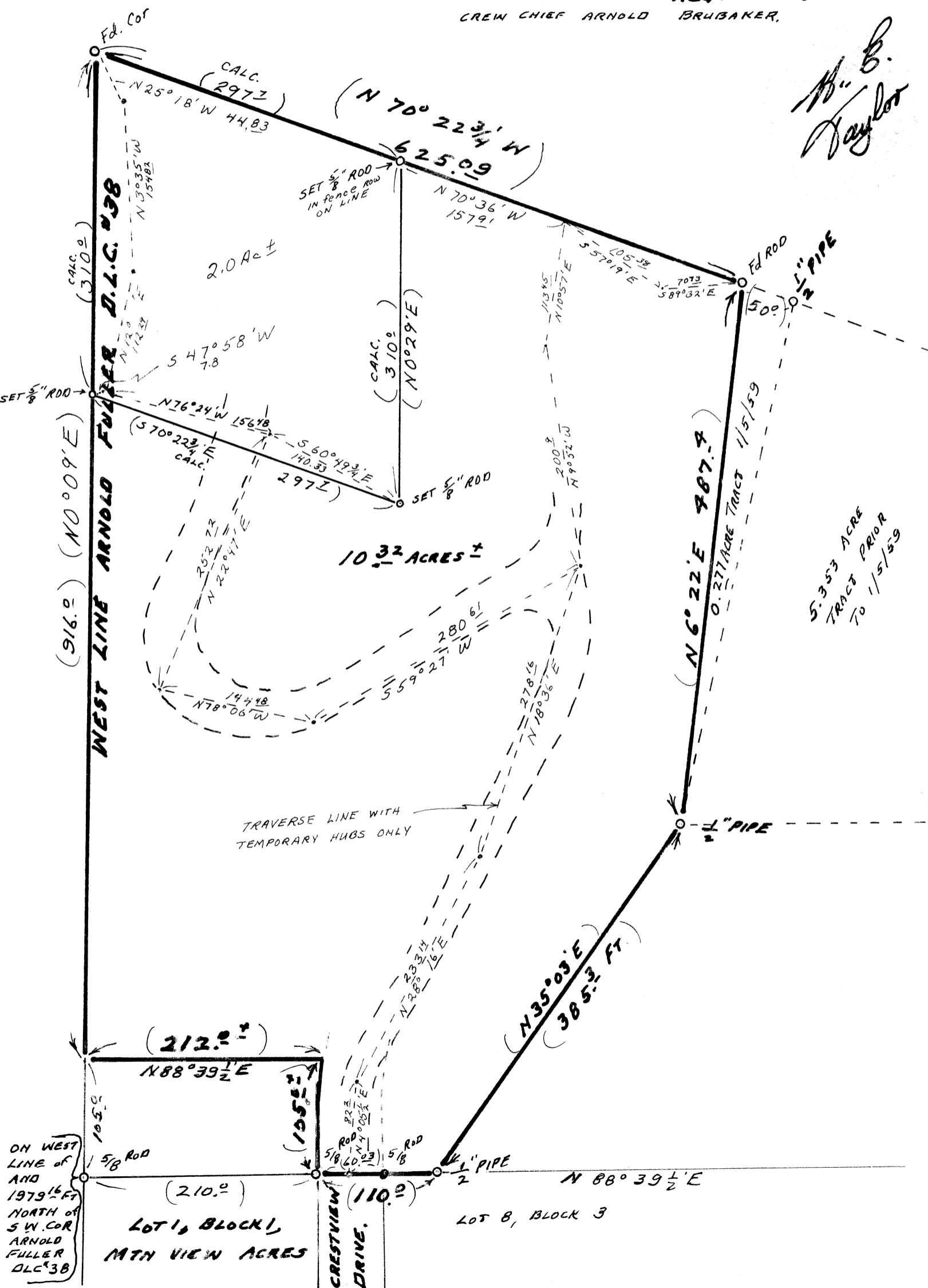
D.L.C. #38 SEC 11, T11S, R5W, W.M.
BENTON COUNTY, OREGON



SCALE 1" = 100 FT.
6/11/73

BERT W. LIDELL
DRAWN BY HOWARD E. TAYLOR
REG. ENGRS.
CREW CHIEF ARNOLD BRUBAKER,

H. E. Taylor



5.353 ACRE TRACT PRIOR TO 1/5/59