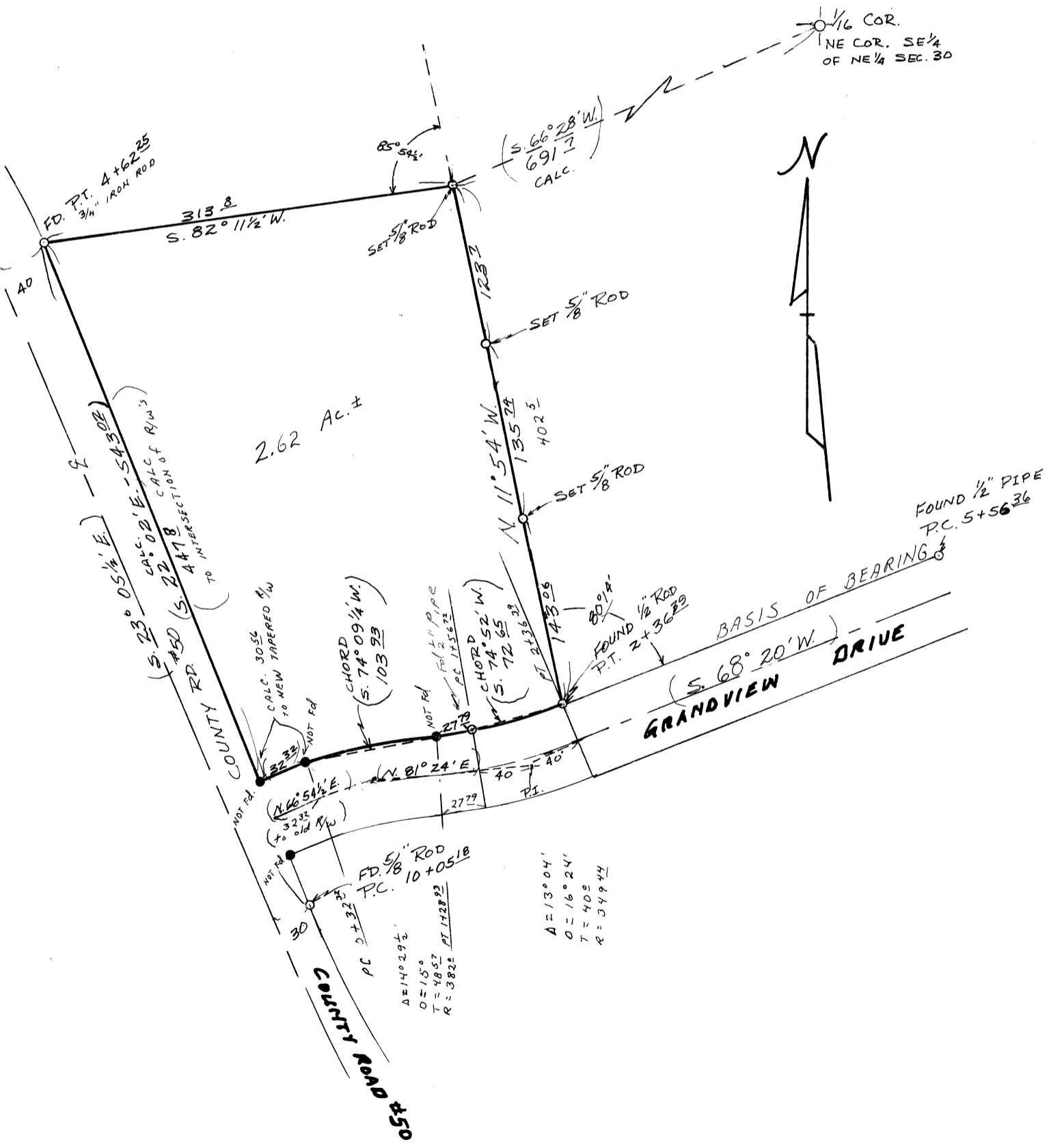


CS 5532  
**MRS. GILBERT PRUITT**  
 NE 1/4 SEC. 30, T11S., R.5W., W.M.  
 BENTON COUNTY, DRE.

SCALE: 1" = 100' JULY 24, 1973  
 BERT W. UDELL - R.P.E. #2301  
 BY: ARNOLD BRUBAKER - R.L.S. #992

*Bert W. Udell*

BASED ON CS 3841



$\Delta = 14^{\circ} 29' 1/2"$   
 $D = 15'$   
 $T = 48.57$   
 $R = 382.2$  PT 1128.2

$\Delta = 13^{\circ} 04'$   
 $D = 16^{\circ} 24'$   
 $T = 40.2$   
 $R = 349.44$