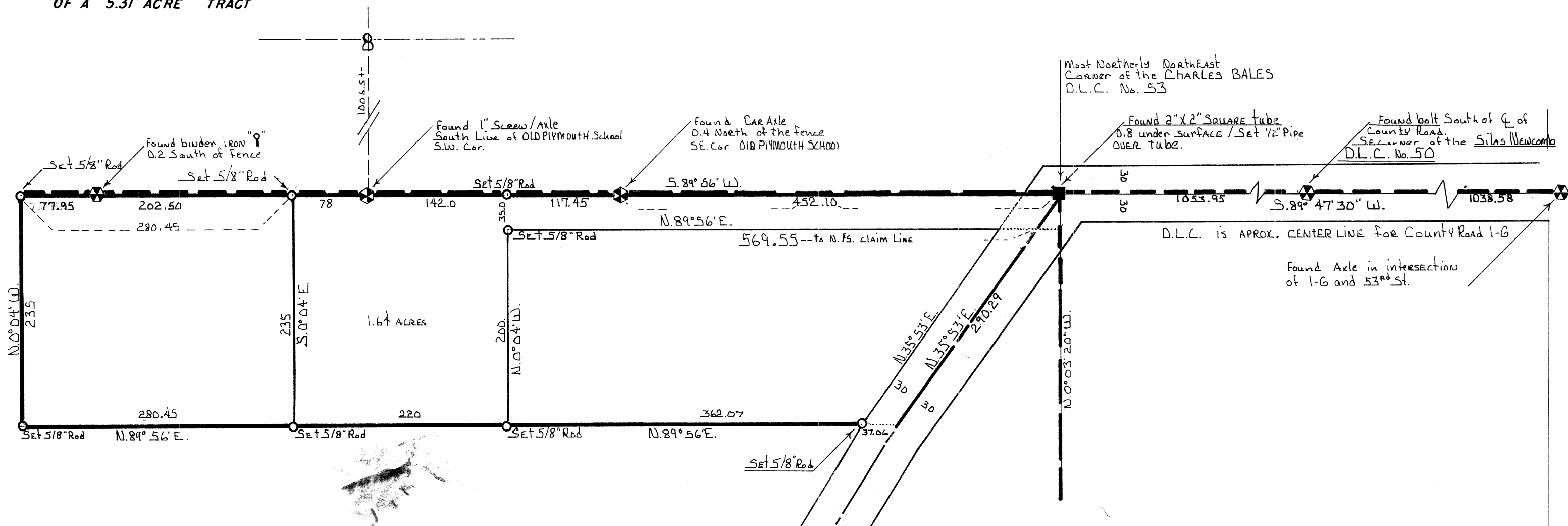


MAP of SURVEY

OF A 5.31 ACRE TRACT



C.S. # 5547

FOR: **EARL JONDAHL**

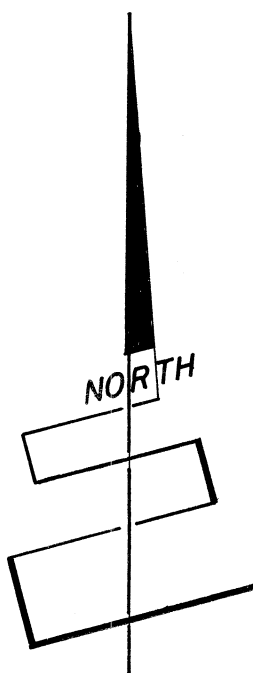
IN THE CHARLES BALES D.L.C. No. 53

SECTION 8, TOWNSHIP 12 SOUTH, RANGE 5 WEST of WILL. MER.

BENTON COUNTY OREGON

SCALE 1" = 100'

OCTOBER 24, 1973



REGISTERED
PROFESSIONAL
LAND SURVEYOR

Fred I. Lemke

OREGON
MAY 2, 1959
FRED I. LEMKE
443