

5583

LES HOBIN
 NE 1/4 SEC 12, T. 12 S., R. 6 W.
 BENTON COUNTY, ORE.

SCALE: 1" = 400' STARTED - SEPT. 29, 1973
 FINISHED NOV. 16, 1973

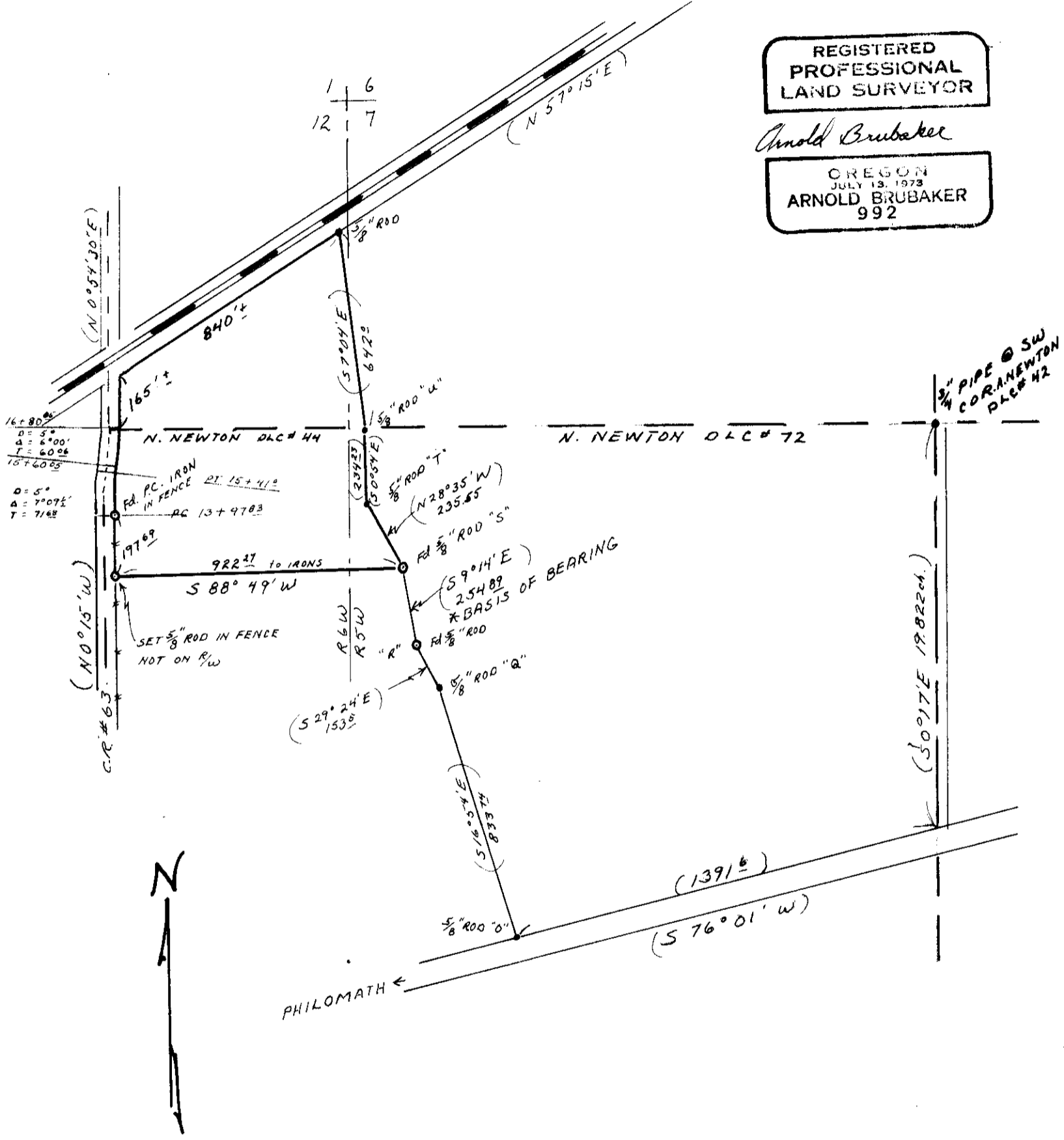
BERT W. UDELL R.P.E. # 2301
 BY ARNOLD BRUBAKER R.L.S. # 992

BASED ON A SURVEY FOR REX CLEMENS
 DATED MAY 18, 1972.

REGISTERED
 PROFESSIONAL
 LAND SURVEYOR

Arnold Brubaker

OREGON
 JULY 13, 1973
 ARNOLD BRUBAKER
 992



5583