

5602

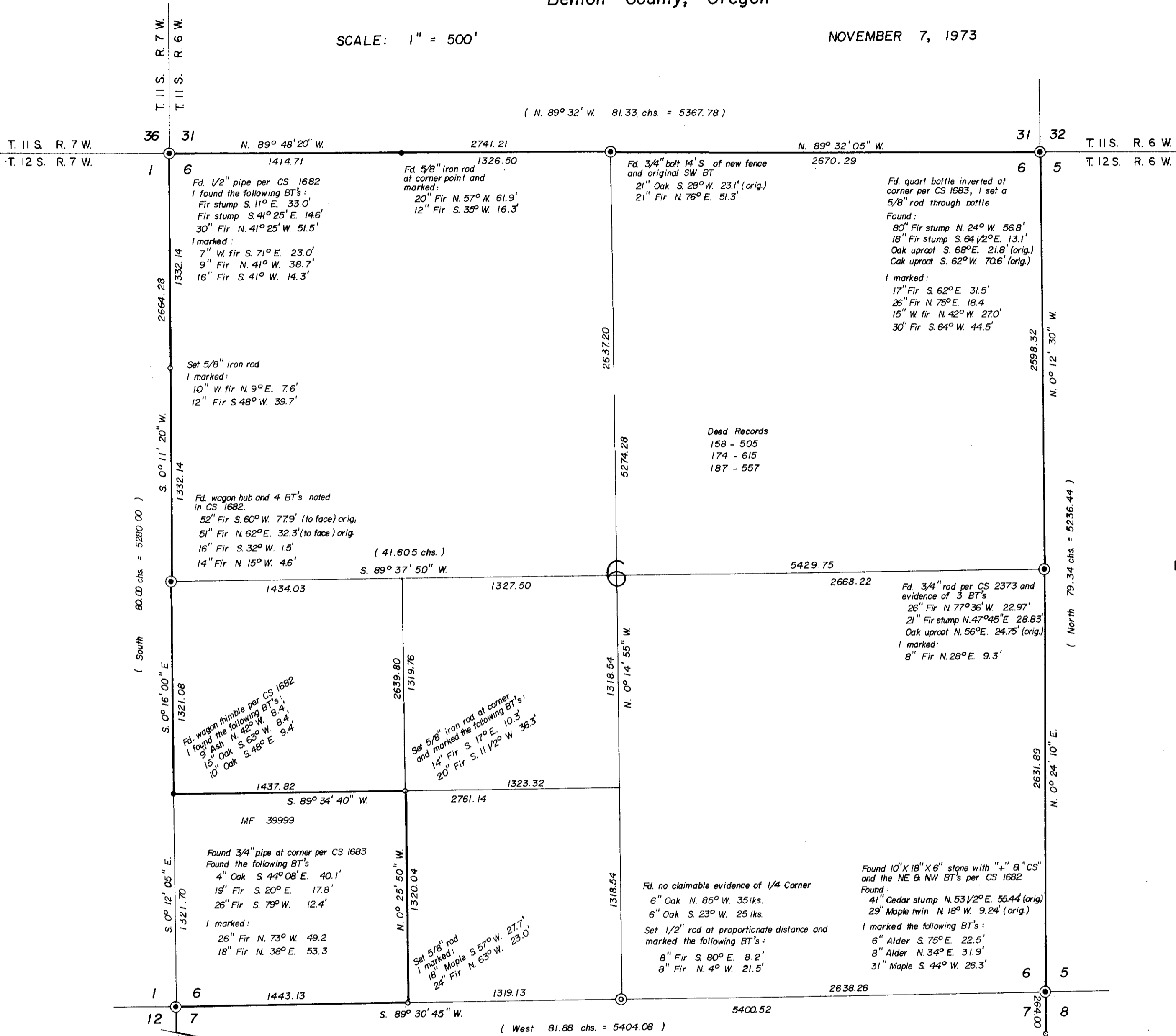
MOUNTAIN FIR LUMBER COMPANY

SECTION 6 & N 1/2 SECTION 7, T.12 S., R.6 W., W.M.
Benton County, Oregon

SCALE: 1" = 500'

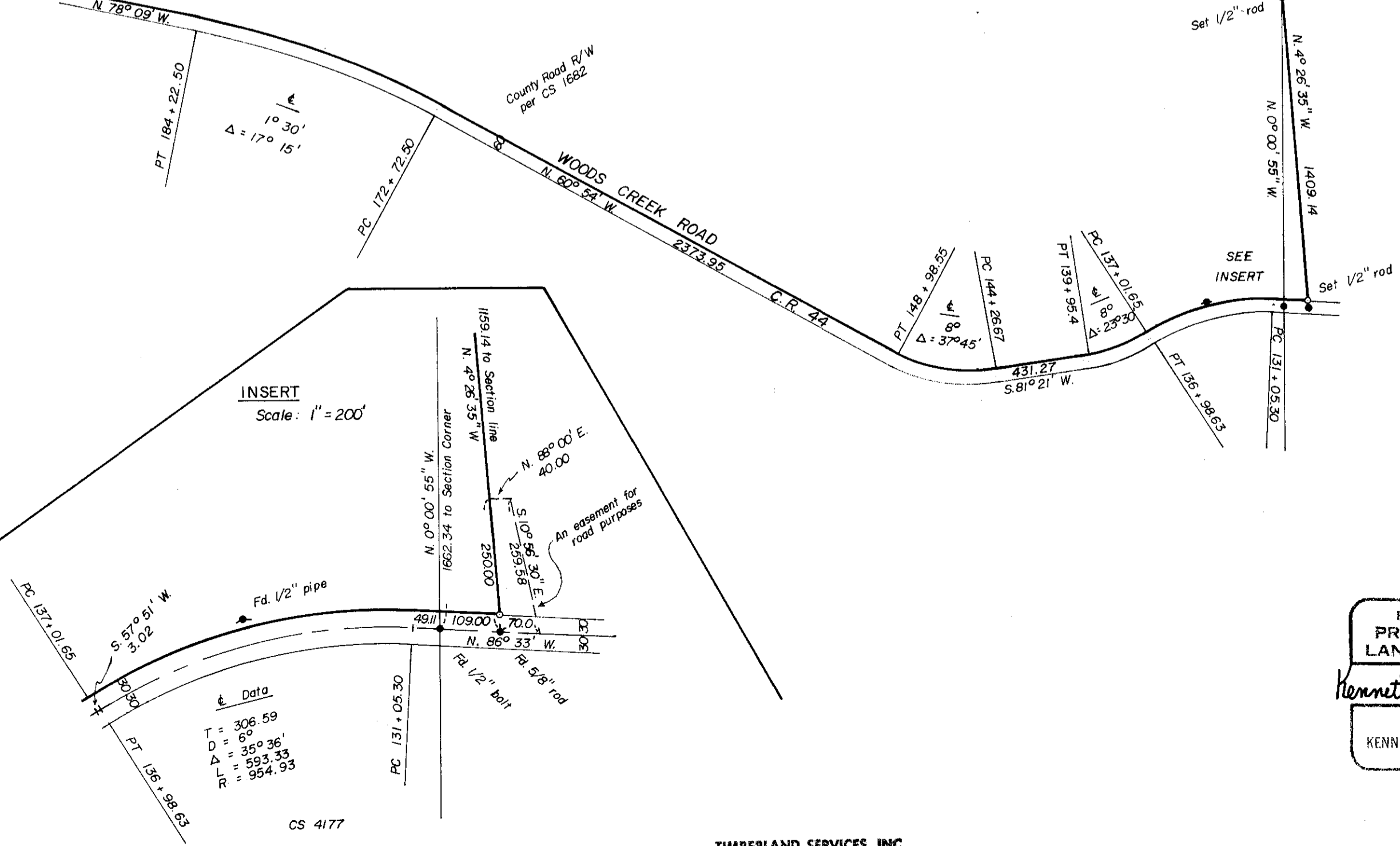
NOVEMBER 7, 1973

(N. 89° 32' W. 81.33 chs. = 5367.78)



N

Based on CS 1682



REGISTERED
PROFESSIONAL
LAND SURVEYOR

Kenneth M. Wightman

OREGON
JULY 17, 1970
KENNETH M. WIGHTMAN II
942