

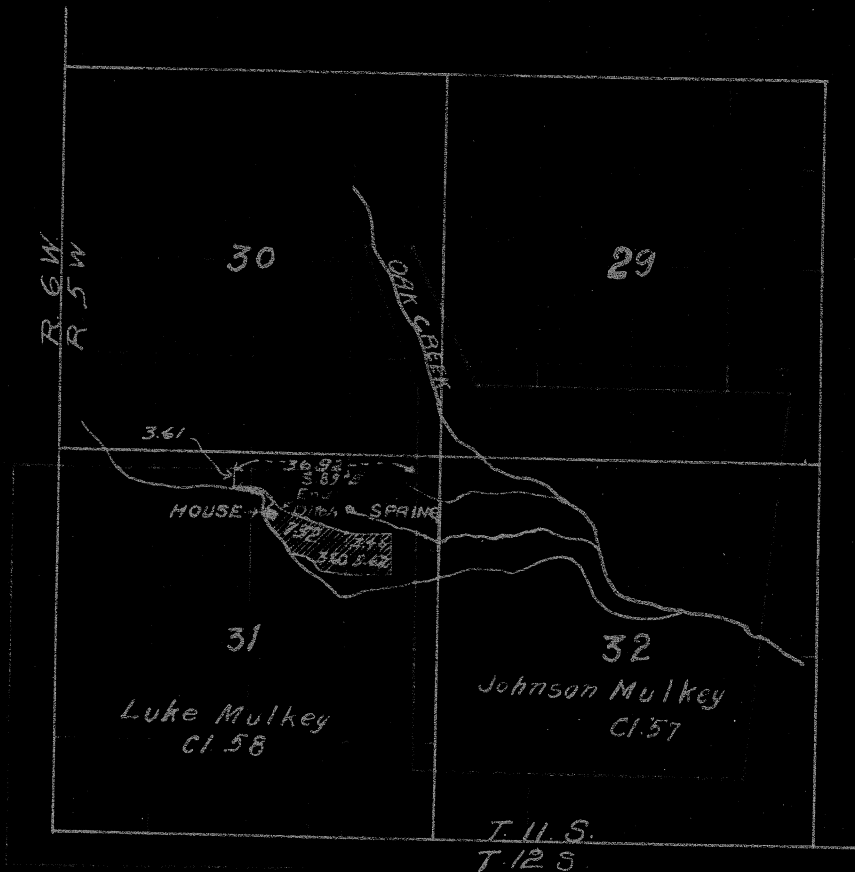
# 562

## CERTIFICATE OF SURVEYOR.

I, Burt Wilkes, of Corvallis, Oregon, do hereby certify that this map was made from notes taken during an actual survey made by me on Aug. 23, 1916, and that it correctly represents the works described in the accompanying application, together with the location of streams and other ditches in the immediate vicinity

Scale 1 inch = 40 Chs.

*Burt Wilkes*  
Surveyor.



40 Miscellaneous #562 FB#19

5.00  
1.25  
3.69  
3.63

J.W. Foster - Irrigation ditch

Aug 22 1916  
For location of upper dam

C	D	Remarks
S. 50° 30' E	.30	
S. 67° 45' E		ditch
S. 57° 00' E	1.75	to L
	2.339	N 42° W to P.I.
S. 37° 37' E	1.054	S. 25° W 200' to Tract A
S. 53° E	2.959	S. 30° 10' W 203 S. 17° 30' E S. 13° 55' E S. 27° 20' E S. 27° 30' E S. 33° 32' E S. 37° 30' E S. 45° 00' E
S. 71° 30' E	4.175 4.197 4.565 14.555	
		N. 77° 04' W S. 79° 21' W S. 17° 08' W S. 4° 15' E
S. 4° 15' E	3.004 + 5.285 = I	S. 73° 33' W S. 75° 03' W S. 55° 30' W S. 30° 05' W S. 4° 15' E 5.285 = I
N. 39° 18' E	15.00	FOR tie to 7 cl.
N. 51° 18' E	37.632	T Mulkey cl. Move pipe .25 S Per W.C.G.

AT D Run N 81° 42' W. 4317 (-)  
S. 65° 00' W 0.650 Center spillway  
Width Spillway 299' depth .11'  
AT E a Δ in OS #. bears N 4° 02' W 267 + 20'

B  
C  
D  
E  
F  
G  
H  
I  
C  
D  
H  
I

E  
F  
G  
H



was made from notes taken during an actual survey made by me on Aug. 23, 1916, and that it correctly represents the works described in the accompanying application, together with the location of streams and other ditches in the immediate vicinity

Burt Wilkes

Surveyor.

Scale 1 inch = 40 Chs.

T. 11 R. 5 Sec. 31

