

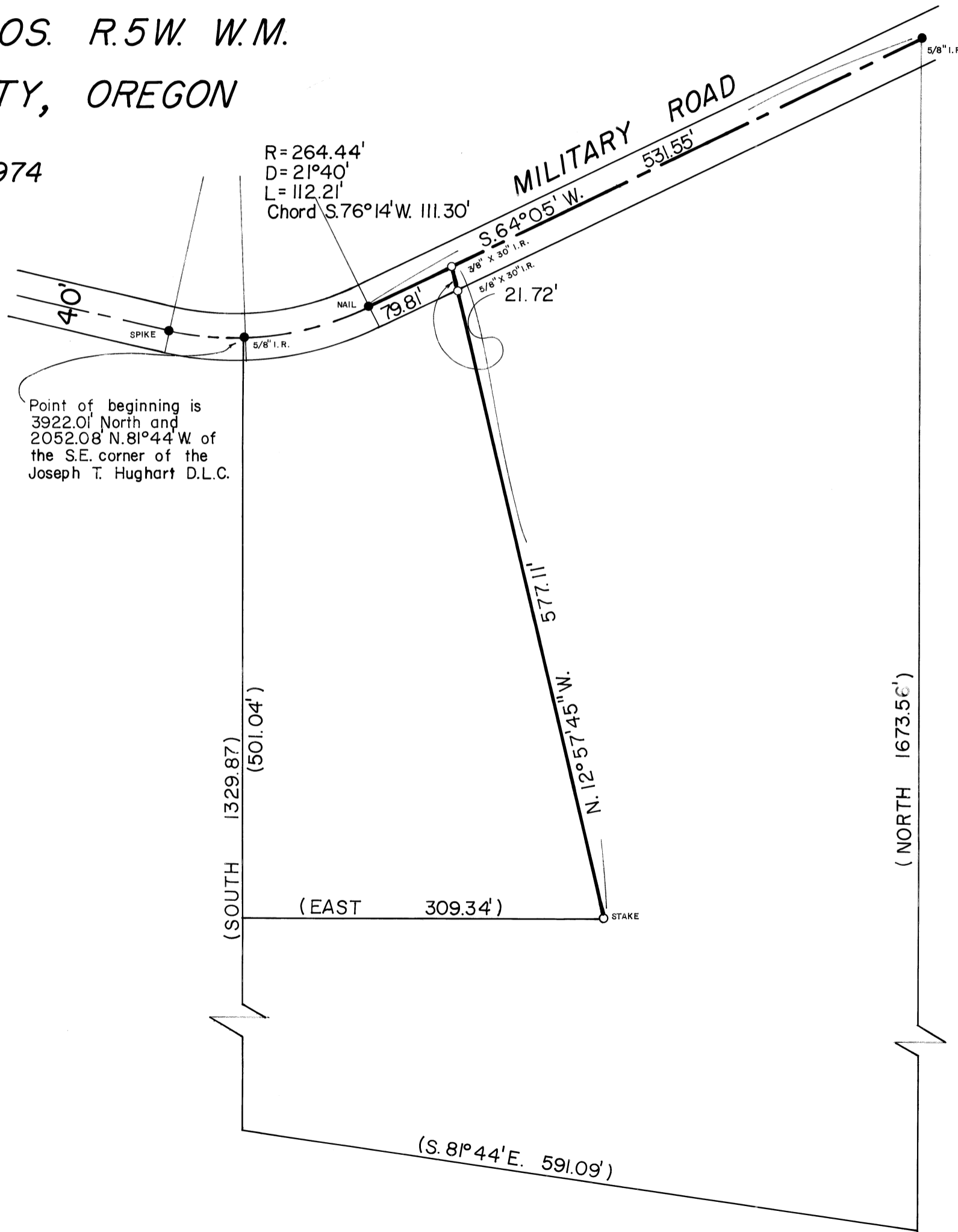
5679

SURVEY FOR NEAL H. BELL
SECTION 13 T.10S. R.5W. W.M.
BENTON COUNTY, OREGON

SURVEYED MAY 29, 1974

SCALE 1" = 100'

- Monument Found
- Monument Set
- () Data from Official Records



NEAL H. BELL
 REGISTERED PROFESSIONAL LAND SURVEYOR
 BENTON COUNTY, OREGON

REGISTERED PROFESSIONAL LAND SURVEYOR
Floyd L. Sigmond
 BENTON COUNTY, OREGON

