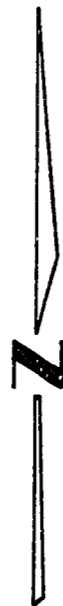
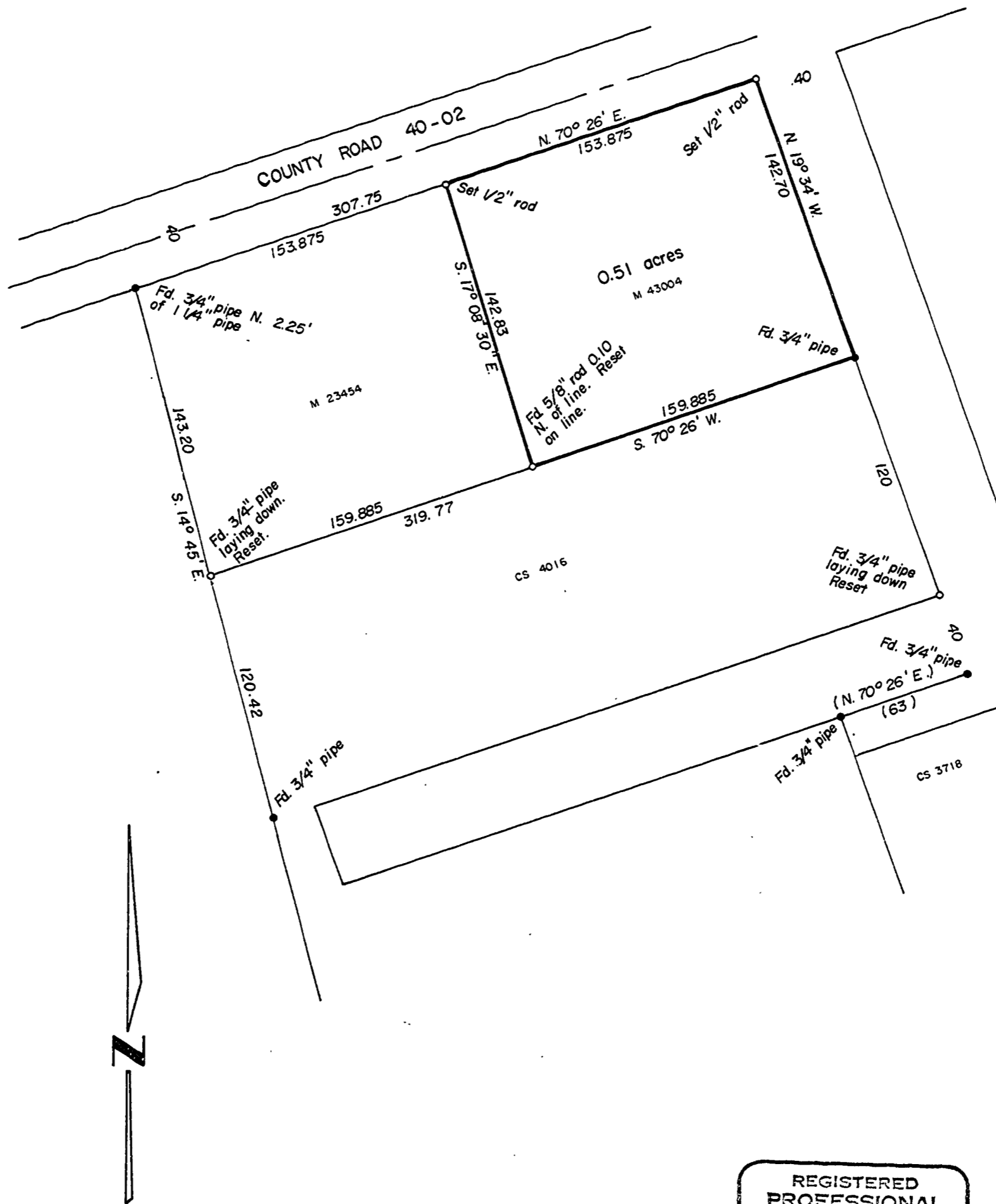


5692  
LYLE C. HARRISON

NE 1/4 SECTION 1, T.11 S., R.4 W., W.M.  
Benton County, Oregon

SCALE: 1" = 60'

MAY 6, 1974



Based on CS 4016

REGISTERED  
PROFESSIONAL  
LAND SURVEYOR

*Kenneth M. Wightman*

OREGON  
JULY 17, 1970  
KENNETH M. WIGHTMAN II  
942

TIMBERLAND SERVICES, INC.  
P.O. Box 668 - Albany, Ore. 97321  
Phone: 928-3539