

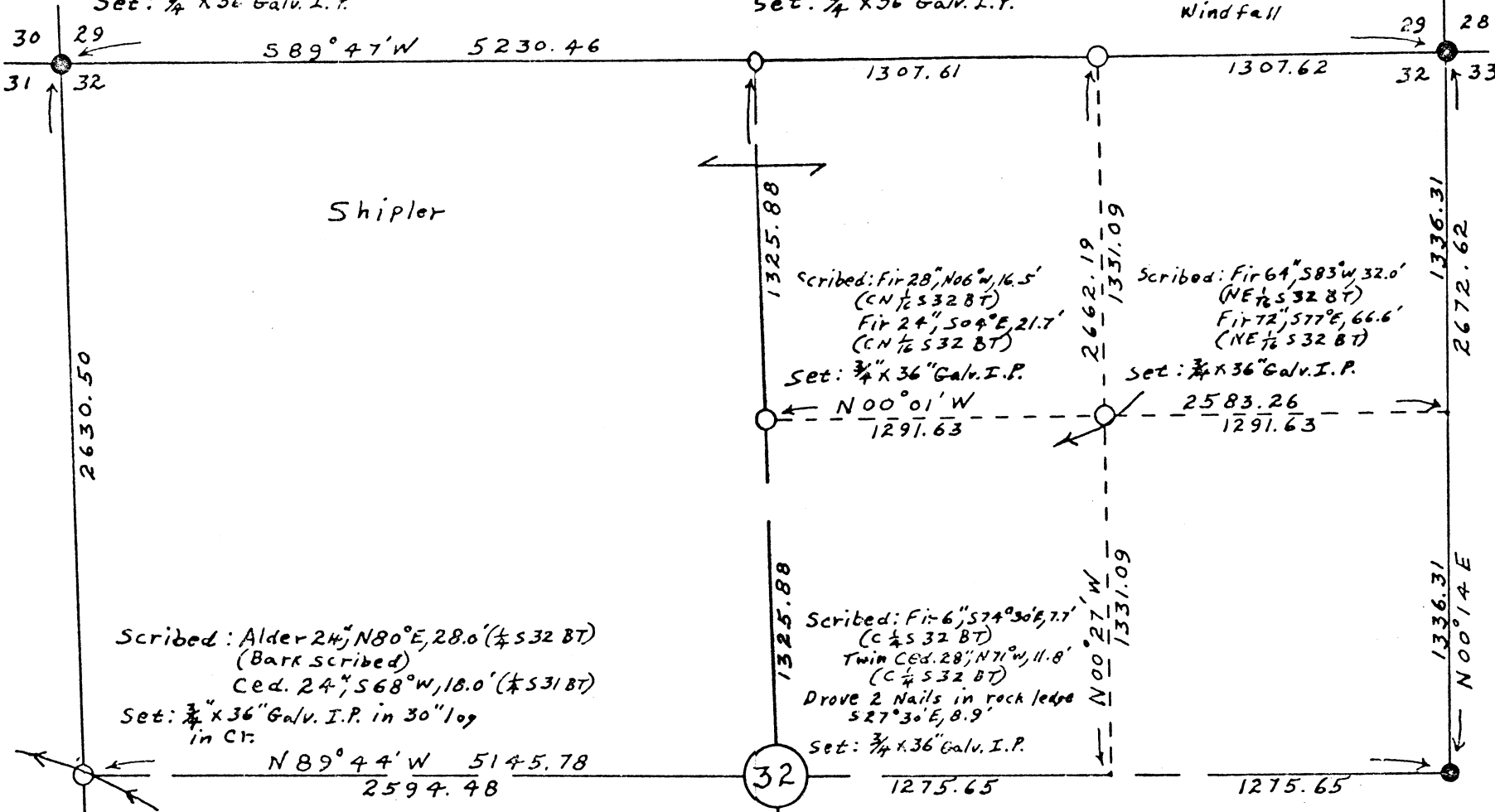
5723

T. 12 S., R. 7 N. 10. W. 1.
Section 32
Benton County, Oregon

Found: Rotted Hem. stub 20", N05°W, 19 Lks.
Scribe Visible (orig. called for Fir)
Scribed: Fir 36", S28°W, 4.0' (T12SR7WS31 BT)
Fir 32", S35°E, 27.6' (T12SR7WS32 BT)
Ced. 24", N65°E, 30.3' (T12SR7WS29 BT)
Carved "X" in stone 30" x 36" x 48", N12°W, 5.0' to X
Set: 3/4" x 36" Galv. I.P.

Scribed: Fir 10", S62°E, 8.8' (4532 BT)
Fir 24", N16°E, 14.0' (4529 BT)
Set: 3/4" x 36" Galv. I.P.
Scribed: Hem. 16", S60°W, 16.3' (E 1/2 S32 BT)
Hem. 14", N07°30'W, 32.7' (E 1/2 S29 BT)
Set: 1" x 48" Metal pipe along N. edge 56" Ced. Windfall

Found: 1" I.P.
Fir 36", S20°E, 58 Lks. (windfall)
Fir 36", S35°W, 34 Lks. (visible scribe)



Scribed: Alder 24", N80°E, 28.0' (4532 BT)
(Bark scribed)
Ced. 24", S68°W, 18.0' (4531 BT)
Set: 3/4" x 36" Galv. I.P. in 30" log in Ct.
N 89° 44' W 5145.78
2594.48

Scribed: Fir 6", S74°30'E, 7.7' (C 1/2 S32 BT)
Twin Ced. 28", N71°W, 11.0' (C 1/2 S32 BT)
Drove 2 Nails in rock ledge 527°30'E, 8.9'
Set: 3/4" x 36" Galv. I.P.

Scribed: Fir 64", S83°W, 32.0' (NE 1/2 S32 BT)
Fir 72", S77°E, 66.6' (NE 1/2 S32 BT)
Set: 3/4" x 36" Galv. I.P.

Found: 1" I.R.
Fir stump 60", S30°W, 16 Lks.
Yew set by County Surveyor

Survey for Thomas Shipler to mark his boundaries
Survey made in July & Aug., 1966 with one minute transit and 300' steel tape.
Bearings calculated from orig. bearing of South line
● Denotes Cor. Found
○ Denotes Cor. Set this Survey
Scale: 1" = 600'

Harry Miller
400
Darryl Miller

Found: BLM Brass Cap
36 | 31 West 5018.21
(78.00 chs.)

Scribed: Hem. 40", N15°E, 29.0' (T12SR7WS32 BT)
Hem. 36", S13°E, 49.8' (T13SR7WS5 BT)
Hem. 32", N55°W, 26.0' (T12SR7WS31 BT)
Set: 3/4" x 36" Galv. I.P.

Found: Rotted Ced. Stump 40", N70°W, 22 (Rotted face)
Hem. 18", S05°E, 12 (windfall with scribe visible)
(Record called for Fir)
Scribed: Ced. Stump 40", N83°E, 25.7' (4532 BT)
Hem. 6", S41°E, 17.8' (455 BT)
Set: 3/4" x 36" Galv. I.P.