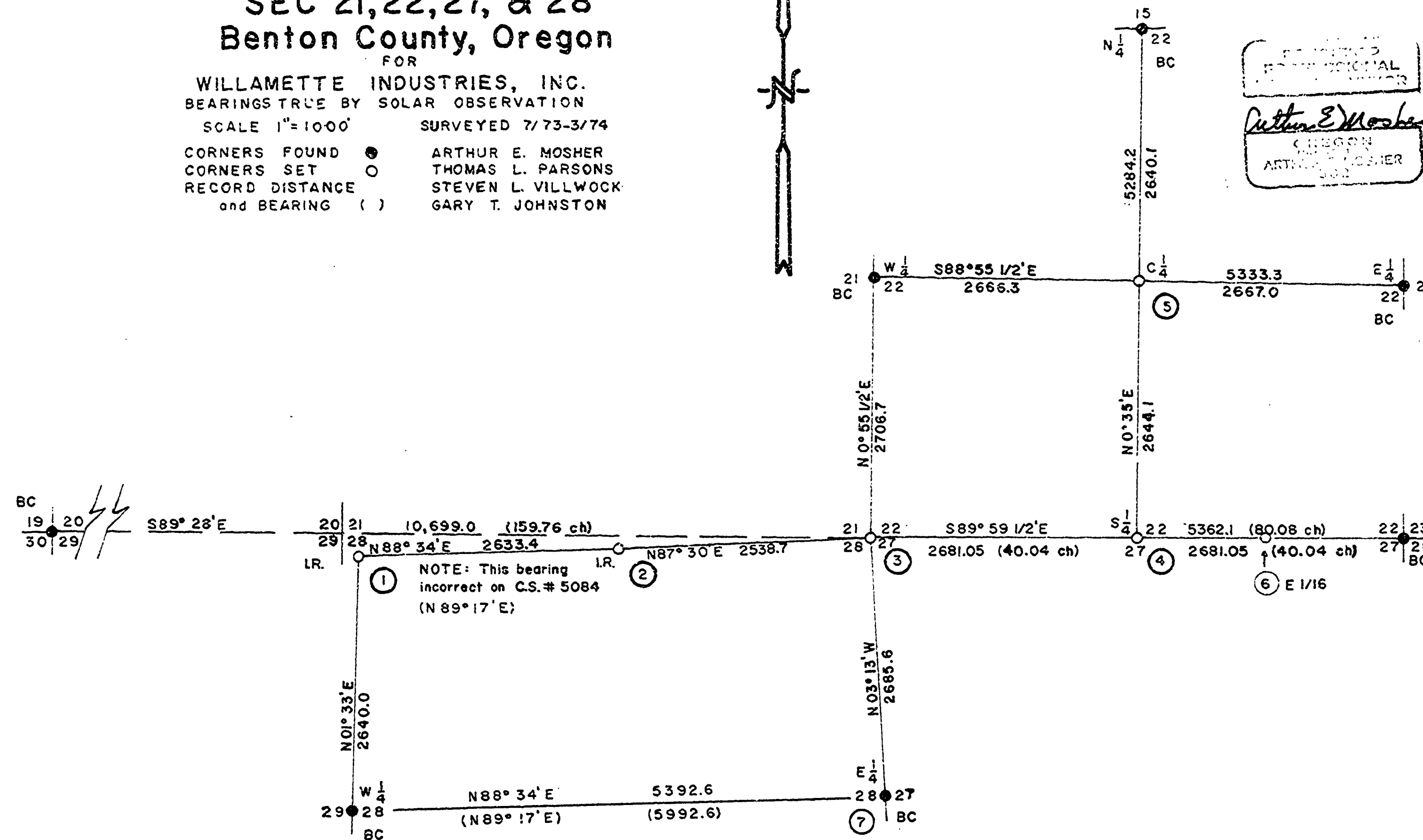


5767

**SURVEY**  
**IN**  
**T13S R8W WM**  
**SEC 21, 22, 27, & 28**  
**Benton County, Oregon**

FOR  
**WILLAMETTE INDUSTRIES, INC.**  
 BEARINGS TRUE BY SOLAR OBSERVATION  
 SCALE 1"=1000' SURVEYED 7/73-3/74  
 CORNERS FOUND ● ARTHUR E. MOSHER  
 CORNERS SET ○ THOMAS L. PARSONS  
 RECORD DISTANCE AND BEARING ( ) STEVEN L. VILLWOCK  
 GARY T. JOHNSTON



- ① TEMP SEC CORNER FILED C.S. #5084. PROPORTIONED DISTANCE EAST AND WEST WOULD PLACE THE CORNER FOR SEC 20, 21, 28 AND 29 172.2 FT WEST. TRUE LATITUDE NOT YET DETERMINED.
- ② TEMP 1/4 CORNER FILED C.S. #5084. PROPORTIONED DISTANCE EAST AND WEST WOULD PLACE THE 1/4 CORNER FOR SEC 21 AND 28 133.95 FT WEST. TRUE LATITUDE NOT YET DETERMINED.
- ③ SET: 5/8" X 30" I.R.  
 14" DF S97°W 1.3 FT. MKD. T13SR8WS28BT & W.I.I. Y. TAG  
 8" DF N58°W 16.9 FT. MKD. T13SR8WS21BT & W.I.I. Y. TAG  
 7" DF S33°E 18.9 FT. MKD. T13SR8WS27BT & W.I.I. Y. TAG  
 7" DF N46°E 14.7 FT. MKD. T13SR8WS22BT & W.I.I. Y. TAG
- ④ SET: 5/8" X 30" I.R. & 5' STEEL FENCE POST  
 36" D.F. S41°W 21.2 FT. MKD. 1/4 S27BT & W.I.I. Y. TAG  
 44" HEM. N81°W 47.7 FT. MKD. 1/4 S22 BT & W.I.I. Y. TAG  
 CORNER IS ON AN E/W RIDGE.

- ⑤ SET: 5/8" X 30" I.R.  
 16" HEM N53°E 3.0 FT. MKD. C1/4 S22 BT & W.I.I. Y. TAG  
 8" HEM S24°E 5.6 FT. MKD. C1/4 S22BT & W.I.I. Y. TAG  
 16" DF S40°W 12.3 FT. MKD. C1/4 S22 BT & W.I.I. Y. TAG  
 7" DF N62°W 13.5 FT. MKD. C1/4 S22 BT & W.I.I. Y. TAG
- ⑥ SET: 5/8" X 30" I.R. & 5' STEEL FENCE POST  
 14" HEM N34°E 8.6 FT. MKD. E1/16S22BT & W.I.I. Y. TAG  
 10" HEM S58°W 32.4 FT. MKD. E1/16 S27 BT & W.I.I. Y. TAG
- ⑦ MARKED NEW BEARING TREES  
 65" DF S 65W 66.0 FT MKD 1/4 S 28 BT & W.I.I. Y. TAG  
 18" TWIN YEW N17E 41.8 FT MKD 1/4 S28 BT & W.I.I. Y. TAG  
 OLD BEARING TREES:  
 6" D.F. N60E 23 LK MISSING  
 9" D.F. N87W 14 LK MISSING