

05773

PAUL ESTERGARD

SECTION 30 T.14 S. R. 4 W. W. M.
BENTON COUNTY, OREGON

OCT. 1974

SCALE 1" = 200'

REGISTERED
PROFESSIONAL
LAND SURVEYOR

R.S. Castleberry

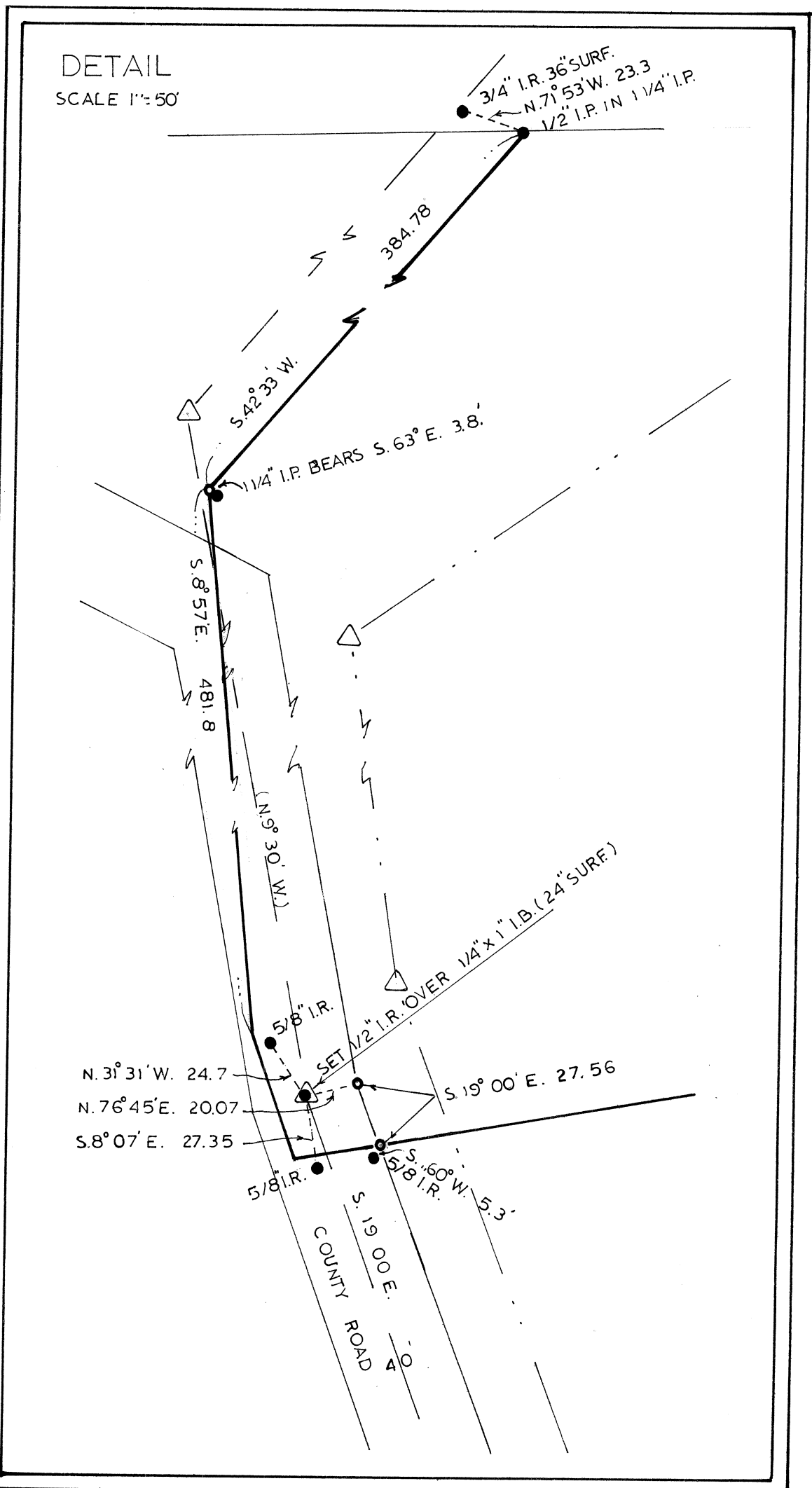
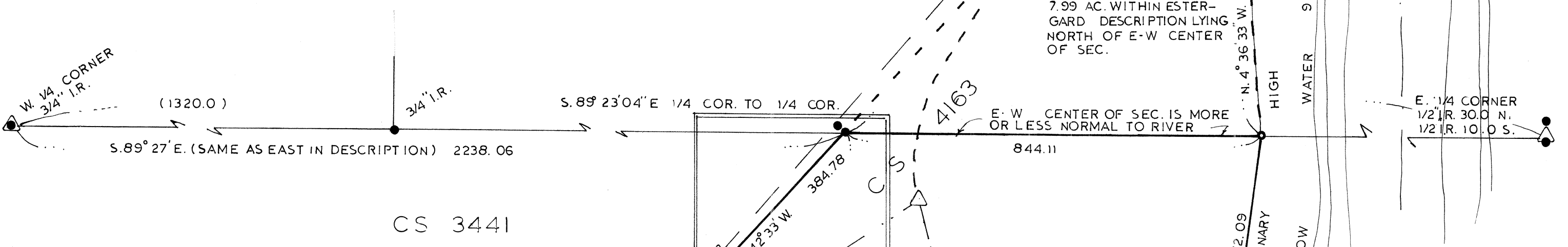
OREGON
JULY 9, 1968
R. S. CASTLEBERRY
684

LEGEND

- 1/2" IRON ROD SET
- MONUMENT FOUND
- ORIGINAL LOT BOUNDARY (1923 A.D.)
- ORIGINAL MEANDER LINE
- △ ORIGINAL GOV'T. CORNERS.

BEARINGS BASED ON C.S. 222

DEED 193 / 285



LOT 11 (22.54 AC.)

5773