

FOUND 1" PIPE (156.42 EAST OF 3112)  
 NORTH LINE RICHARD IRWIN DLC S1 (589°41'E 3762.26 FROM C.S. 119)  
 T135 R5W



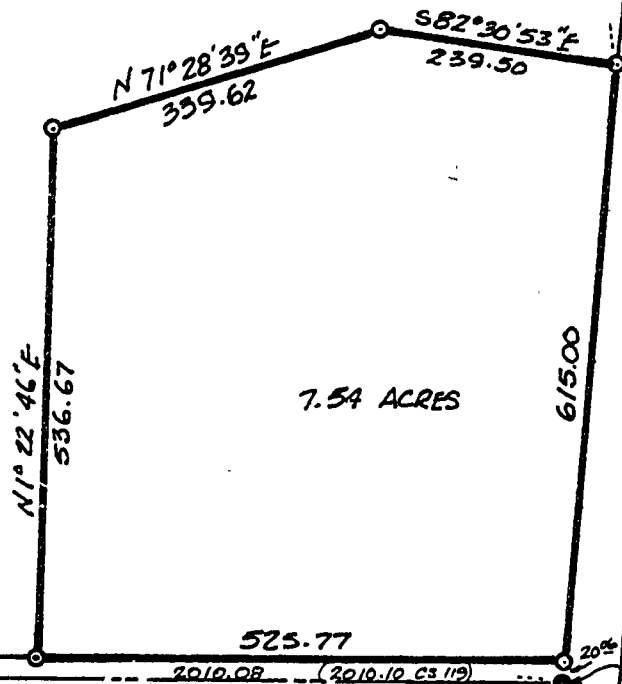
1/4" SHAFT ON R/W

CORVALLIS

892.58  
 HIGHWAY 99W

EAST LINE DLC S1  
 WEST LINE DLC 47

EAST LINE SOUTHERN PACIFIC RAILROAD



7.54 ACRES

1/8" PIPE @ ROAD TO EAST HWY RR

COUNTY ROAD 1302

2010.08 (2010.10 CS 119)  
 N 89° 59' 48" W

3/8" AXLE SHAFT @ COUNTY RD TO WEST HWY HIGHWAY

60

MONROE

1/8" IRON RODS SET BEARING FROM 99W R/W

05785

<b>SURVEY FOR CLARENCE VENELL</b> IN THE RICHARD IRWIN DLC S1 IN THE NE 1/4 OF SECTION 22, T135, R5W, W.M., BENTON COUNTY OR					REGISTERED PROFESSIONAL LAND SURVEYOR  <i>Tom O. McCullough</i>
McCULLOUGH, BRYANT & ASSOCIATES - CORVALLIS					
DRAWN TOM	DATE 10-30-74	SCALE 1" = 200'	BOOK 156	JOB 111-2	OREGON JULY 15, 1968 TOM O. McCULLOUGH 650