

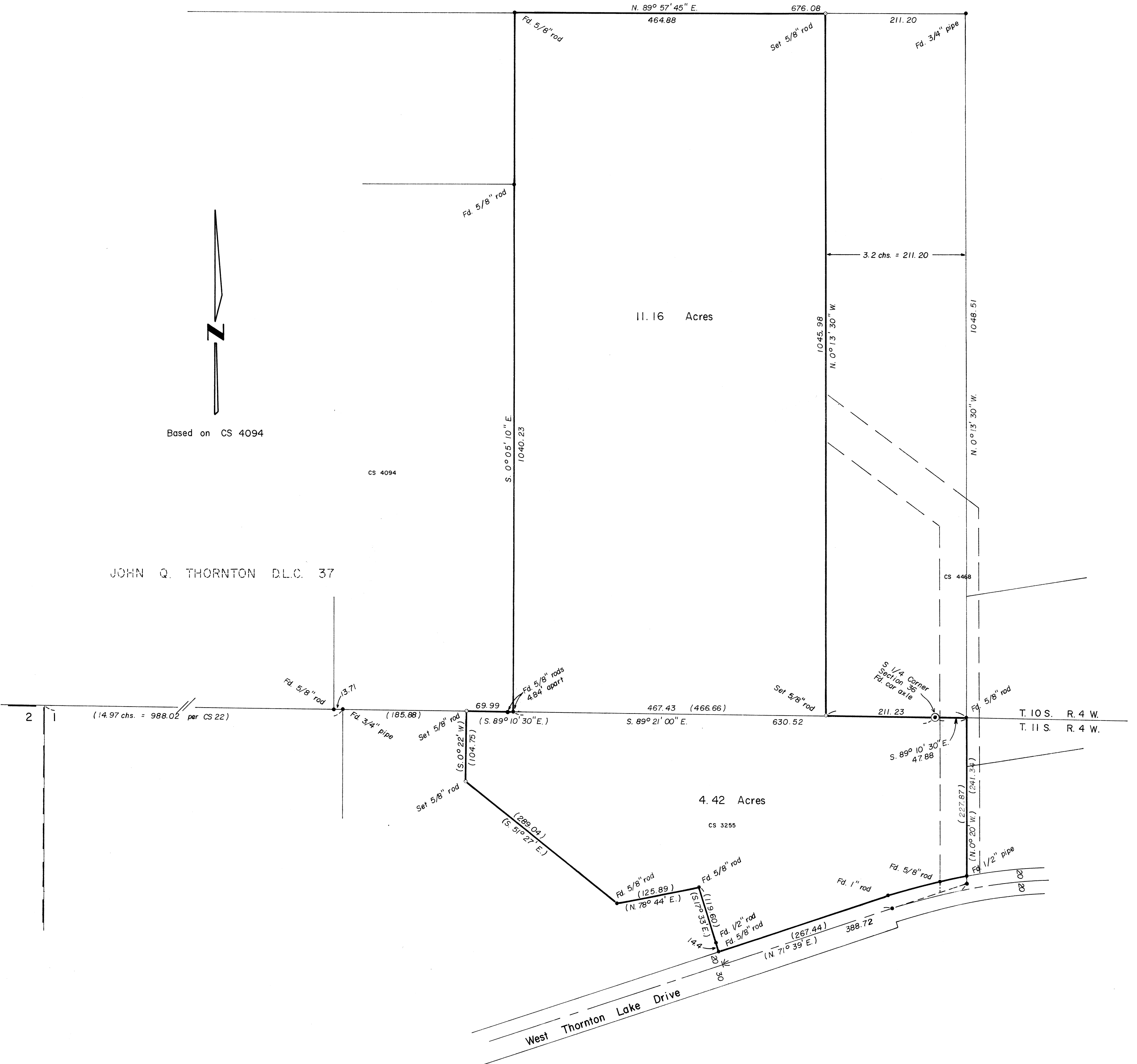
05805

# ELMER SALO

SW 1/4 SECTION 36, T.10 S., R. 4 W., W.M.  
NW 1/4 SECTION 1, T.11 S., R. 4 W., W.M.  
Benton County, Oregon

SCALE: 1" = 100'

JANUARY 2, 1975



REGISTERED  
PROFESSIONAL  
LAND SURVEYOR  
*Kenneth M. Wightman*  
OREGON  
JULY 17, 1970  
KENNETH M. WIGHTMAN II  
942

TIMBERLAND SERVICES, INC.  
1010 Airport Road P. O. Box 668  
Albany, Oregon 97321  
Telephone: (503) 926-9104  
LAND SURVEYING - ENGINEERING  
LAND USE PLANNING - ROADS  
FORESTRY CONSULTING

5805