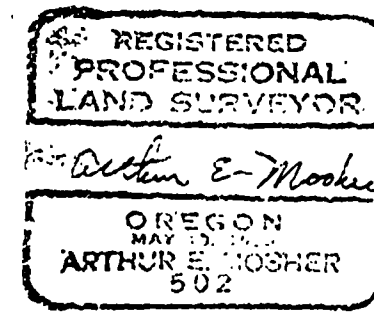


04813  
 SURVEY  
 for  
 WILLAMETTE INDUSTRIES, INC.  
 in  
 Section 33 T12S R6W W.M.  
 Benton County, Oregon  
 Surveyed 1/75-2/75

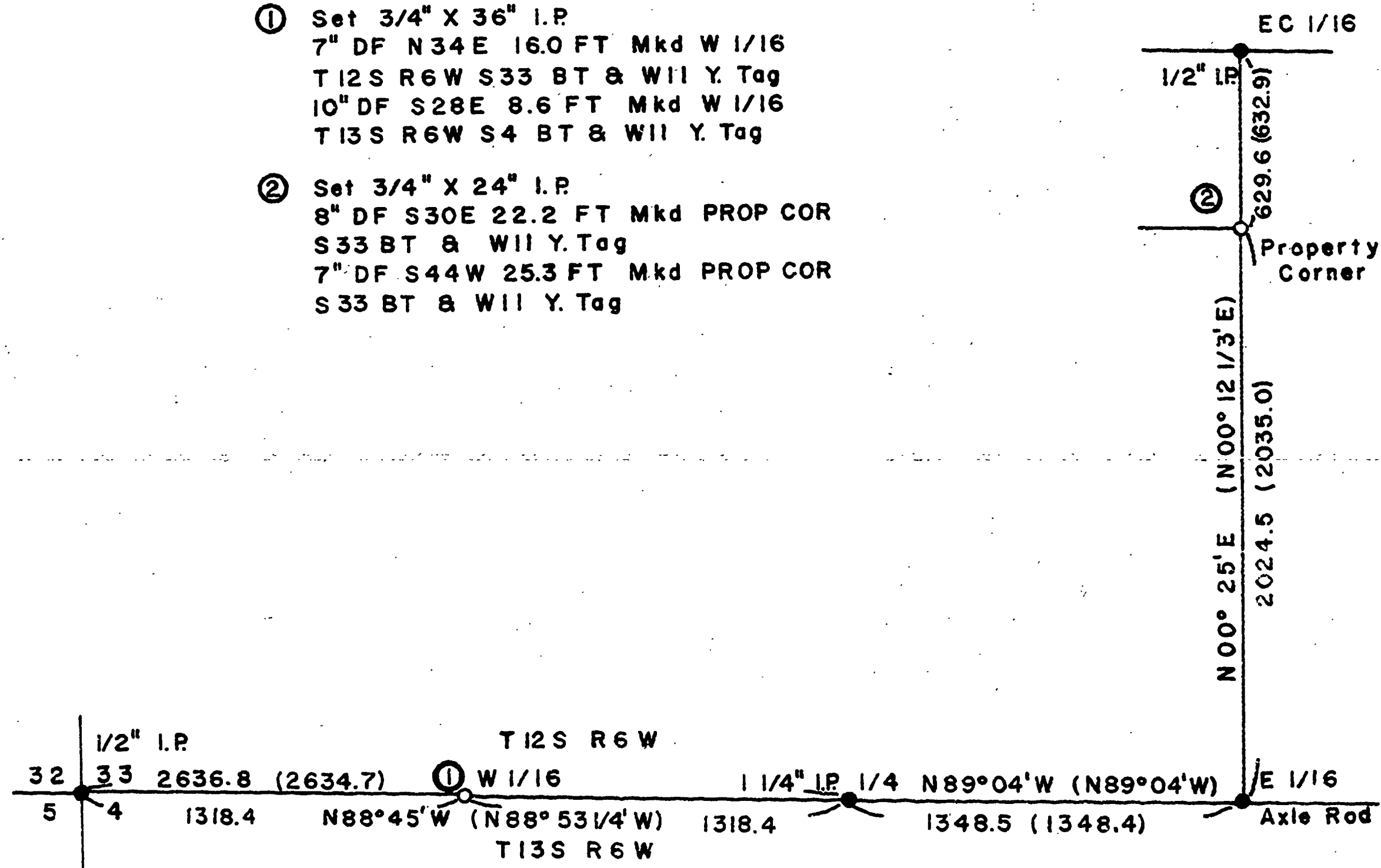
Scale: 1" = 400'  
 Corners Found ●  
 Corners Set ○  
 Record Bearing ( )  
 Record Distance ( )

Surveyed by:  
 Arthur E. Mosher  
 Thomas L. Parsons  
 Steve L. Villwock  
 Gary T. Johnston

Bearings based on C.S. No. 101 & 184



- ① Set 3/4" X 36" I.P.  
 7" DF N34E 16.0 FT Mkd W 1/16  
 T12S R6W S33 BT & W11 Y. Tag  
 10" DF S28E 8.6 FT Mkd W 1/16  
 T13S R6W S4 BT & W11 Y. Tag
- ② Set 3/4" X 24" I.P.  
 8" DF S30E 22.2 FT Mkd PROP COR  
 S33 BT & W11 Y. Tag  
 7" DF S44W 25.3 FT Mkd PROP COR  
 S33 BT & W11 Y. Tag



5846

5846

5846