

05855

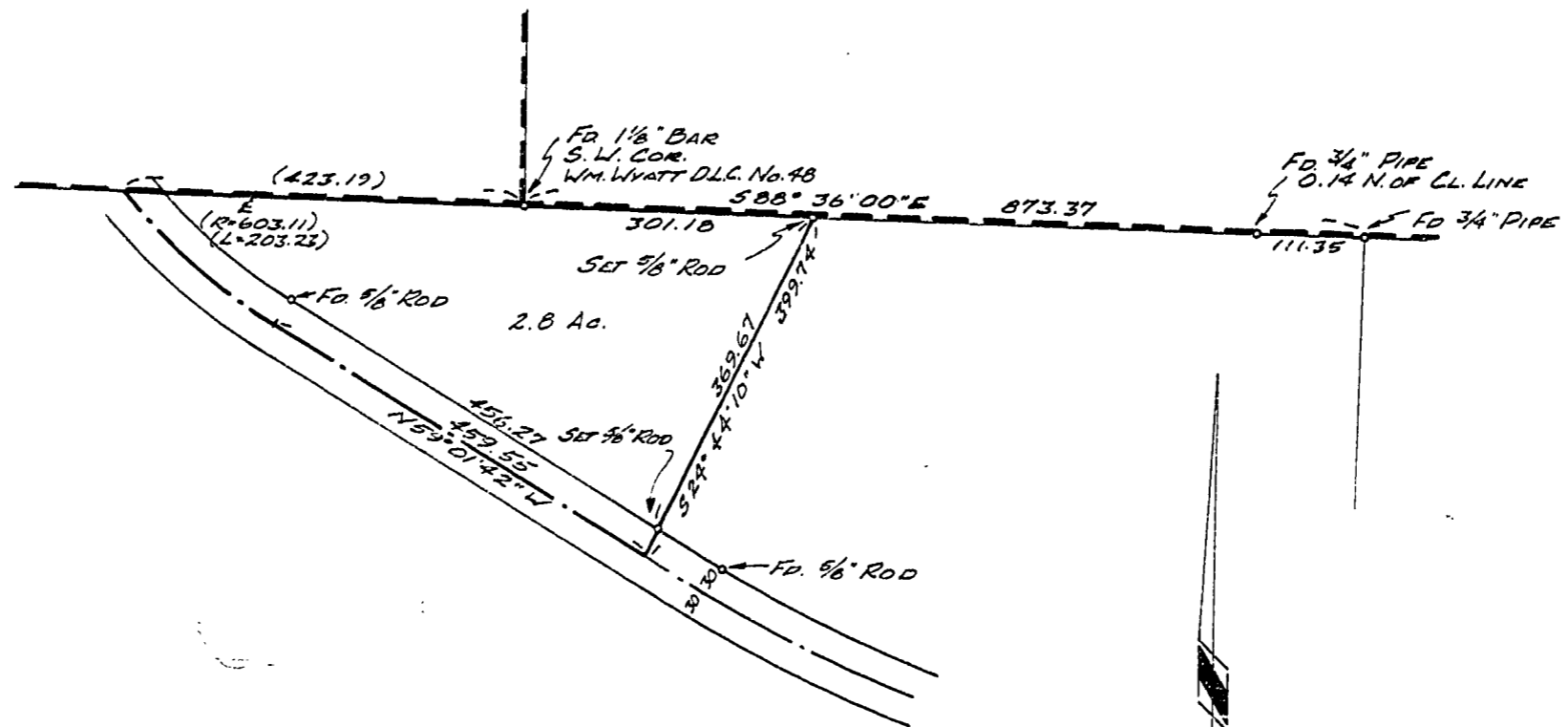
RECORD OF SURVEY

FOR EDWARD C. HOWARD

IN Section 2, Township 12 South, Range 6 West, W.M.

Benton County, Oregon 7 April, 1975

Scale: 1" = 200'



REGISTERED
PROFESSIONAL
LAND SURVEYOR

Nick A. Yinger

OREGON
JULY 12, 1966
NICK A. YINGER
876