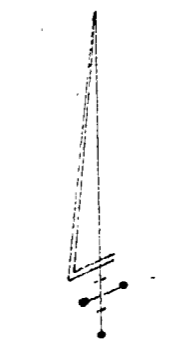
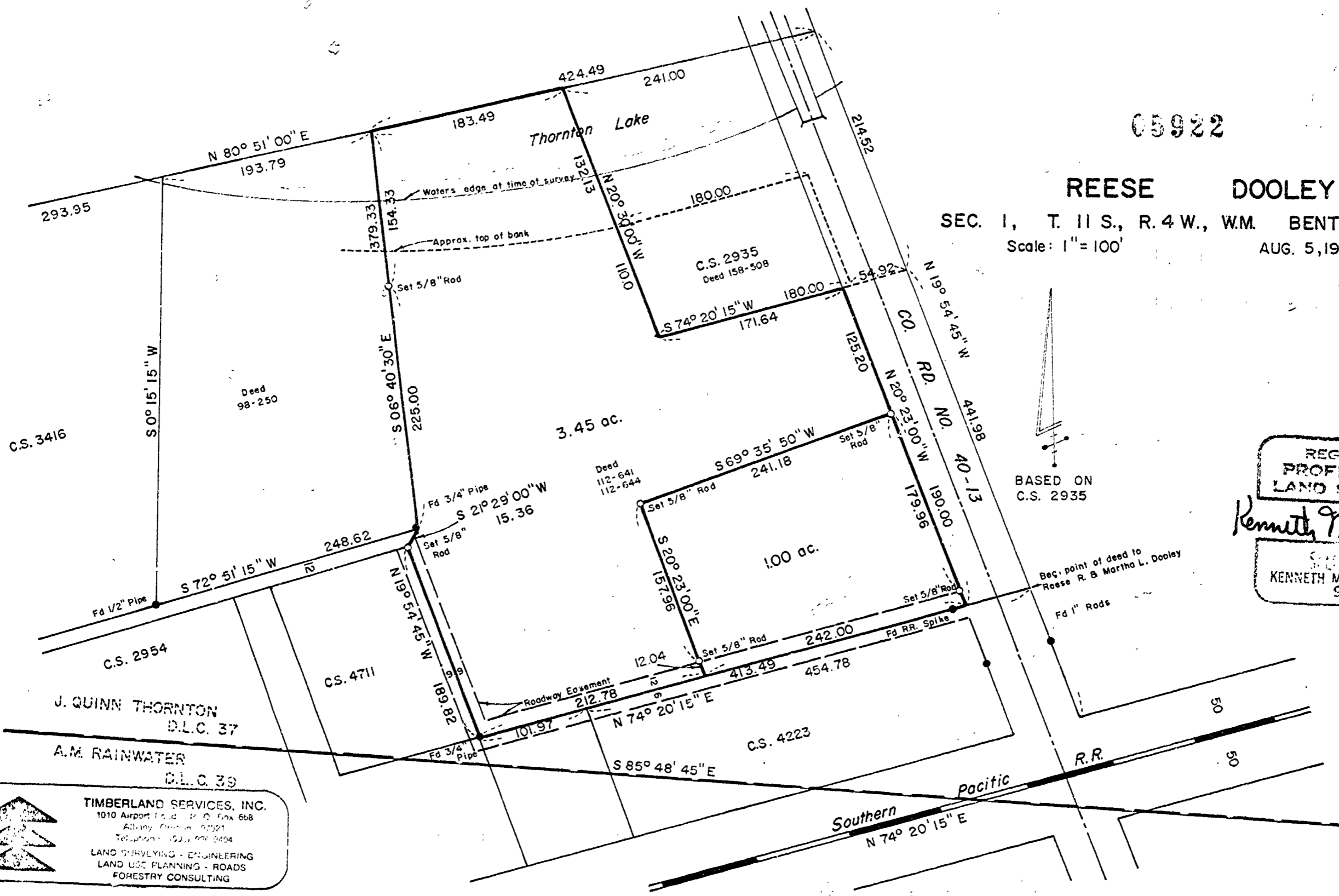


05922

REESE DOOLEY

SEC. 1, T. 11 S., R. 4 W., W.M. BENTON CO., ORE.
Scale: 1" = 100'
AUG. 5, 1975




BASED ON
C.S. 2935

REGISTERED
PROFESSIONAL
LAND SURVEYOR

Kenneth M. Wightman

NO. 942
KENNETH M. WIGHTMAN II
942

**TIMBERLAND SERVICES, INC.**
1010 Airport Blvd. P. O. Box 668
Astoria, Oregon 97101
Telephone: (503) 325-0404
LAND SURVEYING - ENGINEERING
LAND USE PLANNING - ROADS
FORESTRY CONSULTING

J. QUINN THORNTON
D.L.C. 37
A.M. RAINWATER
D.L.C. 39