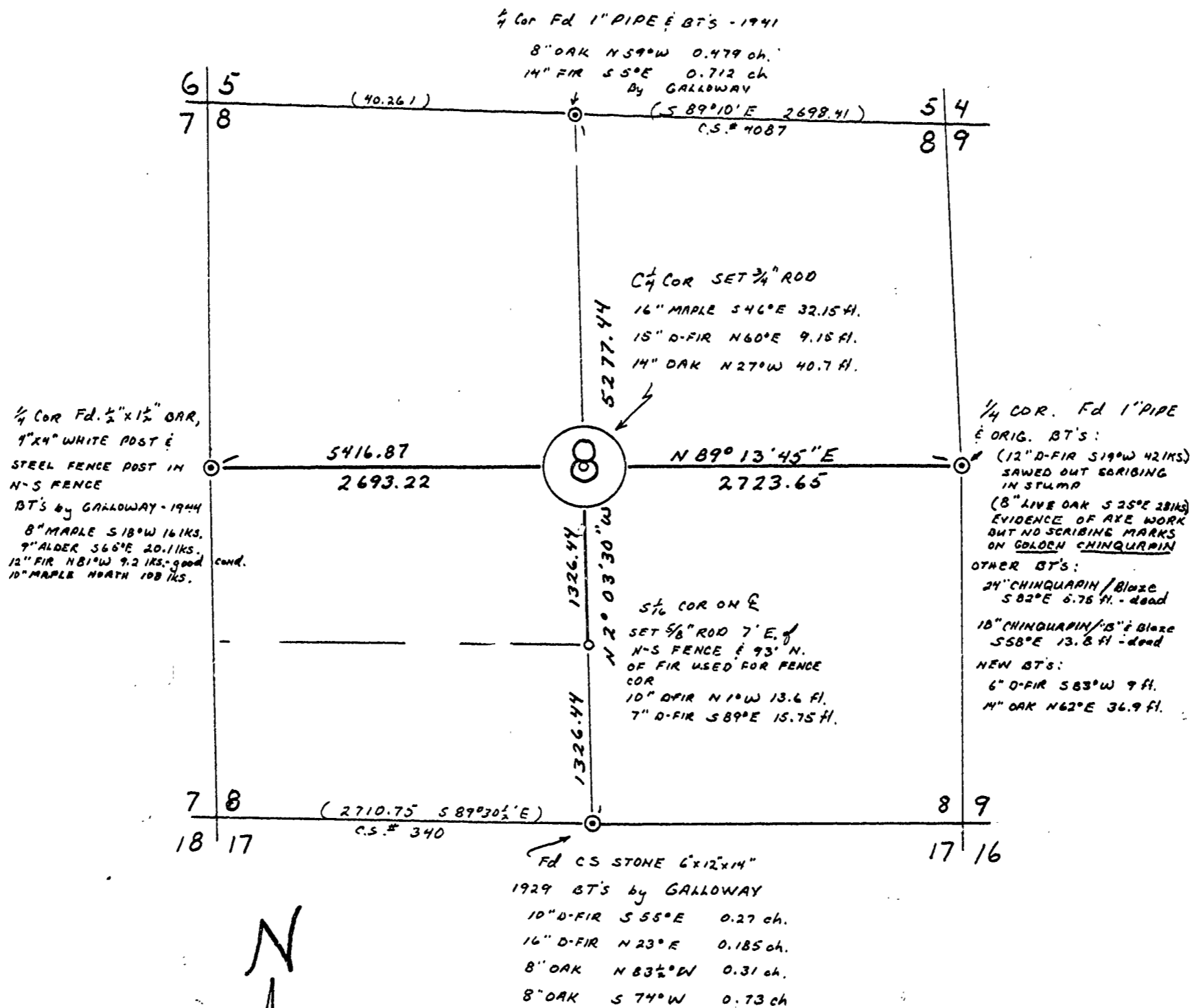


05949

**STARKER FORESTS**  
 SEC. 8, T.12S., R.6W., W.M.  
 BENTON COUNTY, ORE.  
 SCALE: 1" = 1000' SEPT 22, 1975

BERT W. UDELL RPE.# 230!  
 BY ARNOLD BRUBAKER R.L.S.# 992



BEARINGS BY SOLAR OBSERVATION

REGISTERED  
 PROFESSIONAL  
 LAND SURVEYOR  
 Arnold Brubaker  
 OREGON  
 JULY 13, 1973  
 ARNOLD BRUBAKER  
 992