

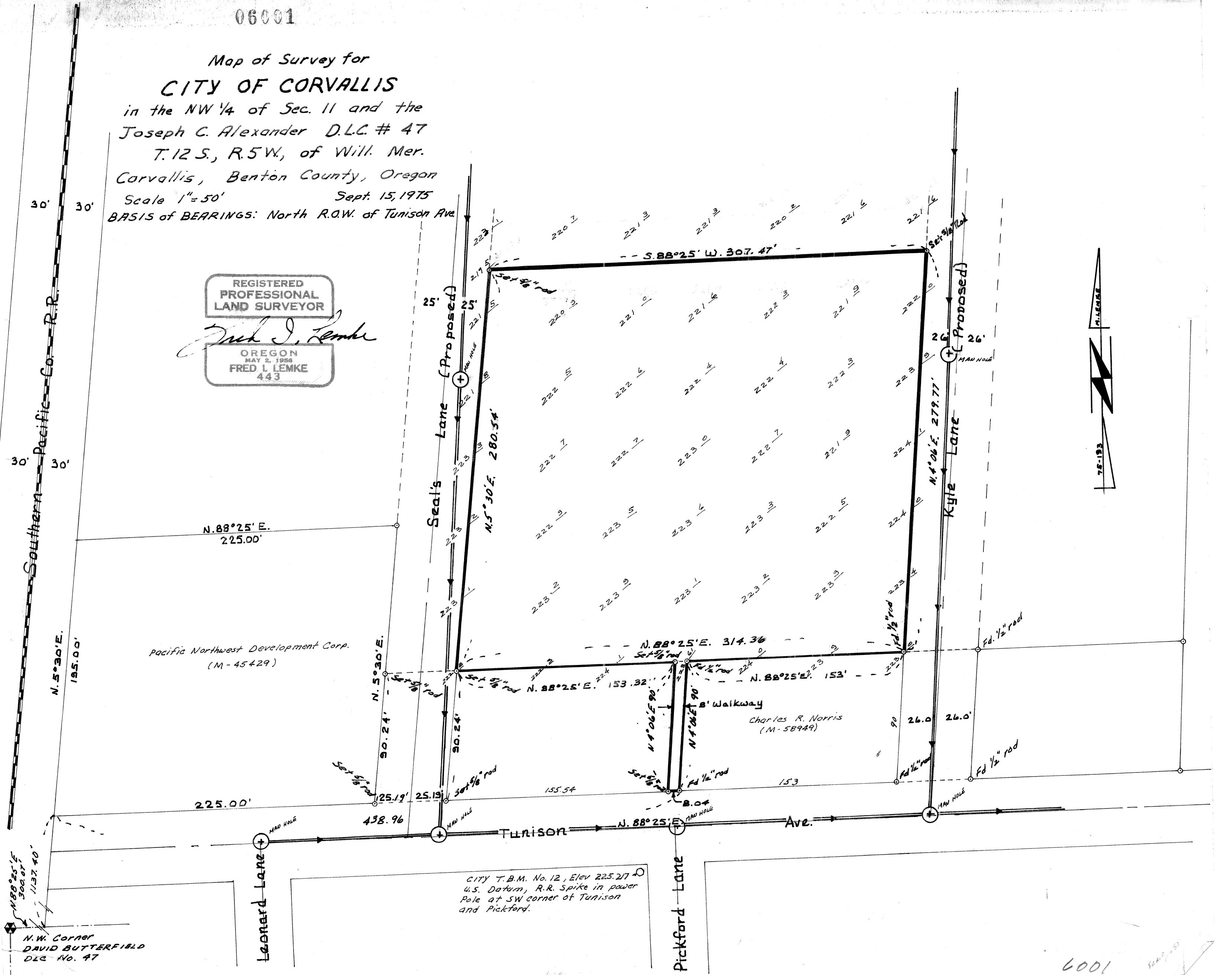
06001

Map of Survey for
CITY OF CORVALLIS
 in the NW 1/4 of Sec. 11 and the
 Joseph C. Alexander D.L.C. # 47
 T. 12 S., R. 5 W., of Will. Mer.
 Corvallis, Benton County, Oregon
 Scale 1"=50' Sept. 15, 1975
 BASIS of BEARINGS: North R.O.W. of Tunison Ave.

REGISTERED
 PROFESSIONAL
 LAND SURVEYOR

Fred J. Lemke

OREGON
 MAY 2, 1956
 FRED J. LEMKE
 443



Pacific Northwest Development Corp.
 (M-45429)

Charles R. Norris
 (M-58949)

CITY T.B.M. No. 12, Elev 225.27
 U.S. Datum, R.R. Spike in power
 Pole at SW corner of Tunison
 and Pickford.

N.W. Corner
 DAVID BUTTERFIELD
 D.L.C. No. 47