

06018

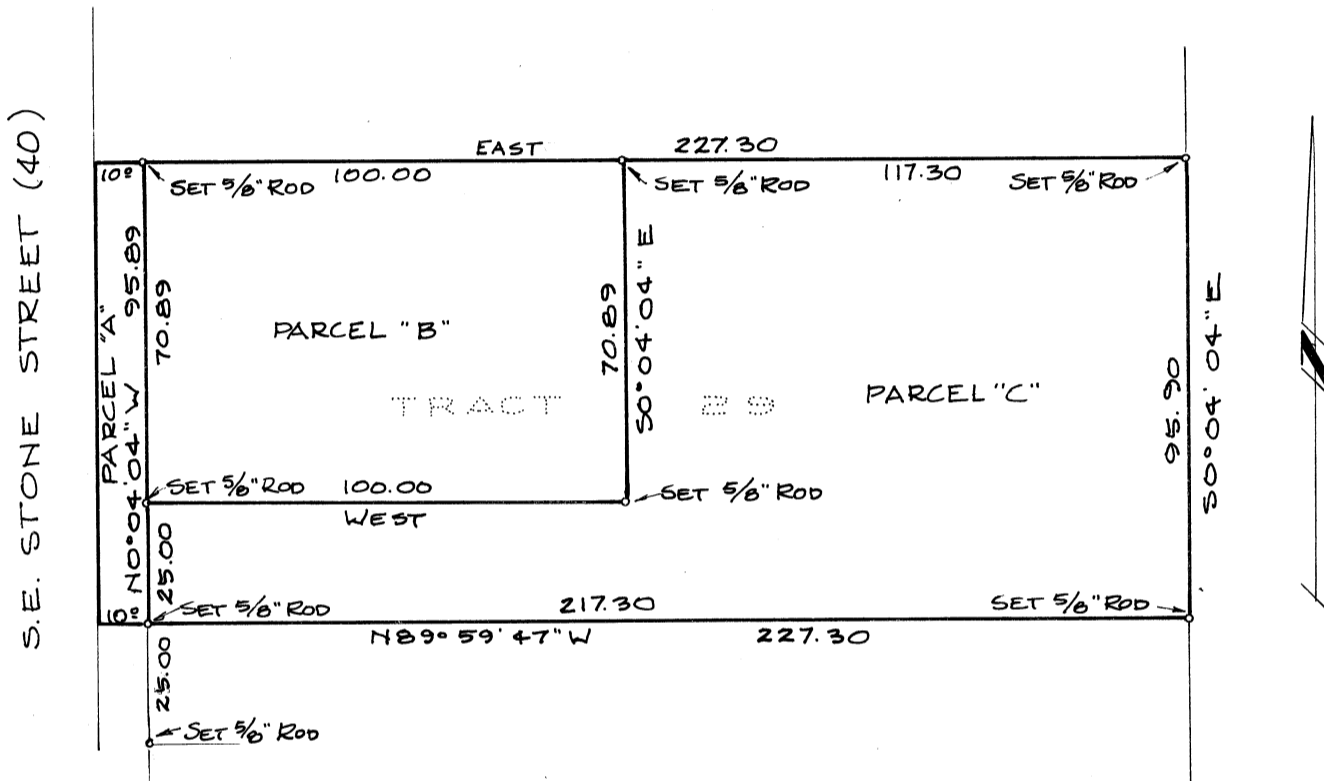
RECORD OF SURVEY

FOR JOHN P. BEARDSLEY & LEE GRANT

IN Tract 29, CARVER TRACTS

Corvallis, Benton County, Oregon

January 2, 1976 Scale: 1" = 40'



REGISTERED PROFESSIONAL LAND SURVEYOR

Nick A. Yinger

OREGON
JULY 12, 1920
NICK A. YINGER
876

MINOR LAND PARTITION APPROVED

Planning Director

Date

City Engineer

Date