

06031

# RON WILLAMSON

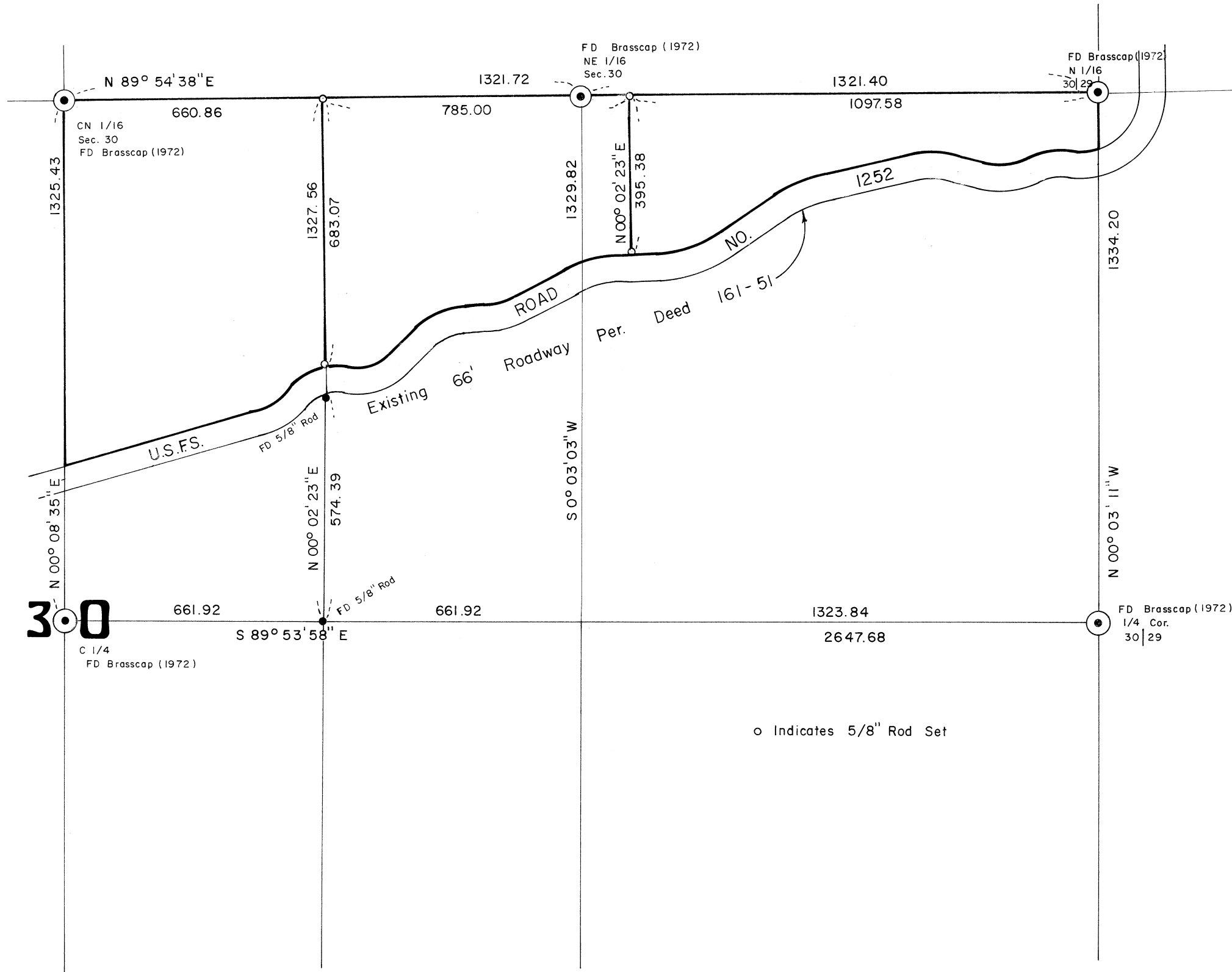
NE. 1/4 SEC. 30 T. 12 S. R. 6 W  
BENTON COUNTY, OREGON

Scale: 1" = 300' December 1975

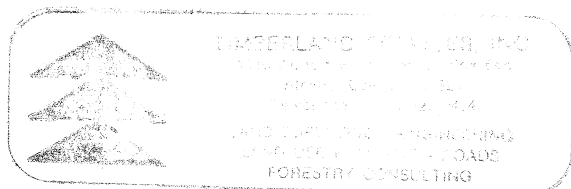
6031



Based On  
C.S. 5407



1209



REGISTERED  
PROFESSIONAL  
LAND SURVEYOR

*Kenneth M. Wightman*

KENNETH M. WIGHTMAN II

6031

6031