

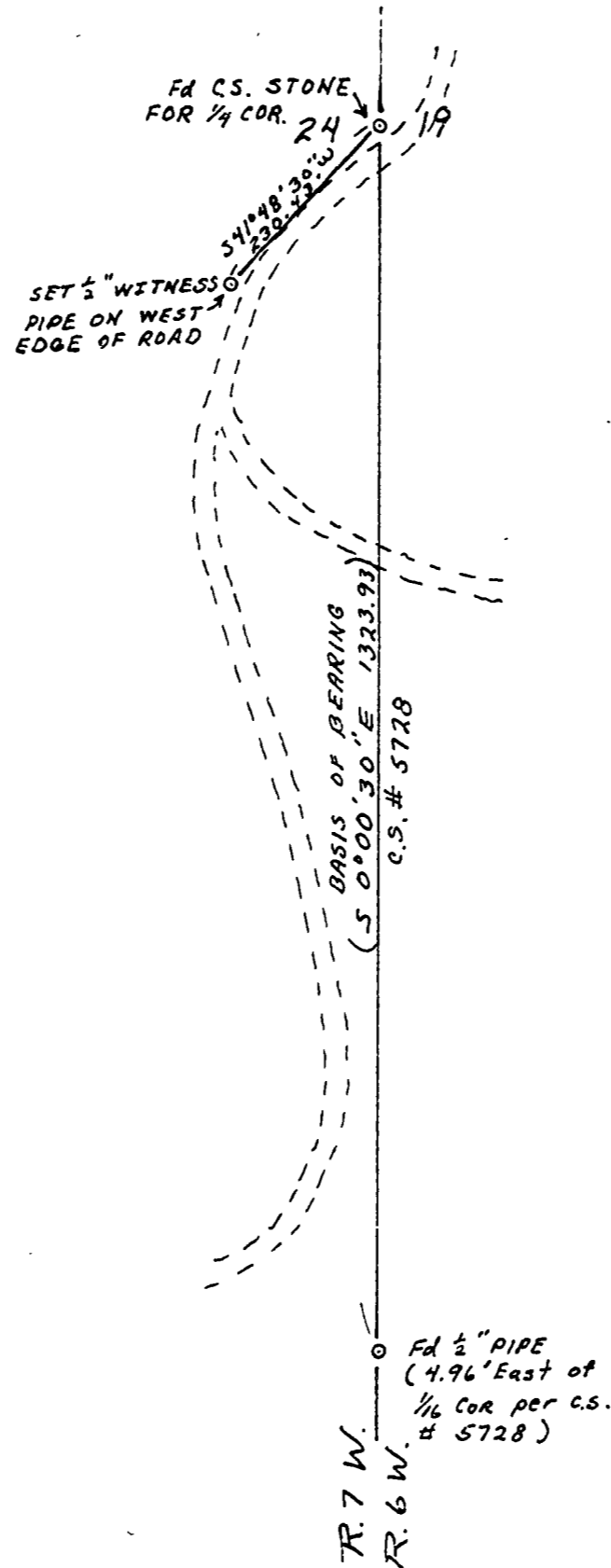
06036

STARKEE FORESTS

SEC 24 T.11S., R.7W., W.M.  
BENTON COUNTY, ORE.

SCALE : 1" = 200' MARCH 12, 1976

BERT W. UDELL R.P.E. #2301  
BY ARNOLD BRUBAKER R.L.S. #992



REGISTERED  
PROFESSIONAL  
LAND SURVEYOR

*Arnold Brubaker*

OREGON  
JULY 13, 1973  
ARNOLD BRUBAKER  
992