

06099

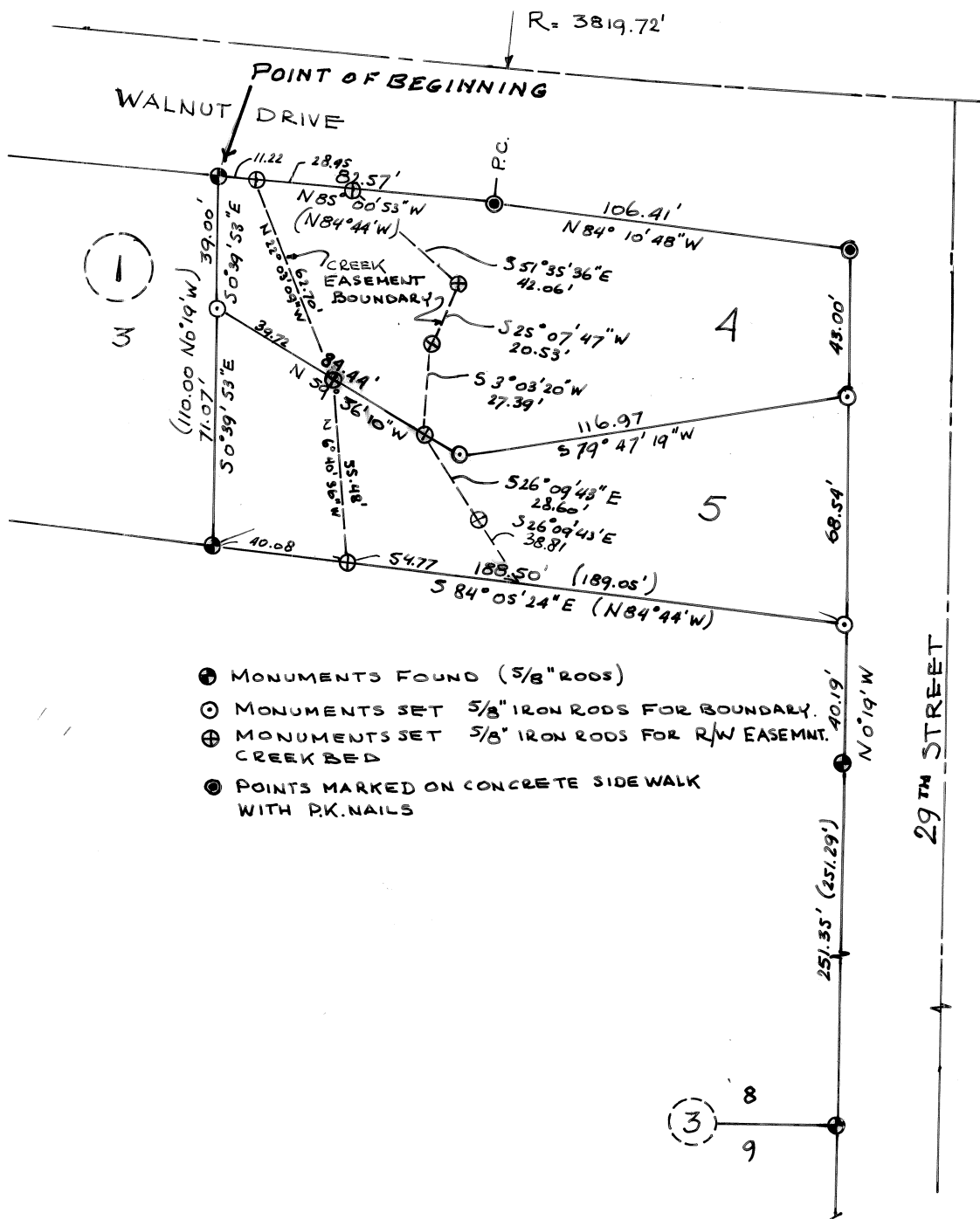
SURVEY OF LOTS 4 & 5
 IN BLOCK 1 OF KINGS VIEW ADD'N
 IN THE JAMES L. MULKEY D.L.C. No 63
 N.W. 1/4 SECTION 27, T.11 S., R.5.W. W.M. CORVALLIS, BENTON CNTY
 OREGON

FOR
 ECOSIGN INC.

SCALE 1" = 50'

JUNE 15, 1976

THIS SURVEY IS A REPLAT OF LOTS 4 & 5 BLOCK 1



- ⊕ MONUMENTS FOUND (5/8" RODS)
- ⊙ MONUMENTS SET 5/8" IRON RODS FOR BOUNDARY.
- ⊕ MONUMENTS SET 5/8" IRON RODS FOR R/W EASEMENT. CREEK BED
- ⊙ POINTS MARKED ON CONCRETE SIDE WALK WITH P.K. NAILS

BASIS FOR BEARINGS
 FND MONUMENTS ALONG
 WEST SIDE OF 29TH STR.
 AS PLATTED IN KINGS
 VIEW ADDITION N 0° 19' W.

