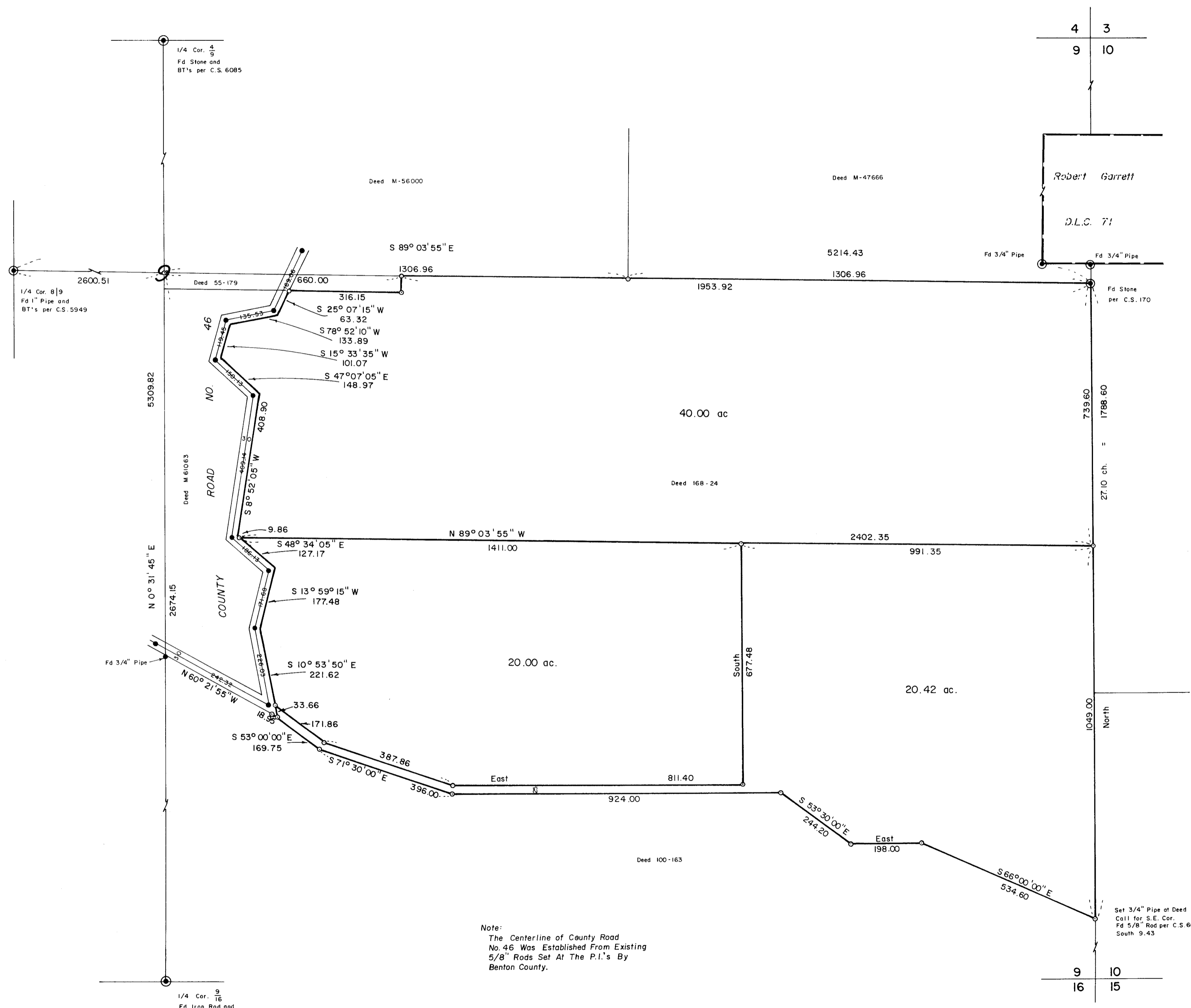


06118

GLENN WITHAM
S.E. 1/4, SEC. 9., T.12 S., R. 2 W., W.M.
BENTON COUNTY, OREGON
Scale: 1" = 200' July 1976



Note:
The Centerline of County Road
No. 46 Was Established From Existing
5/8" Rods Set At The P.I.'s By
Benton County.



Based On East
Line of Section 9

o Indicates 5/8" Rod Set

TIMBERLAND SERVICES, INC.
1010 Airport Blvd. P. O. Box 668
Astoria, Oregon 97103
Telephone: (503) 325-2444
LAND SURVEYING - ENGINEERING
LAND USE PLANNING - ROADS
FORESTRY CONSULTING

REGISTERED
PROFESSIONAL
LAND SURVEYOR
Kenneth M. Wightman
CRESON
JULY 17, 1970
KENNETH M. WIGHTMAN II
942

6118