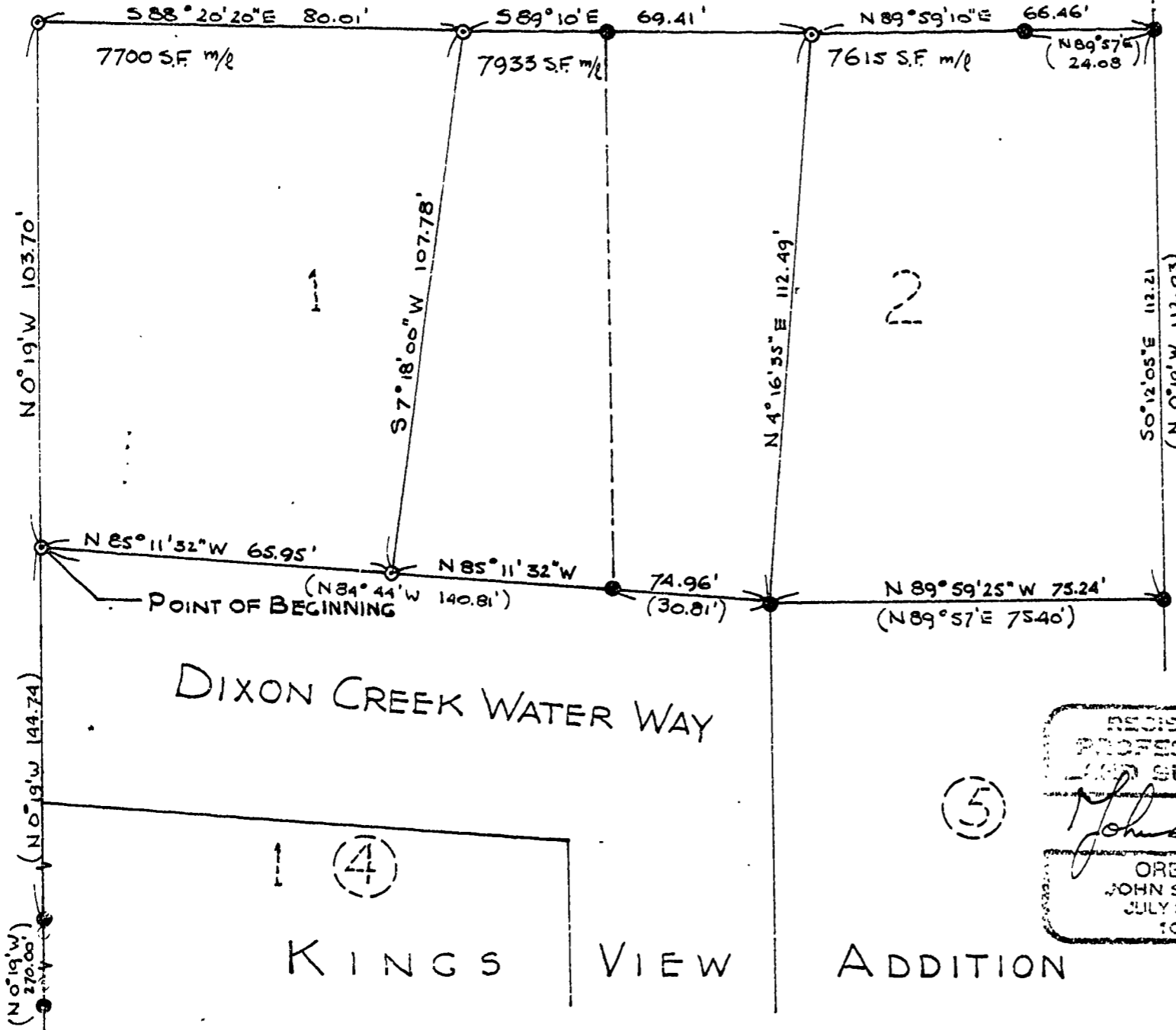


NW CORNER
JAMES MULKEY
D.L.C. No. 63

N 89° 57' E 978.26'

WALNUT BLVD.

REPLATTING SURVEY
OF LOTS 1 AND 2 BLOCK 5 IN
KINGS VIEW ADDITION TO CORVALLIS
BENTON COUNTY OREGON IN
NE 1/4 OF NW 1/4 OF SEC 27, T11S, R5W, W.M.
(JAMES MULKEY, D.L.C. No. 63.)



LEGEND

- MONUMENTS SET 5/8" I.R.
- MONUMENTS FND 5/8" I.R.
- () RECORDED PLAT VALUES

BASIS FOR BEARINGS
FOUND MONUMENTS
ALONG EAST SIDE 29TH ST.
AS PLATTED IN KINGS VIEW ADDN
N 0° 19' W

N.W. 29TH STR.

DIXON CREEK WATER WAY

KINGS VIEW ADDITION

REGISTERED
PROFESSIONAL
LAND SURVEYOR
John Seaders
OREGON
JOHN SEADERS
JULY 22, 1974
1014

6121

NE 1/4 OF NW 1/4, SEC. 27, T11S, R5W, W.M.	
ECOSIGN	
SCALE 1" = 30'	DRAWN J.S.
DATE 22 JUL 76	CHECK'D: J.S.
M.S.S. INC. CORVALLIS, ORE ENGINEERS, PLANNERS, SURVEYORS	
JOB NUMBER C-50	