

Benton Co. Surveyors Office  
C.S. FILE NO. 06224  
FILING DATE 7-15-78  
FILE SIZE 18"

BENTON COUNTY SURVEY OFFICE

RECORD OF SURVEY FOR BENTON COUNTY  
T. 11 S., R. 5 W. W.B. & M.  
S 1/2 SEC. 33, S.W. 1/4 SEC. 34  
BENTON COUNTY, OREGON

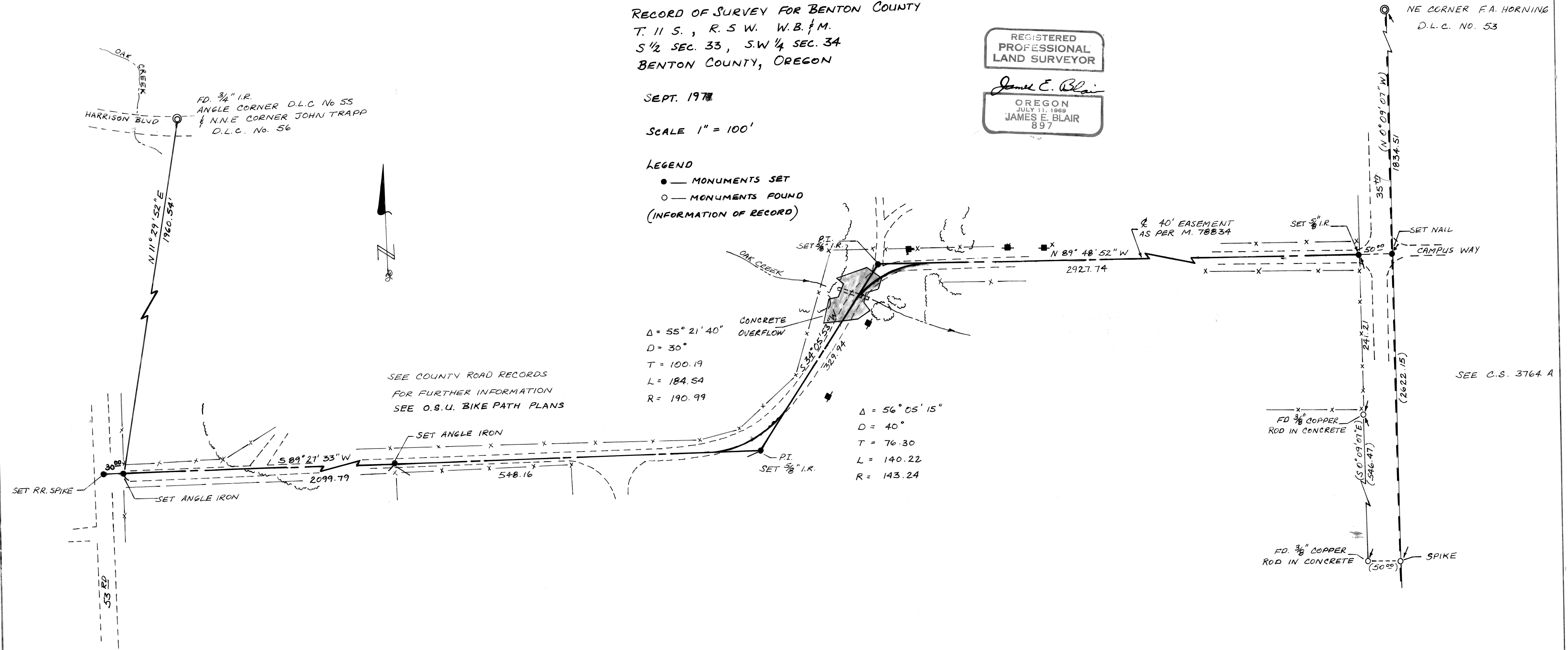
SEPT. 1978

SCALE 1" = 100'

LEGEND  
● MONUMENTS SET  
○ MONUMENTS FOUND  
(INFORMATION OF RECORD)

REGISTERED PROFESSIONAL LAND SURVEYOR

JAMES E. BLAIR  
OREGON  
JULY 11, 1968  
JAMES E. BLAIR  
897



SEE COUNTY ROAD RECORDS  
FOR FURTHER INFORMATION  
SEE O.B.U. BIKE PATH PLANS

Δ = 55° 21' 40"  
D = 30'  
T = 100.19  
L = 184.54  
R = 190.99

Δ = 56° 05' 15"  
D = 40'  
T = 76.30  
L = 140.22  
R = 143.24

SEE C.S. 3764 A