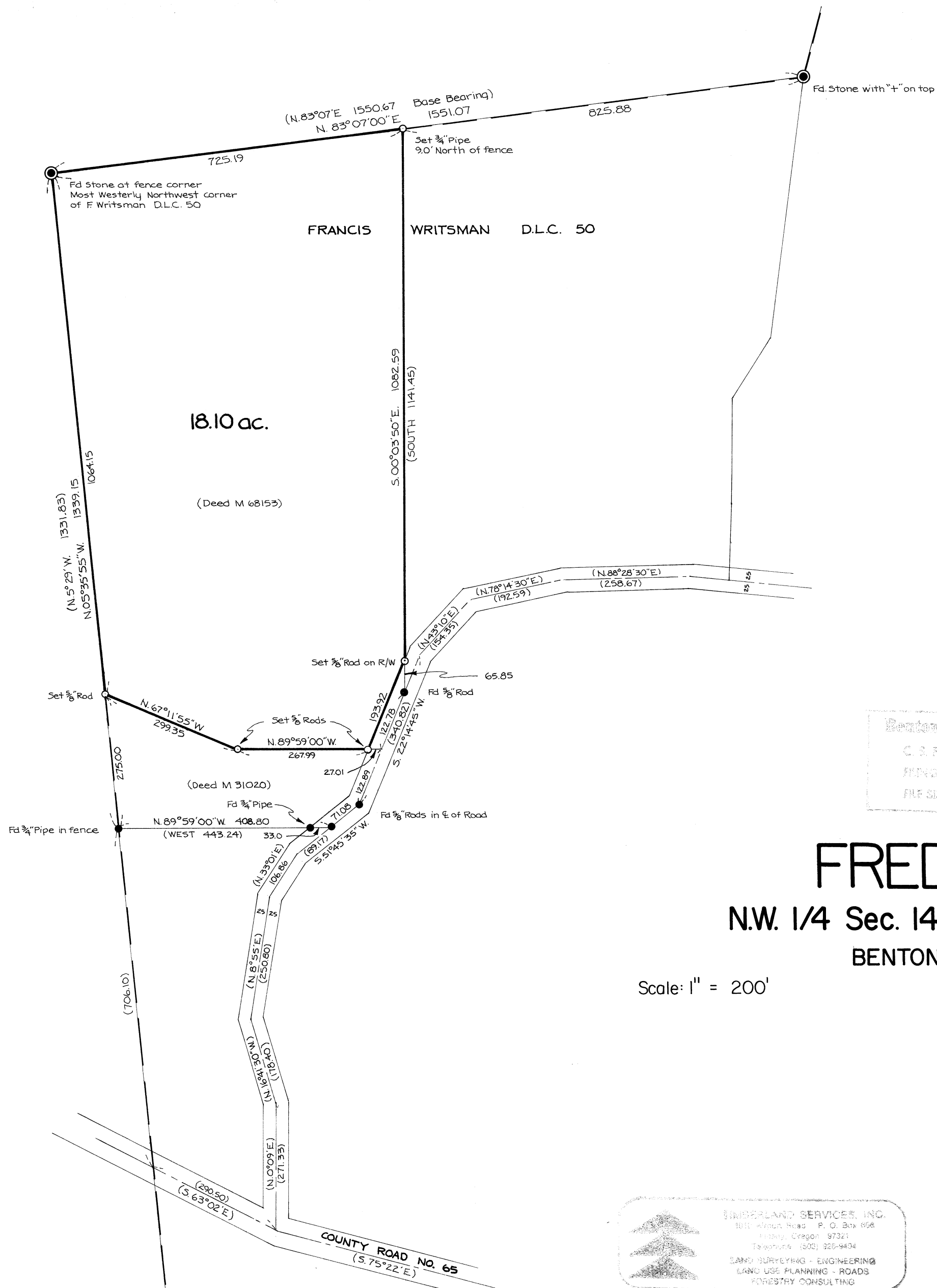


6260

6260

6260



NOTE:
 Significant error was found in the east and west lines of tract 7 of C.S. 4286. The monuments in the field were used to establish the parcel boundaries and also that of M 31020

Based on C.S. 4286

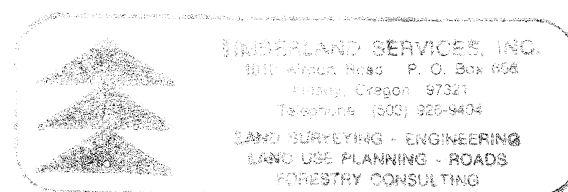
Benton Co. Surveyors Office
 C. S. FILE NO. 02761
 FILING DATE _____
 FILE SIZE _____

FRED BLAKE

N.W. 1/4 Sec. 14, T. 10 S., R. 5 W., W.M.
 BENTON COUNTY, OREGON

Scale: 1" = 200'

February 2, 1977



6260

6260