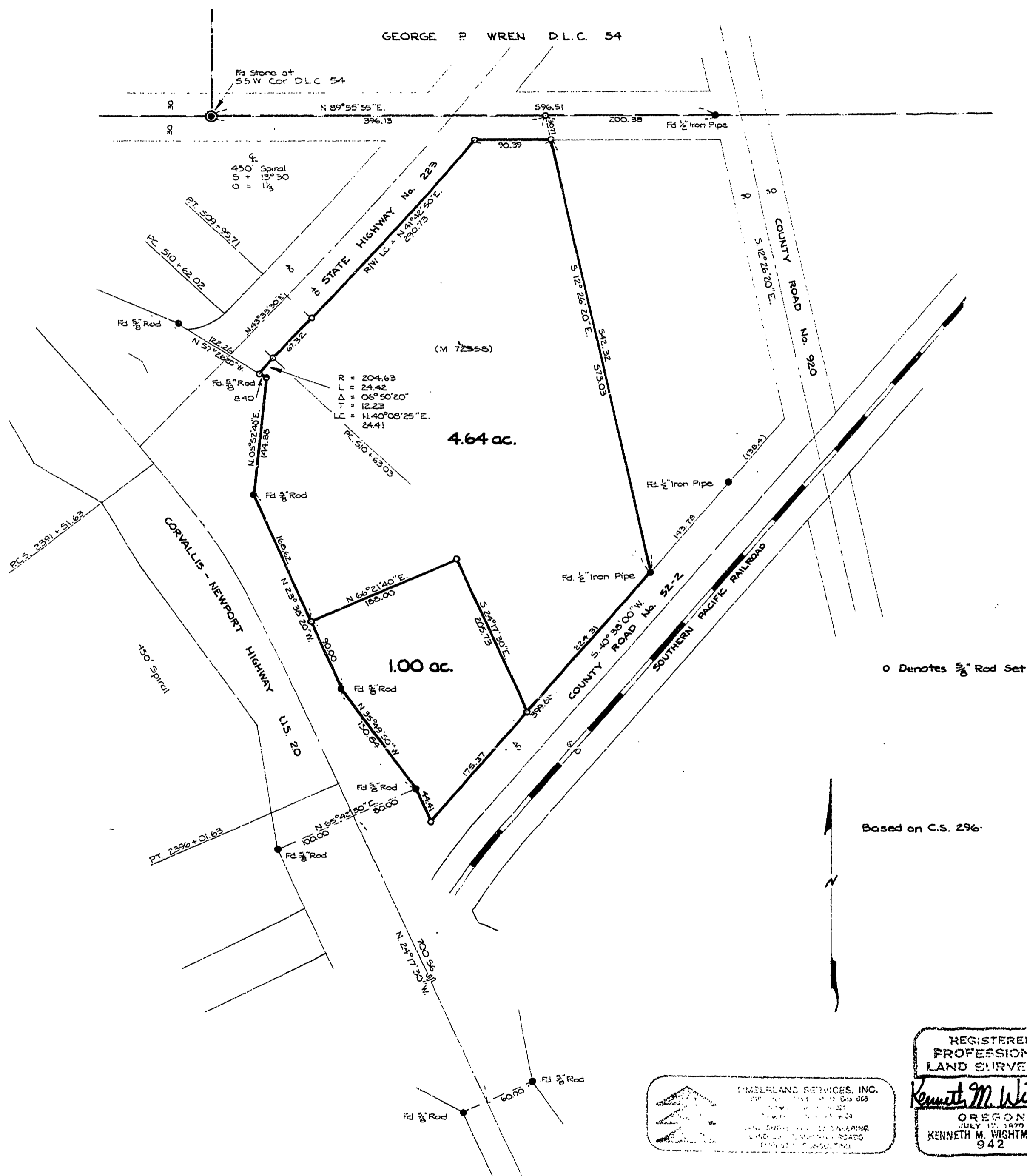


**TOM TURNER**  
 NW 1/4 Sec. 28, T. 11 S., R. 6 W., WM.  
 BENTON COUNTY, OREGON

Benton Co. Surveyors Office  
 C. S. FILE NO. 06281  
 FILING DATE 2-26-77  
 FILE SIZE 15

Scale: 1" = 100

February 26, 1977



O Denotes 5/8" Rod Set

Based on C.S. 296

LANDERLAND SERVICES, INC.  
 200 S. W. 1st St. Corvallis, OR 97331  
 (503) 754-1234  
 SURVEYING AND ENGINEERING  
 LAND AND CONSTRUCTION  
 PROJECT CONSULTING

REGISTERED  
 PROFESSIONAL  
 LAND SURVEYOR  
*Kenneth M. Wightman*  
 OREGON  
 JULY 17, 1970  
 KENNETH M. WIGHTMAN II  
 942

6281

6281

6281