

STARKER FORESTS

SEC 34, T.10S., R.7W., W.M.

BENTON COUNTY, OREGON

SCALE: 1" = 1000'

MARCH 8, 1977

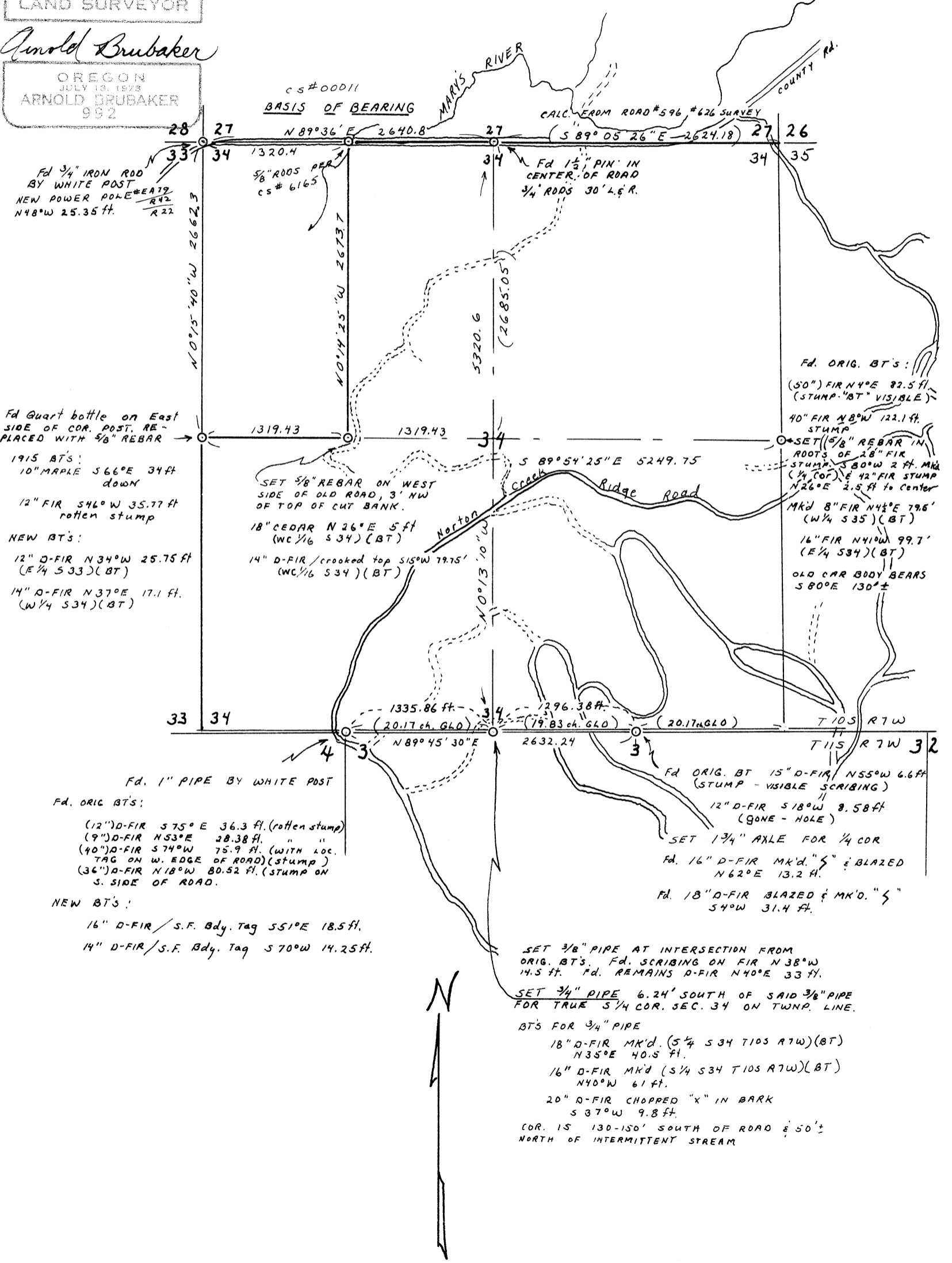
BERT W. UDELL R.P.E. #2301
BY ARNOLD BRUBAKER R.L.S.#992

06324

REGISTERED
PROFESSIONAL
LAND SURVEYOR

Arnold Brubaker

OREGON
JULY 13, 1973
ARNOLD BRUBAKER
992



Fd 3/4" IRON ROD
BY WHITE POST
NEW POWER POLE #EA19
R42
N48°W 25.35 ft.
R22

Fd Quart bottle on East
SIDE OF COR. POST. RE-
PLACED WITH 5/8" REBAR

1915 BT'S:
10" MAPLE S66°E 34 ft
down
12" FIR S46°W 35.77 ft
rotten stump

NEW BT'S:
12" D-FIR N34°W 25.75 ft
(E 1/4 S33)(BT)
14" D-FIR N37°E 17.1 ft.
(W 1/4 S34)(BT)

Fd. 1" PIPE BY WHITE POST

Fd. ORIG BT'S:
(12") D-FIR S75°E 36.3 ft. (rotten stump)
(9") D-FIR N53°E 28.38 ft. " "
(40") D-FIR S74°W 75.9 ft. (WITH LOC.
TAG ON W. EDGE OF ROAD)(stump)
(36") D-FIR N18°W 80.52 ft. (STUMP ON
S. SIDE OF ROAD.

NEW BT'S:
16" D-FIR / S.F. Bdy. Tag S51°E 18.5 ft.
14" D-FIR / S.F. Bdy. Tag S70°W 14.25 ft.

SET 5/8" REBAR ON WEST
SIDE OF OLD ROAD, 3' NW
OF TOP OF CUT BANK.

18" CEDAR N26°E 5 ft
(WC 1/16 S34)(BT)

14" D-FIR / crooked top S15°W 79.75'
(WC 1/16 S34)(BT)

Fd. ORIG. BT'S:
(50") FIR N4°E 82.5 ft.
(STUMP "BT" VISIBLE)
40" FIR N8°W 122.1 ft.
STUMP
SET (5/8") REBAR IN
ROOTS OF 28" FIR
STUMP. S80°W 2 ft. MK'd
(1/4 COR) & 42" FIR STUMP
N26°E 2.5 ft to center
MK'd 8" FIR N41°E 79.5'
(W 1/4 S35)(BT)
16" FIR N41°W 99.7'
(E 1/4 S34)(BT)
OLD CAR BODY BEARS
S80°E 130°±

Fd ORIG. BT 15" D-FIR N55°W 6.6 ft
(STUMP - VISIBLE SCRIBING)
12" D-FIR S18°W 8.58 ft
(GONE - HOLE)
SET 1 3/4" AXLE FOR 1/4 COR
Fd. 16" D-FIR MK'd. "S" & BLAZED
N62°E 13.2 ft.
Fd. 18" D-FIR BLAZED & MK'd. "S"
S4°W 31.4 ft.

SET 3/8" PIPE AT INTERSECTION FROM
ORIG. BT'S. Fd. SCRIBING ON FIR N38°W
14.5 ft. Fd. REMAINS D-FIR N40°E 33 ft.

SET 3/4" PIPE 6.24' SOUTH OF SAID 3/8" PIPE
FOR TRUE S 1/4 COR. SEC. 34 ON TWP. LINE.

BT'S FOR 3/4" PIPE
18" D-FIR MK'd. (S 1/4 S34 T10S R7W)(BT)
N35°E 40.5 ft.
16" D-FIR MK'd (S 1/4 S34 T10S R7W)(BT)
N40°W 61 ft.
20" D-FIR CHOPPED "X" IN BARK
S37°W 9.8 ft.
COR. IS 130-150' SOUTH OF ROAD & 50'±
NORTH OF INTERMITTENT STREAM