

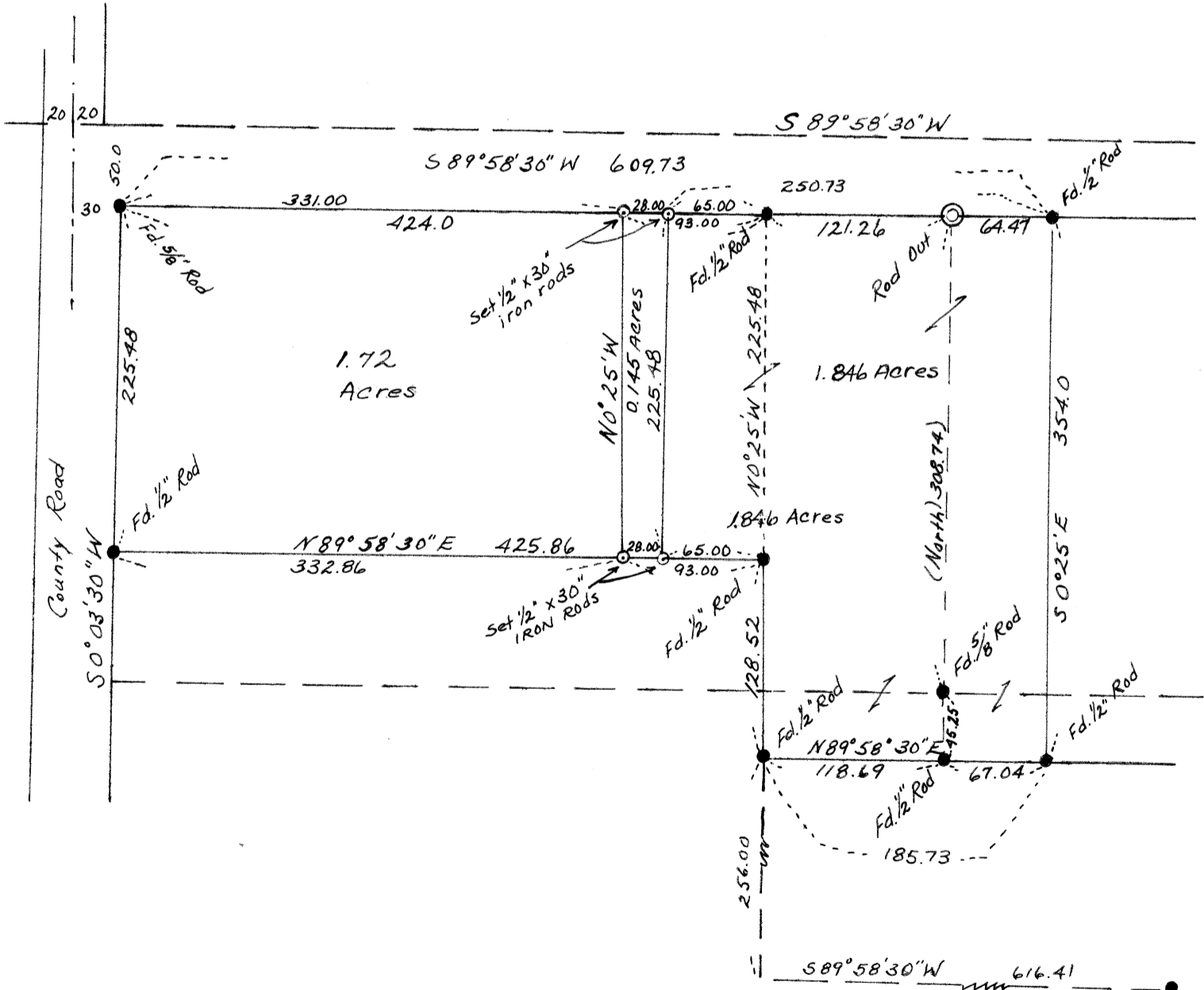
DAVID Y. ETCHART  
 NE 1/4 SEC. 27, T10S, R4W, W.M.  
 BENTON CO., OREGON

SCALE 1" = 100'

APRIL 15, 1977



Bearings From  
 C.S. 5614



REGISTERED PROFESSIONAL  
 ENGINEER  
 4185  
*James W. Prochnau*  
 OREGON  
 OCT 4, 1957  
 JAMES W. PROCHNAU

5/8" Rod  
 NW Corner  
 M-29718