

Fd. 1" Bolt

2394.09'

95.78' N 13° 18' 30" W
 144.20' N 00° 48' 30" E
 480.74' 336.54'

S 40° 45' W 24.35'

ARC = R = 280'
 R = 175.93'

ARC = R = 220'
 R = 138.23'

ARC = R = 205'
 R = 132.39'

ARC = R = 265'
 R = 171.13'

PARCEL A

PARCEL B

WYNDOCHEE DRIVE
 N 39° 45' E 262.39'
 N 39° 45' E 250.22'

S 89° 40' 30" E 4881.89'

441.80'

Fd. 5/8" rod
 N 06° 03' W
 23.24'

S 76° 00' W 159.50'

N 00° 11' 20" E 391.62'

976.49' N 00° 11' 20" E 1603.19'

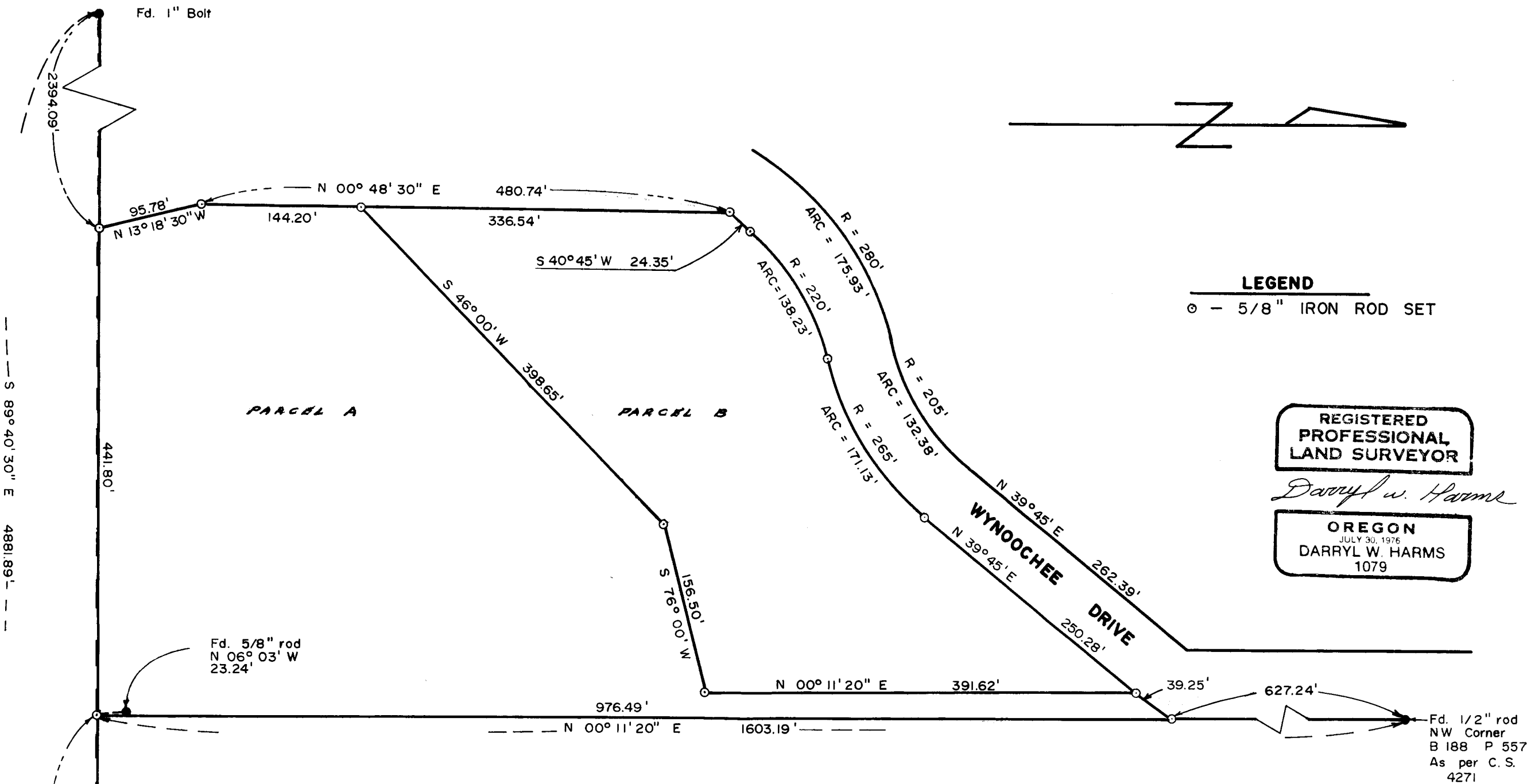
39.25' 627.24'

Fd. 1/2" rod
 NW Corner
 B 188 P 557
 As per C. S.
 4271

2046.00'

Fd. 1" pipe
 NE Corner
 Luke Mulkey
 D.L.C. No. 58

Benton Co. Surveyors Office
 C. S. FILE NO. 00356
 FILING DATE 5-21-77
 FILE SIZE 14"



Fd. 1" Bolt

2394.09'

N 00° 48' 30" E 480.74'
 N 13° 18' 30" W 95.78'
 144.20' 336.54'

S 40° 45' W 24.35'

ARC = 138.23' R = 220'
 ARC = 175.93' R = 280'
 ARC = 132.38' R = 205'
 ARC = 171.13' R = 265'

PARCEL A

PARCEL B

WYNOOCHEE DRIVE

S 89° 40' 30" E 4881.89'

441.80'

Fd. 5/8" rod
 N 06° 03' W
 23.24'

S 76° 00' W 156.50'

N 00° 11' 20" E 391.62'

N 00° 11' 20" E 976.49'

N 00° 11' 20" E 1603.19'

39.25' 627.24'

Fd. 1/2" rod
 NW Corner
 B 188 P 557
 As per C.S.
 4271

BEARINGS BASED ON NORTH LINE
 D. L. C. No. 58

2046.00'

Fd. 1" pipe
 NE Corner
 Luke Mulkey
 D.L.C. No. 58

Benton Co. Surveyors Office
 C. S. FILE NO. 00350
 FILING DATE 5-21-77
 FILE SIZE 18'

Greg Vincent
BENTON COUNTY PLANNING OFFICIAL DATE 2/21/2019