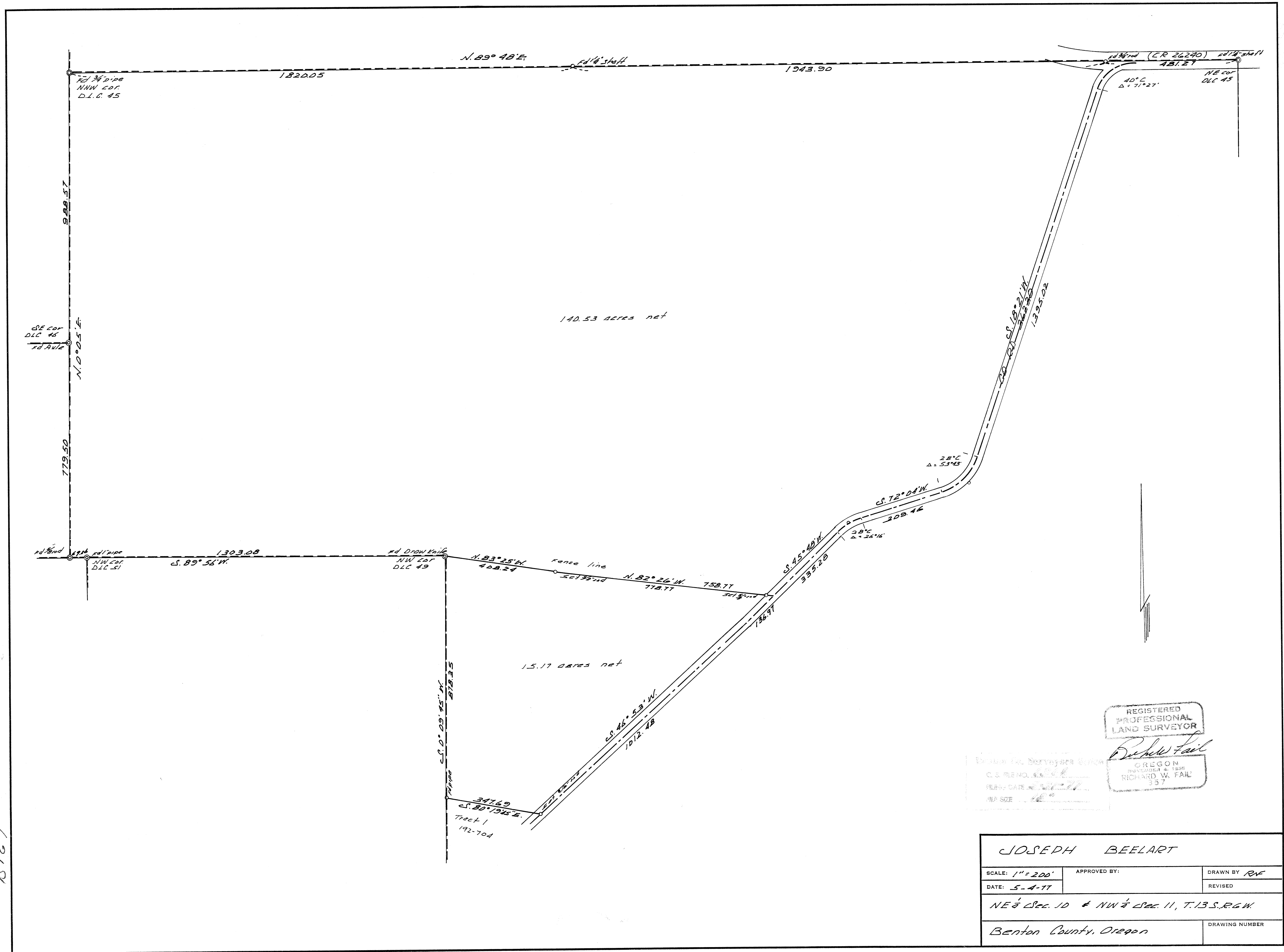


6368

6368

6368



REGISTERED PROFESSIONAL LAND SURVEYOR

RICHARD W. FAIL  
OREGON  
PROFESSIONAL LAND SURVEYOR  
NOVEMBER 4, 1988  
RICHARD W. FAIL  
357

JOSEPH BEELART		
SCALE: 1" = 200'	APPROVED BY:	DRAWN BY: RWF
DATE: 5-4-77		REVISED:
NE 1/4 Sec. 10 & NW 1/4 Sec. 11, T.13S., R.6W.		
Benton County, Oregon		DRAWING NUMBER: