

COUNTY OF BENTON, OREGON
 C.S. NO. 6094
 FILM NO. 101147
 FILM SIZE 8x11

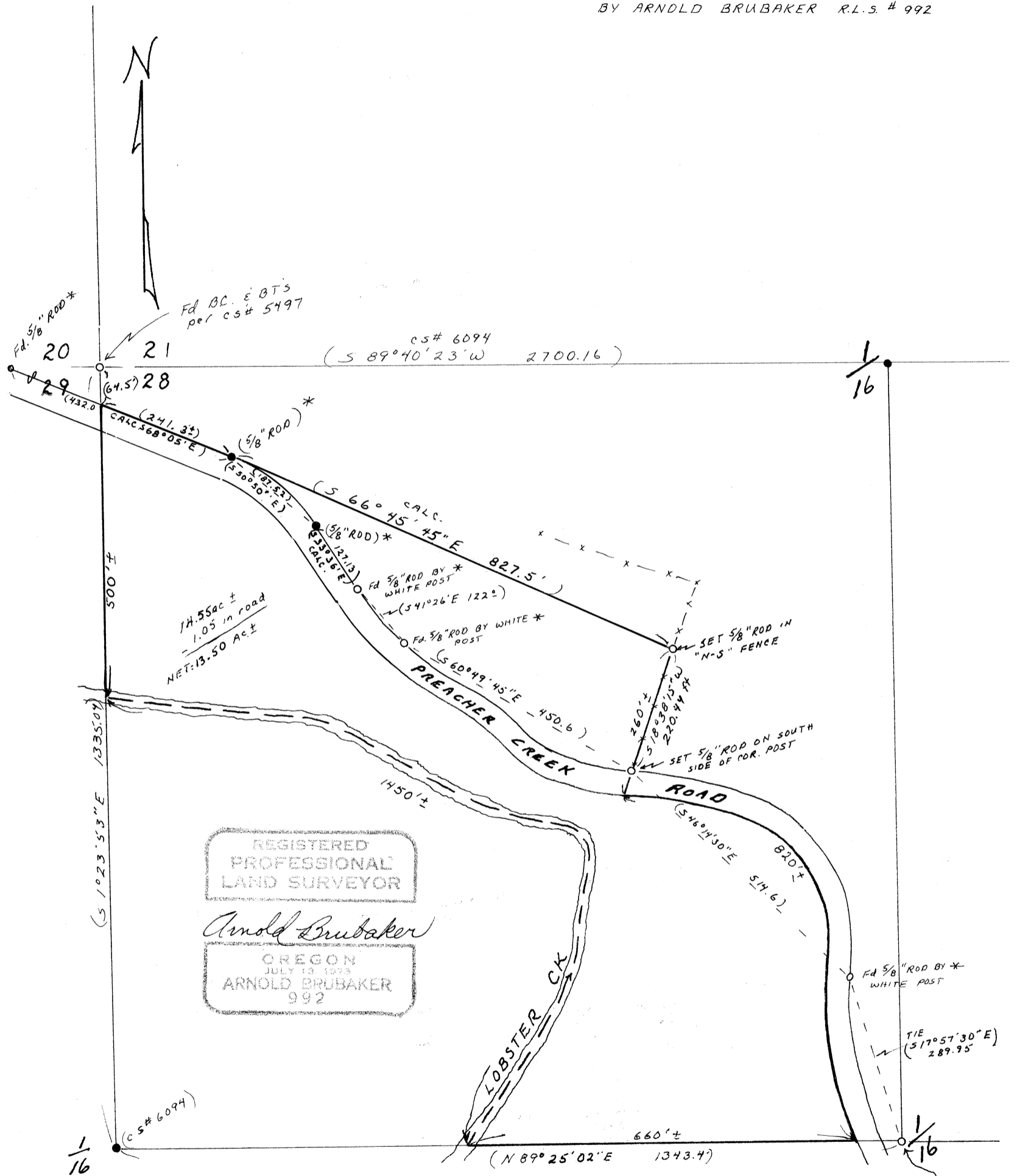
STARKER FORESTS

NW 1/4, NW 1/4, SEC. 28, T.14S., R.9W.
 BENTON COUNTY, ORE.

SCALE: 1" = 200' AUG. 5, 1977

BASED ON CS# 6094

BERT W. UDELL R.P.E. # 2301
 BY ARNOLD BRUBAKER R.L.S. # 992



* NOTE: The 5/8" IRON RODS FOUND ALONG THE NORTH SIDE OF "PREACHER CK. ROAD" ARE NOT NECESSARILY THE OFFICIAL R/W MARKERS. THE OFFICIAL R/W IS TO BE ESTABLISHED SOMETIME IN THE NEAR FUTURE ACCORDING TO BENTON COUNTY SURVEYOR'S OFFICE PERSONNEL

Fd. B.C. & BT's
 per CS# 6094
 NW 1/6 SEC. 28