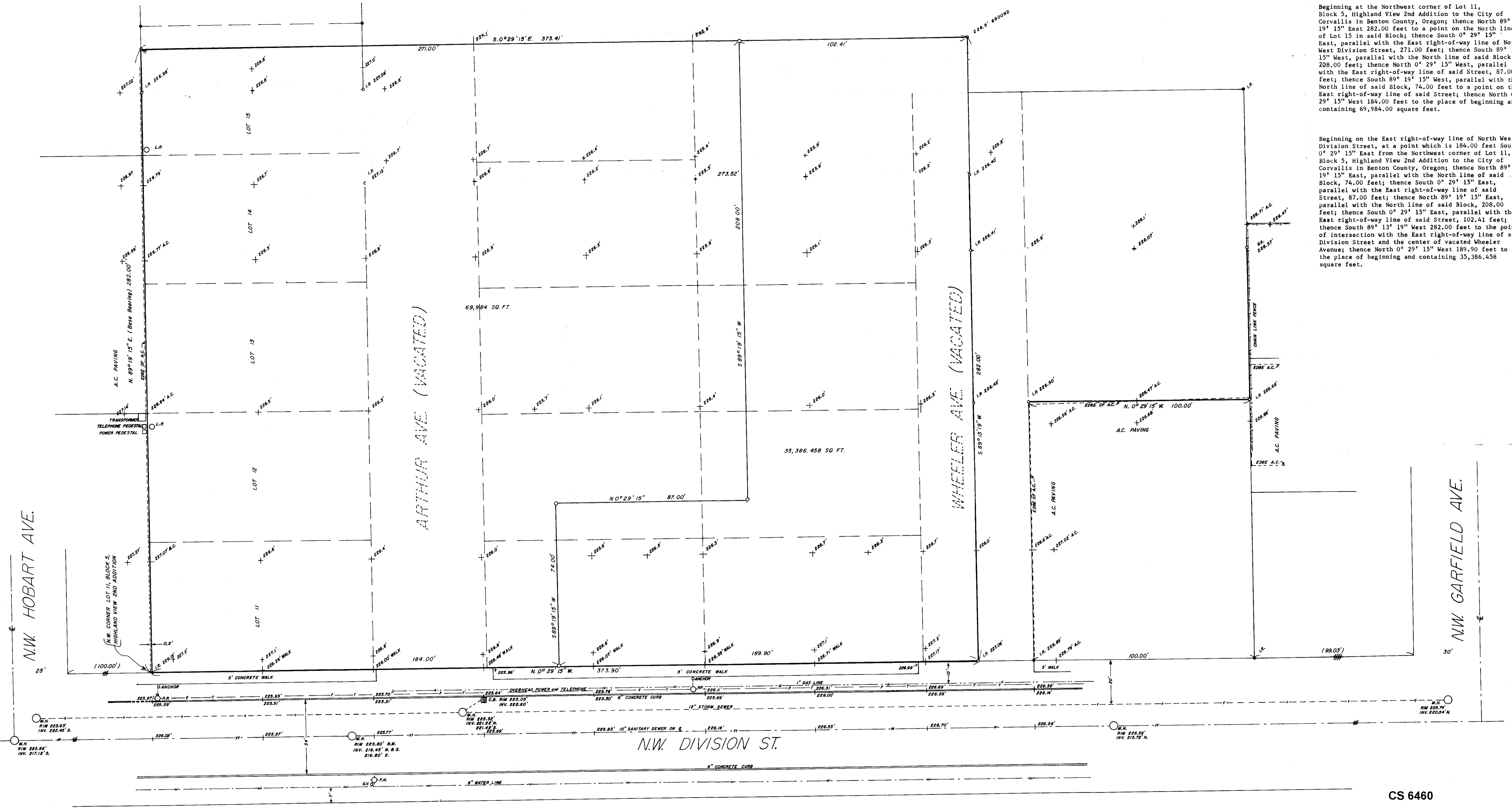


LEGAL DESCRIPTIONS

Beginning at the Northwest corner of Lot 11, Block 5, Highland View 2nd Addition to the City of Corvallis in Benton County, Oregon; thence North 89° 19' 15" East 282.00 feet to a point on the North line of Lot 15 in said Block; thence South 0° 29' 15" East, parallel with the East right-of-way line of North West Division Street, 271.00 feet; thence South 89° 19' 15" West, parallel with the North line of said Block, 208.00 feet; thence North 0° 29' 15" West, parallel with the East right-of-way line of said Street, 87.00 feet; thence South 89° 19' 15" West, parallel with the North line of said Block, 74.00 feet to a point on the East right-of-way line of said Street; thence North 0° 29' 15" West 184.00 feet to the place of beginning and containing 69,984.00 square feet.

Beginning on the East right-of-way line of North West Division Street, at a point which is 184.00 feet South 0° 29' 15" East from the Northwest corner of Lot 11, Block 5, Highland View 2nd Addition to the City of Corvallis in Benton County, Oregon; thence North 89° 19' 15" East, parallel with the North line of said Block, 74.00 feet; thence South 0° 29' 15" East, parallel with the East right-of-way line of said Street, 87.00 feet; thence North 89° 19' 15" East, parallel with the North line of said Block, 208.00 feet; thence South 0° 29' 15" East, parallel with the East right-of-way line of said Street, 102.41 feet; thence North 0° 29' 15" West 189.90 feet to the place of beginning and containing 35,386.458 square feet.



LEGAL DESCRIPTION

Beginning at the Northwest corner of Lot 11, Block 5, Highland View 2nd Addition to the City of Corvallis in Benton County, Oregon; thence North 89° 19' 15" East 282.00 feet to a point on the North line of Lot 15 in said Block; thence South 0° 29' 15" East, parallel with the East right-of-way line of N. W. Division Street, 373.41 feet to a point on the center of vacated Wheeler Avenue if extended; thence South 89° 13' 19" West 282.00 feet to the point of intersection with the East right-of-way line of said Northwest Division Street and the center of said vacated Wheeler Avenue; thence North 0° 29' 15" West 373.90 feet to the place of beginning and containing 105,370.458 square feet.

MINOR LAND PARTITION APPROVAL
Reed Burt 9/1/76
 CITY ENGINEER DATE
David L. Bascue 7/23/76
 PLANNING DIRECTOR DATE

- LEGEND
- STORM SEWER
 - WATER LINE
 - GAS LINE
 - OVERHEAD POWER and TELEPHONE
 - M.H. = MANHOLE
 - C.B. = CATCH BASIN
 - F.H. = FIRE HYDRANT
 - G.V. = GATE VALVE
 - R.P. = POWER POLE
 - L.P. = LIGHT POLE
- AREA OF TRACT = 2.4189 ACRES OF LAND

CS 6460

Benton Co. Surveyors Office
 C. S. FILE NO. 41-1111
 FILING DATE 9-7-77
 FILE SIZE 18-30

REGISTERED PROFESSIONAL LAND SURVEYOR
 DAVID L. BASCUE
 783

PREPARED FOR AND AT THE REQUEST OF
 HAMMOND DEVELOPEMENT CORP.
 LOCATION: BLOCK 5, HIGHLAND VIEW 2ND ADDITION and HIGHLAND VIEW 3RD ADDITION, CORVALLIS

NO. 75-12-409
 SCALE 1" = 20'
 DATE MAY 27, 1976

LIABILITY FOR THIS SURVEY IS EXPRESSLY LIMITED TO SAID PERSON OR PERSONS.

NO. 1/4 SEC. 26 T. 11 S. R. 5 W. W.M. BENTON COUNTY, OREGON

BARNES SURVEYING & ENGINEERING, INC.
 2565 STATE STREET SALEM, OREGON 97301 PHONE 581-0911
 DAVID L. BASCUE LAND SURVEYOR ELMER E. SEAY LAND PLANNER WILLIAM F. RINGNALDA REG. ENGINEER