

# HOBIN LUMBER COMPANY

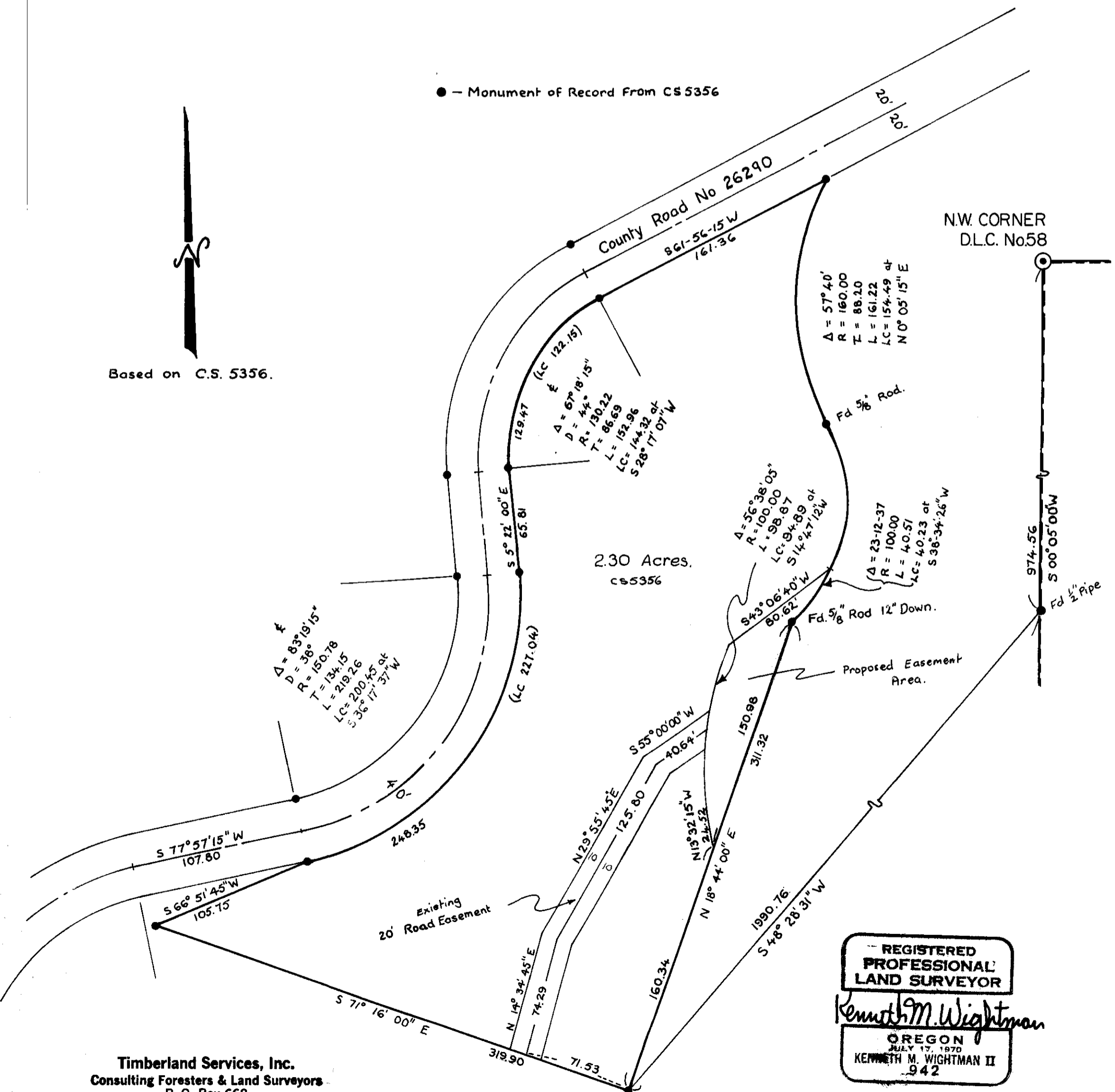
**Benton Co. Surveyors Office**  
 C. S. FILE NO. 06530  
 FILING DATE 1-13-78  
 FILE SIZE 18"

SW 1/4 SW 1/4 SECTION 22 & NW 1/4 NW 1/4 SECTION 27  
 T. 12 S., R. 6 W. WM.

Benton County, Oregon

SCALE: 1" = 60'

OCTOBER 20, 1977



Based on C.S. 5356.

**Timberland Services, Inc.**  
 Consulting Foresters & Land Surveyors  
 P. O. Box 668  
 ALBANY, OREGON 97321

**REGISTERED PROFESSIONAL LAND SURVEYOR**  
*Kenneth M. Wightman*  
**OREGON**  
 JULY 17, 1970  
 KENNETH M. WIGHTMAN II  
 942