

6571

Survey For TOM PATTERSON

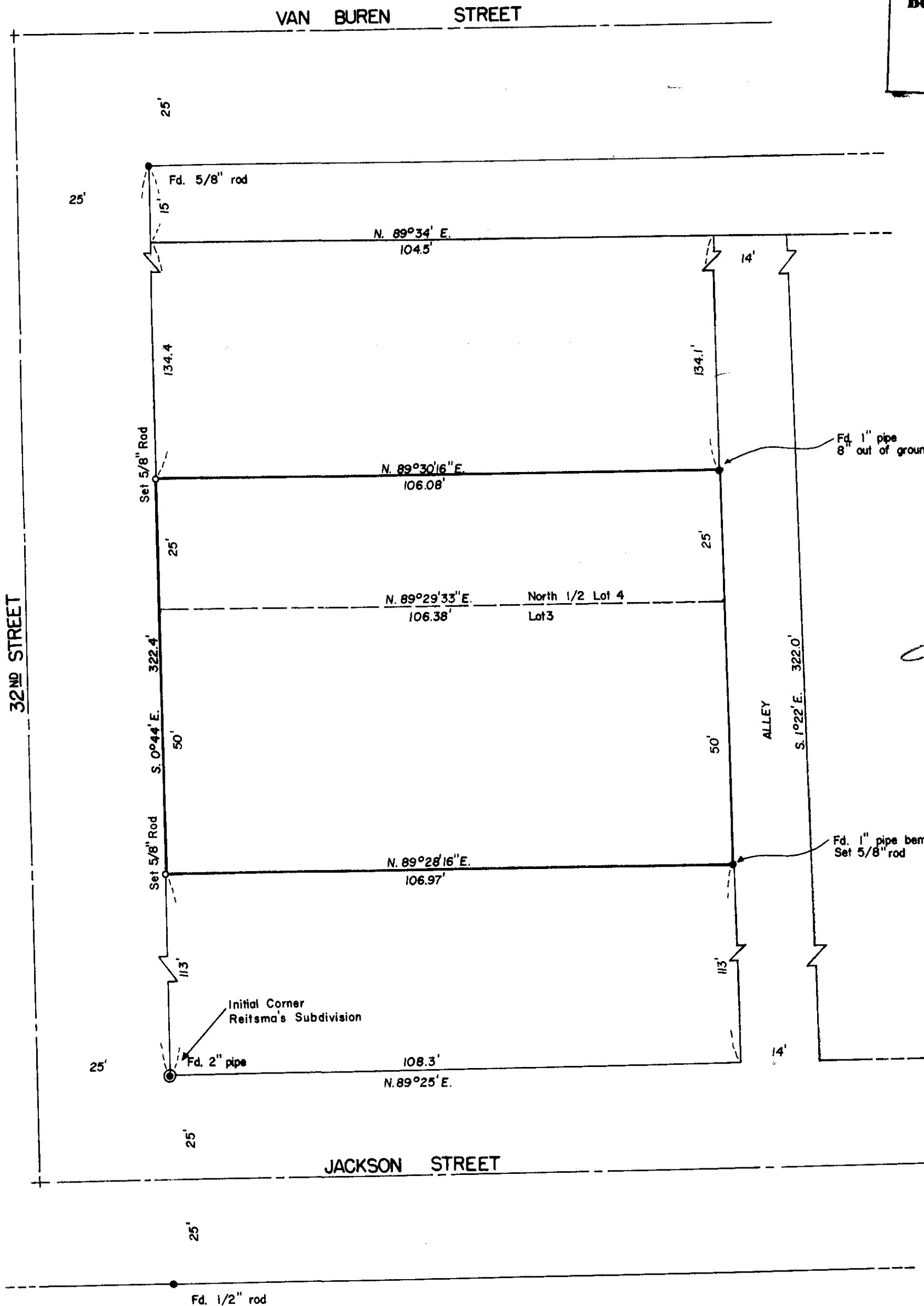
Lot 3 and the S. 1/2 Lot 4,
Reitsma's Subdivision of Lot 3, College Homes
In N.W. 1/4 Sec. 34, T. 11 S., R. 5 W. of W.M.
Corvallis, Benton County, Oregon

Scale 1"=20'
Job no. 77-315

November 7, 1977
Drawn by V.M.V.



Benton Co. Surveyors Office
C. S. FILE NO. 06571
FILING DATE 2-13-78
FILE SIZE 18"



REGISTERED
PROFESSIONAL
LAND SURVEYOR

Fred J. Lemke

OREGON
MAY 2, 1928
FRED J. LEMKE
443